

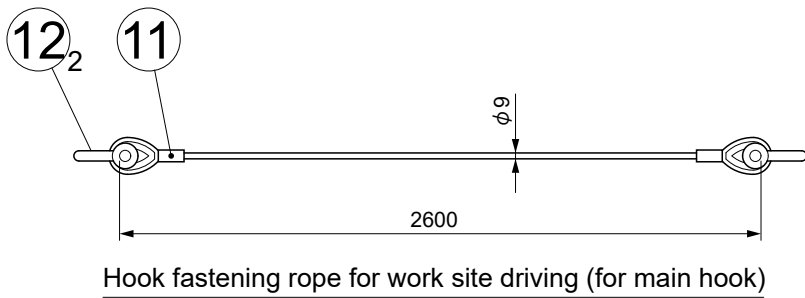
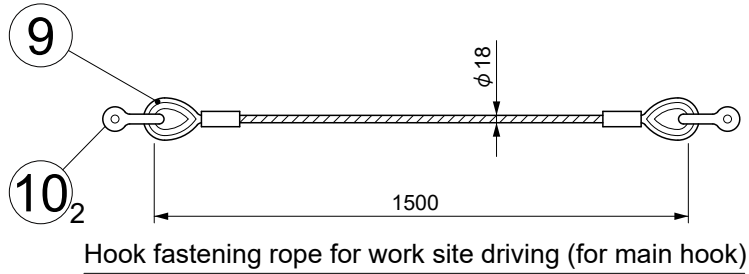
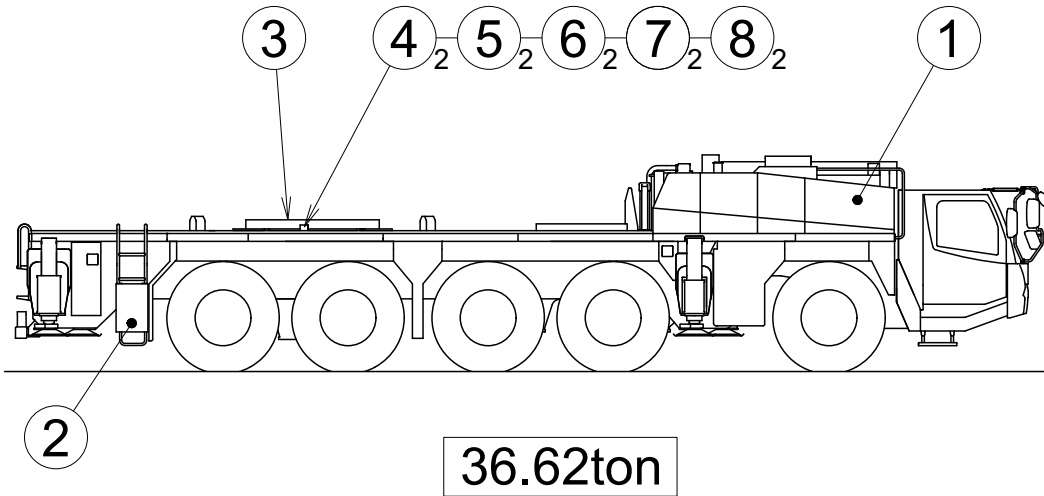


Decomposition transport list
Applicable Serial No.1051—

KA-1300RX

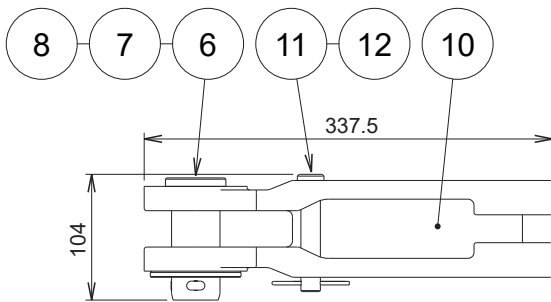
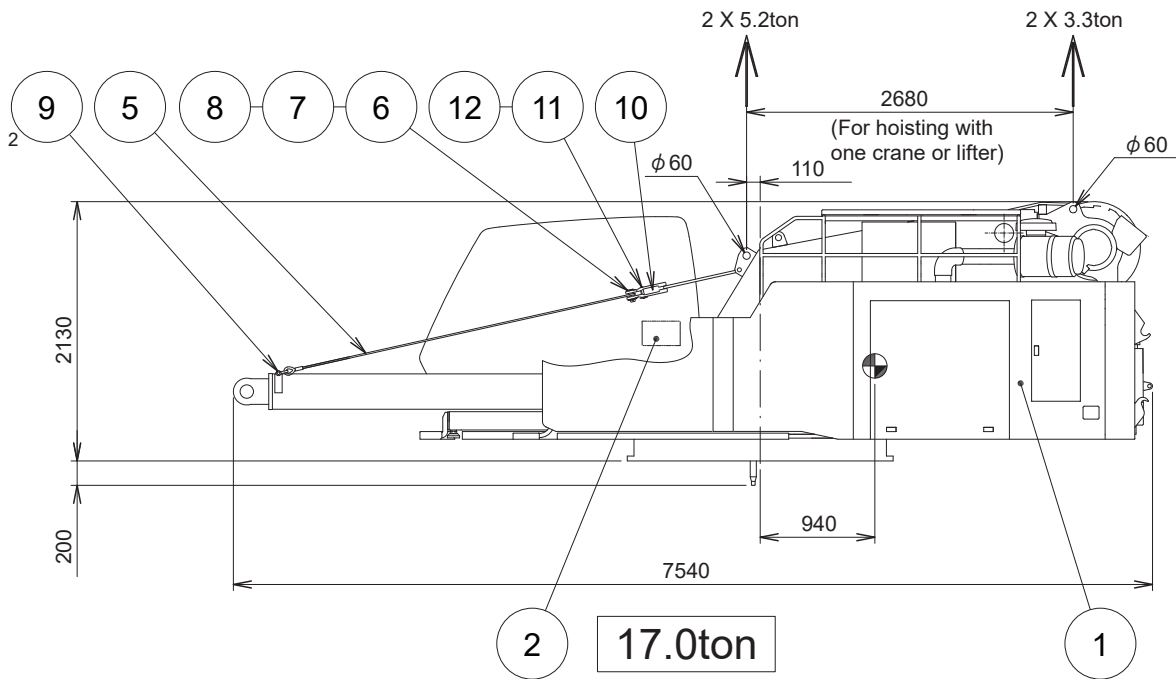
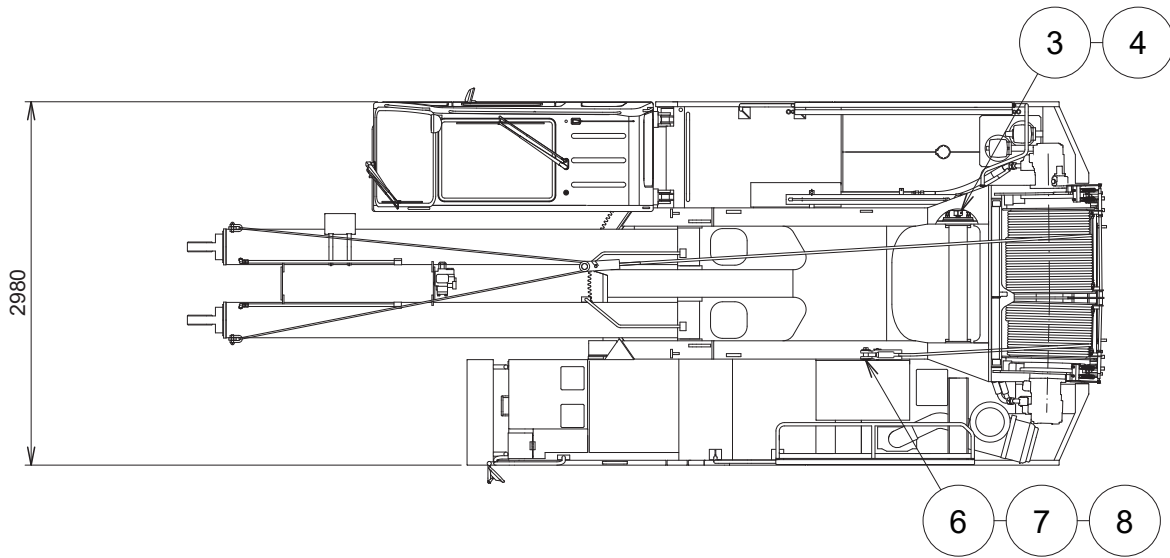
1. Carrier	9
2. Slewing upper structure	10
3. Counter weight	12
4. Boom	14
5. Hook	16
6. Overhoisting detector	17
7. Desmounting/remounting jigs	18
8. Tools (for crane).....	19

1. Carrier (951Q-0002-0E)

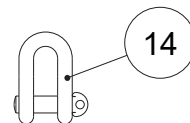
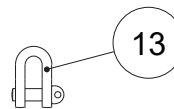


No.	Name	Q'ty	Note
1	Carrier	1	
2	Toolbox	1	
3	Cover	1	(821-20210001)
4	Ring	2	(821-20221000)
5	Bolt	2	M33 (821-20222000)
6	Bolt	2	M10 (001-10310045)
7	Spring washer	2	for M10 (001-12110002)
8	Nut	2	for M10 (001-13210000)
9	Wire rope	1	φ 18 X 1500 (741-84401000)
10	Shackle	2	for 6.5ton (721-84602000)
11	Wire rope	1	φ 19 X 2600 (721-84601000)
12	Shackle	2	for 1.5ton (001-50716000)

2. Slewing upper structure (951Q-0003-0E)



Rope socket



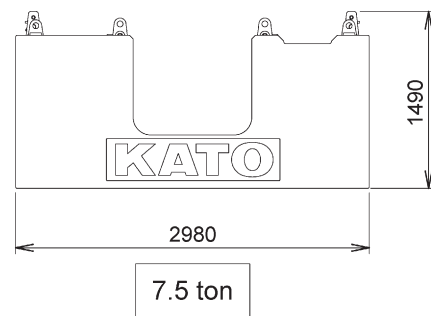
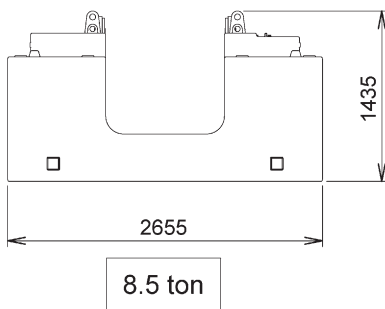
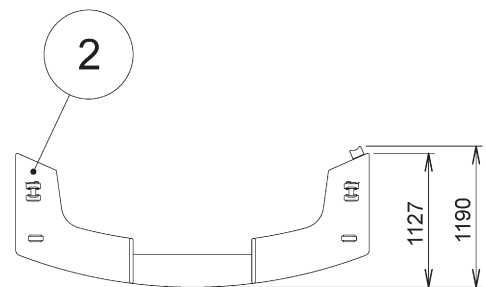
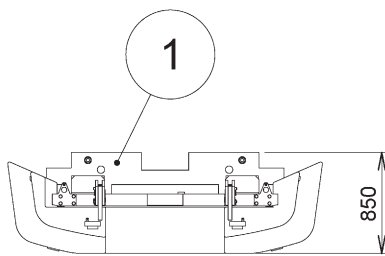
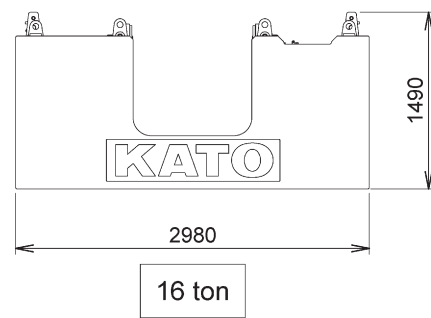
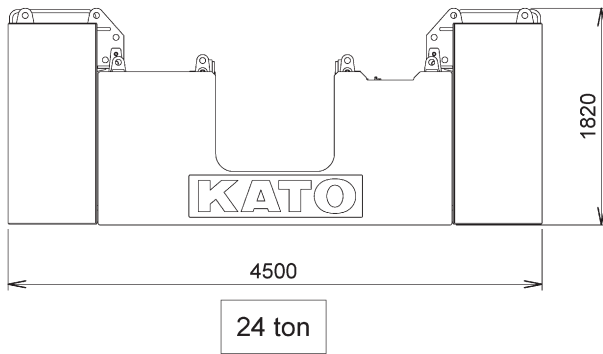
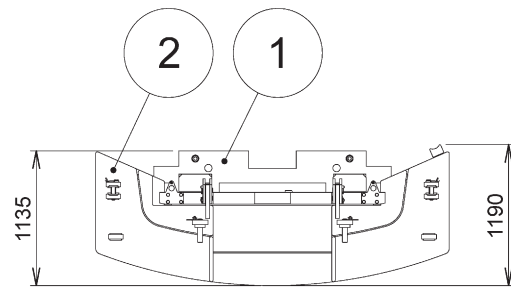
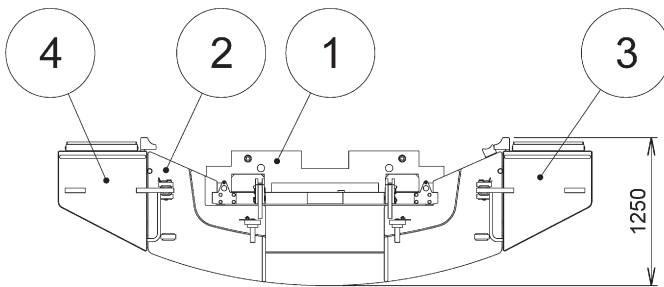
Shackle for fastening wire rope

I702012-002-0E

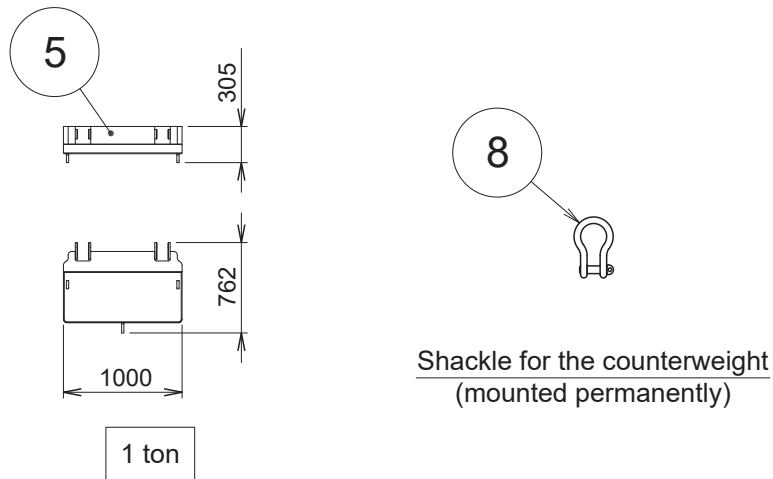
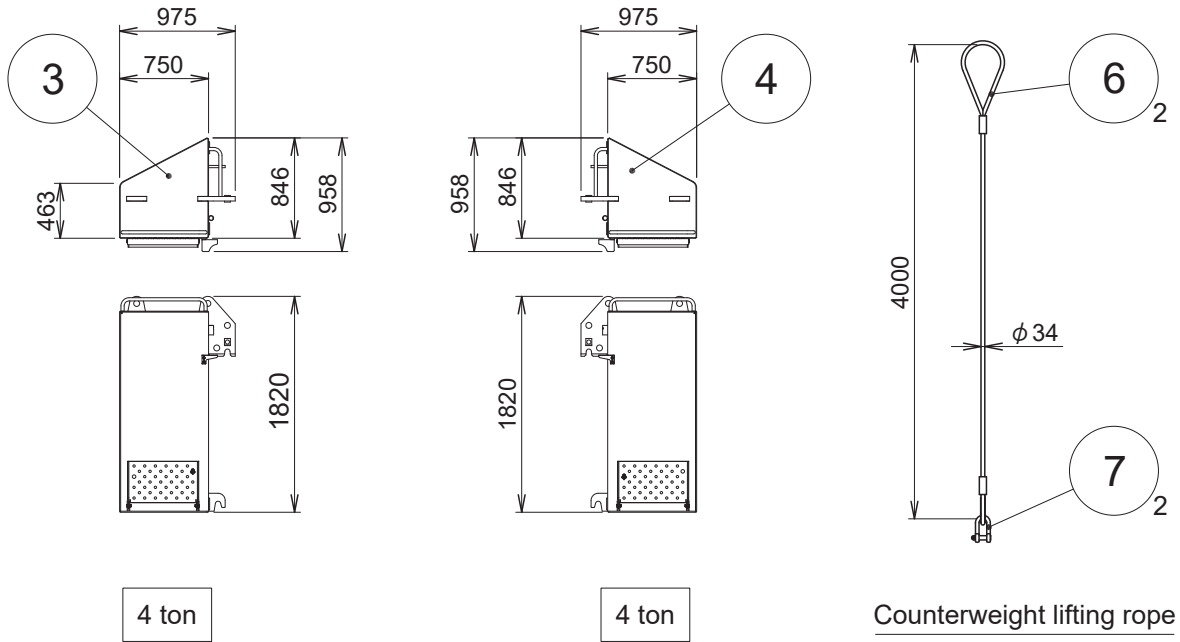
No.	Name	Q'ty	Note
1	Slewing upper structure	1	Including permanent weight
2	Name plate	1set	
3	Coupling	1	(592-40217011)
4	Pin	1	(592-40219001)
5	Wire rope	1	φ 12 X 6000 (752-35006001)
6	Pin	2	(302-41657003)
7	Washer	2	(302-41658001)
8	Split pin	2	(001-20208060)
9	Shackle	2	for 1.5ton (001-50716000)
10	Rope socket	2	(721-84103001)
11	Pin	2	(721-84104000)
12	Snap pin	2	(001-20416000)
13	Shackle	2	(001-50708000)
14	Shackle	2	(001-50712000)

I702012-008-0E

3. Counter weight (951Q-0004-0E)



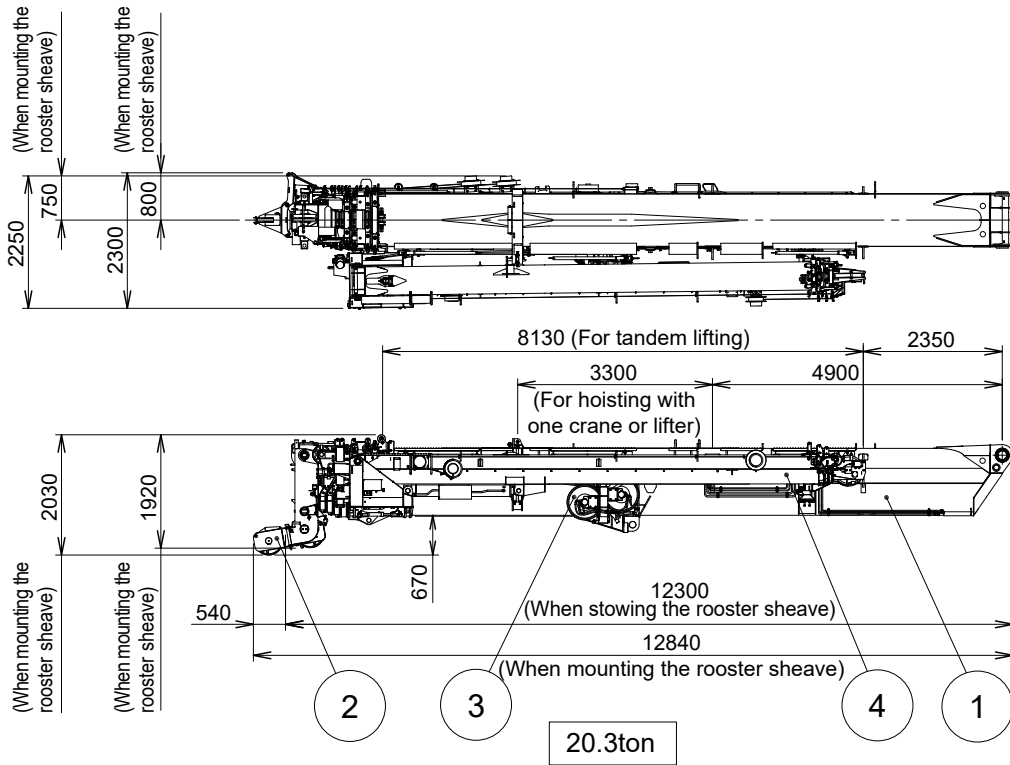
I217551-002-0J



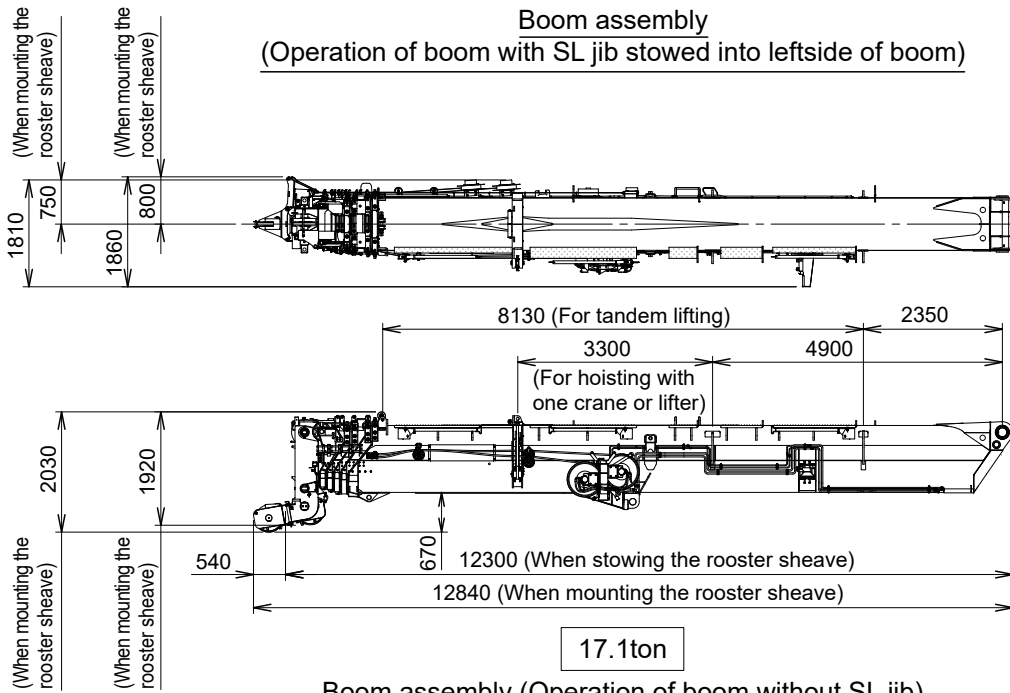
No.	Name	Q'ty	Note
1	Counterweight	1	8.5ton
2	Counterweight	1	7.5ton
3	Counterweight	1	4.0ton
4	Counterweight	1	4.0ton
5	Counterweight (mounted permanently)	1	1.0ton
6	Wire rope	2	(721-35210000)
7	Shackle	2	for 16ton (821-84310000)
8	Shackle	2	for 5ton (721-35113000)

I217551-067-1E

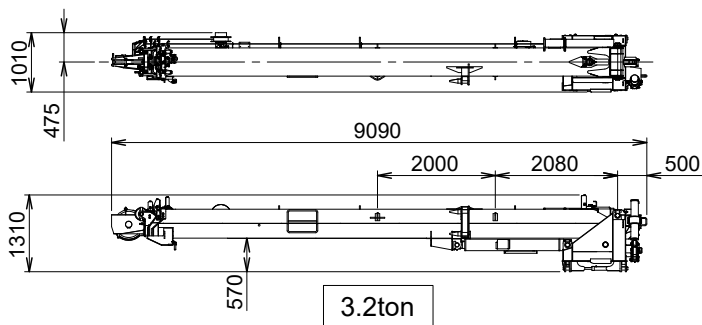
4. Boom (951Q-0005-0E)



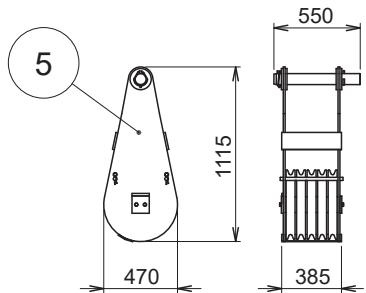
Boom assembly
 (Operation of boom with SL jib stowed into leftside of boom)



Boom assembly (Operation of boom without SL jib)

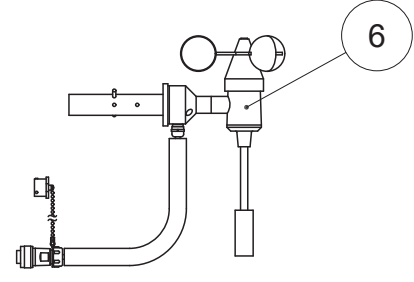


SL jib assembly

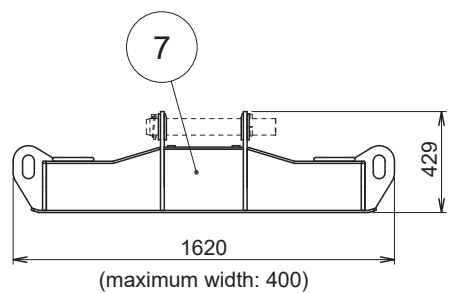


180kg

Sheave block

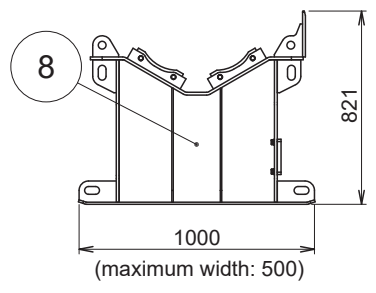


Anemometer



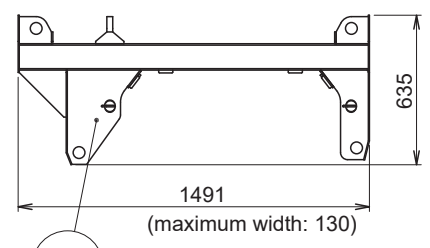
175kg

Stand for transporting the boom
(The pin is also used for the sheave block.)



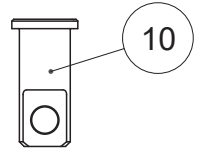
170kg

Stand for transporting the SL jib
(optional)

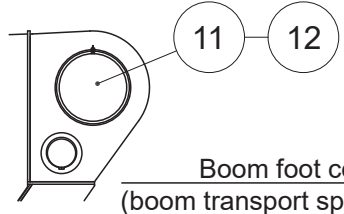


70kg

Fastening hanger for transporting the boom



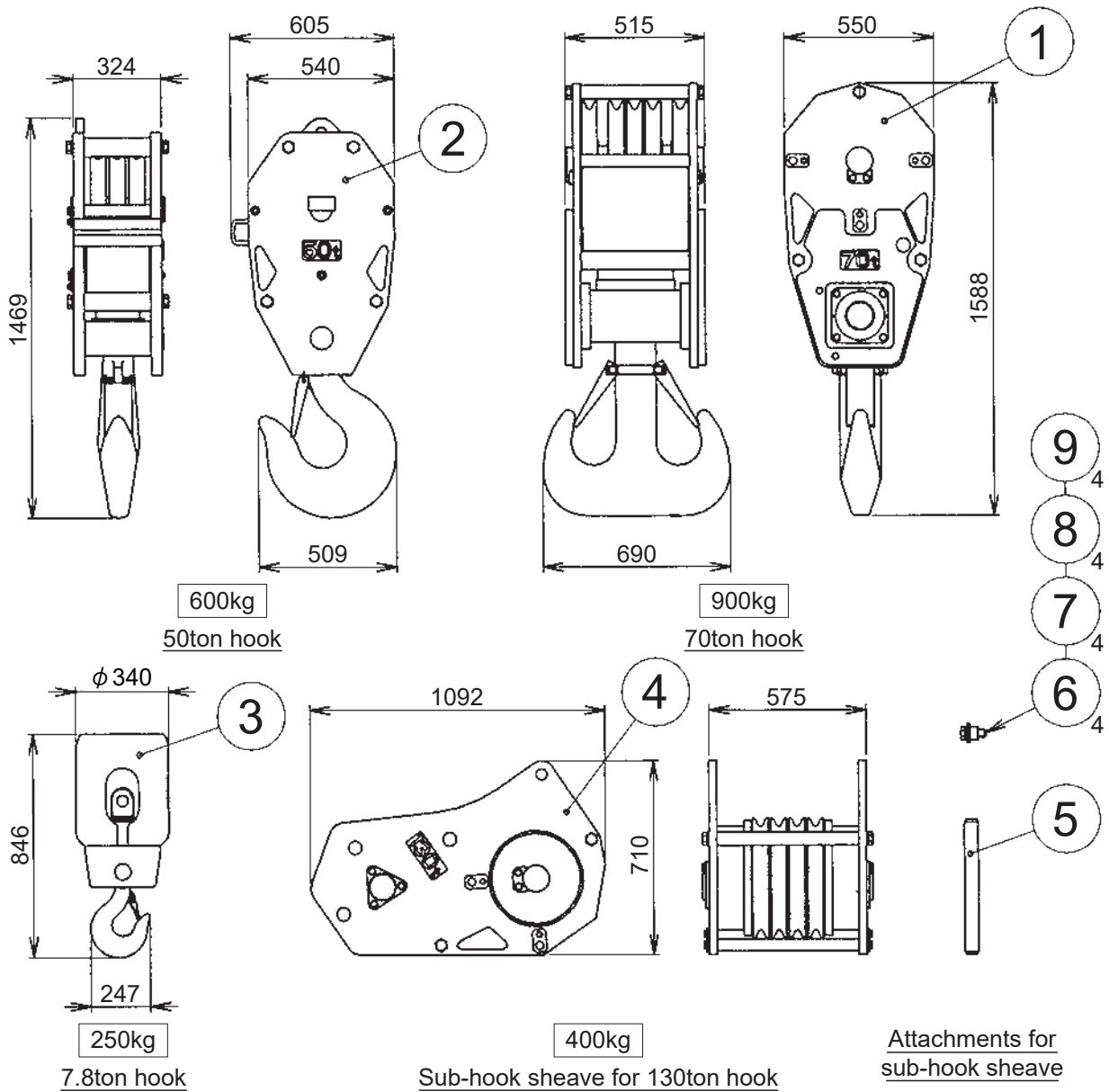
Fastening pin for transporting the boom



Boom foot cover
(boom transport specification)

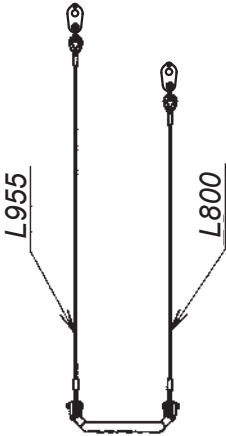
No.	Name	Q'ty	Note
1	Boom assembly	1	17.1ton — 20.3ton
2	Rooster sheave assembly	1	
3	Hose reel assembly	1	(150kg)
4	SL jib assembly	1	3.2ton
5	Sheave block assembly	1	(for heavy weight)
6	Anemometer assembly	1	(Used for both the boom and the SL jib)
7	Stand	1	(for boom)
8	Stand	1	(forSLjib)
9	Hanger assembly	1	
10	Pin	2	(821-49904000)
11	Cover	2	(821-48913001)
12	Wing bolt	2	(009-11306016)

5. Hook (951Q-0009-0E)



No.	Name	Q'ty	Note
1	Hook assembly	1	for 70ton
2	Hook assembly	1	for 50ton
3	Hook assembly	1	for 7.8ton
4	Sub-hook sheave assembly	1	for 130ton
5	Guide	1	(821-84511001)
6	End plate	4	(821-84510000)
7	Collar	4	(821-84512000)
8	Bolt	4	M27 (001-10327075)
9	Spring washer	4	for M27 (009-12127002)

6. Overhoisting detector (951Q-0010-0E)



1set (for boom)



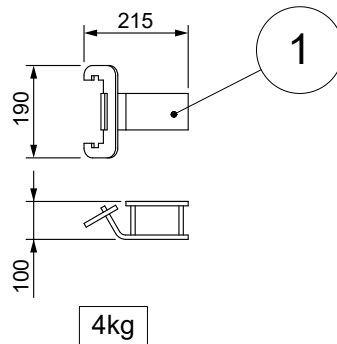
1set (for rooster sheave and SLjib)



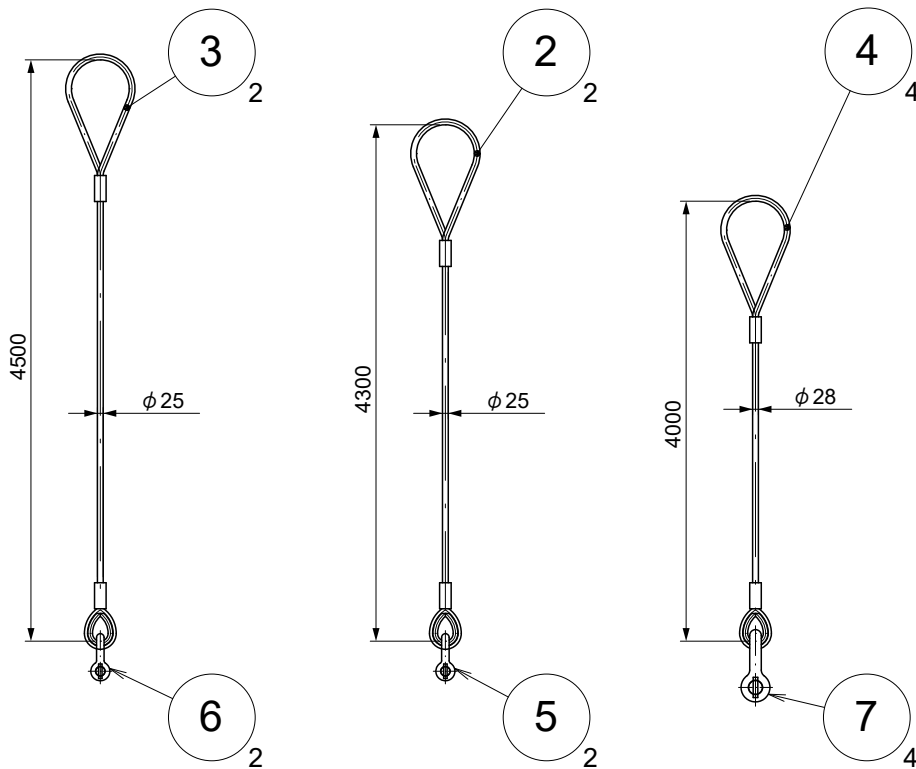
1set (for heavy weight)

I702012-006-0E

7. Desmounting/remounting jigs (T702011-003-0E)



Workbench for disassembly and assembly

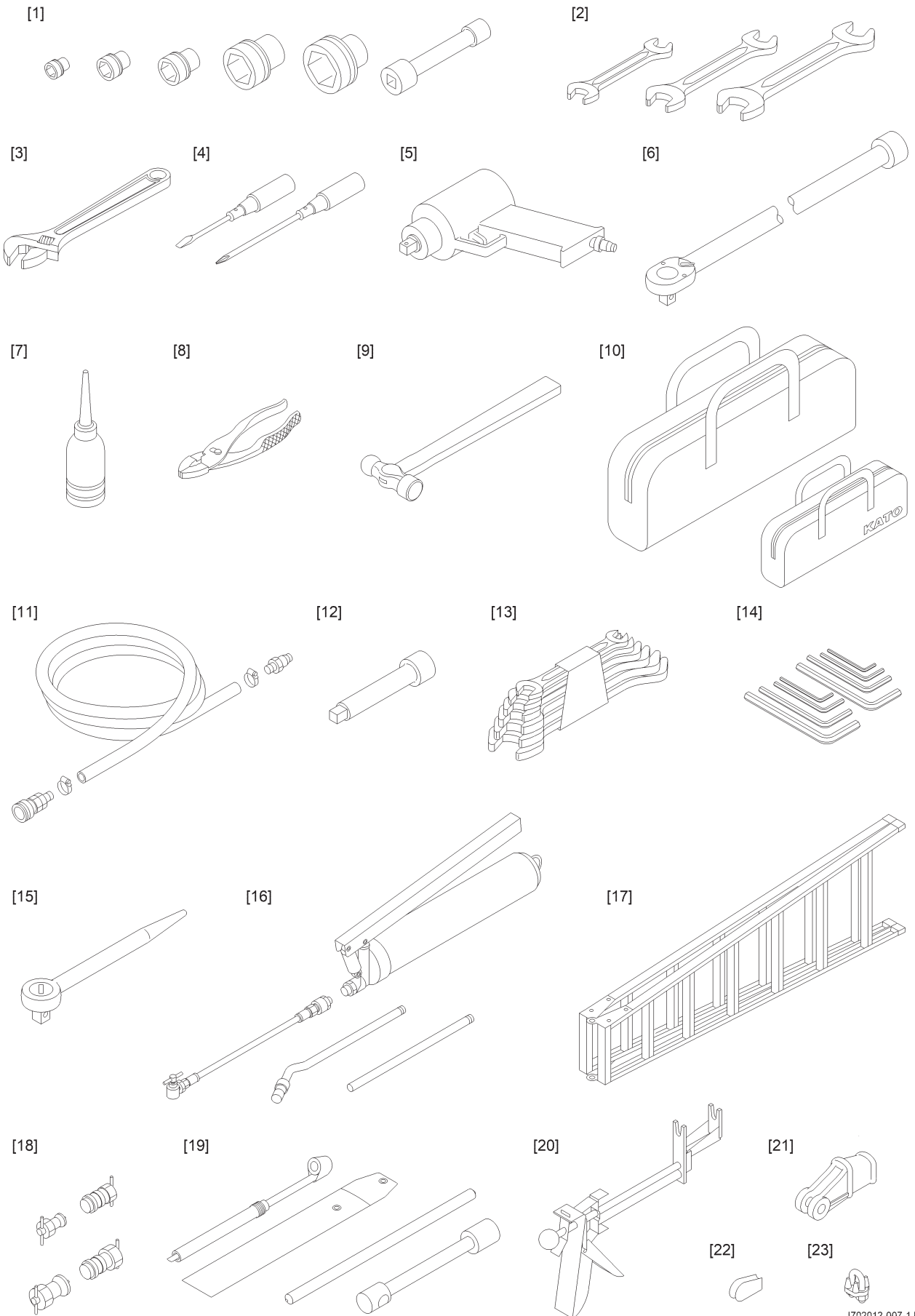


Wire rope for disassembling the crane in three sections (optional)

No.	Name	Q'ty	Note
1	Workbench for disassembly and assembly	2	
2	Wire rope	2	ϕ 25 X 4300 (821-84301010)
3	Wire rope	2	ϕ 25 X 4500 (821-84302010)
4	Wire rope	4	ϕ 28 X 4000 (821-84303010)
5	Shackle	2	for 4.2ton (821-84306000)
6	Shackle	2	for 5.4ton (821-84307000)
7	Shackle	4	for 10.0ton (971-89901001)

I217551-081-1E

8. Tools (for crane) (951Q-0011-0E)



I702012-007-1J

Tools

	Name	Qty	Note
1	Socket $\diamond 19 \times \square 3/4"$ 、 $\diamond 24 \times \square 3/4"$ 、 $\diamond 30 \times \square 3/4"$ 、 $\diamond 41 \times \square 3/4"$ 、 $\diamond 50 \times \square 3/4"$ 、 $\diamond 50 \times \square 3/4"$	1 for each. Total 6.	
2	Spanner set 50×46、41×36、30×27	1 for each. Total 3.	
3	Adjustable spanner	1	
4	Screwdriver +150、Screwdriver -100	1 for each. Total 2.	
5	Impact wrench	1	
6	Torque wrench	1	
7	Oil feeder	1	
8	Plier	1	
9	Hunmer 1Lb	1	
10	Tool bag	1 for each. Total 2.	
11	Air hose 20m male female	1	
12	Extension $\square 3/4"$ male× $\square 3/4"$ female	1	
13	Spanner set 8×10、11×13、12×14、14×17、17×19、22×24	1set	
14	Wrench set 3、4、5、6、8、10、12、14	1set	
15	Socket wrench 3/4"	1	
16	Grease gun	1	
17	Stepladder	1	
18	Coupling presser 3/4 1/2	1set	
19	Tire tools Steering wheel、Wheel nut socket、Air gauge	1 for each. Total 3.	
20	Coupling presser	1	
21	Rope socket	2	
22	Rope wedge	2	
23	Wire clip	2	

(T702012-002-0E)