

Boom Lifting Capacity Chart

[Working Ranges]

■ Boom Working Ranges (With Heavy Load Unit)	26
■ Boom Working Ranges	27

[Operation of boom with heavy load unit]

■ Specification BB1	28
---------------------------	----

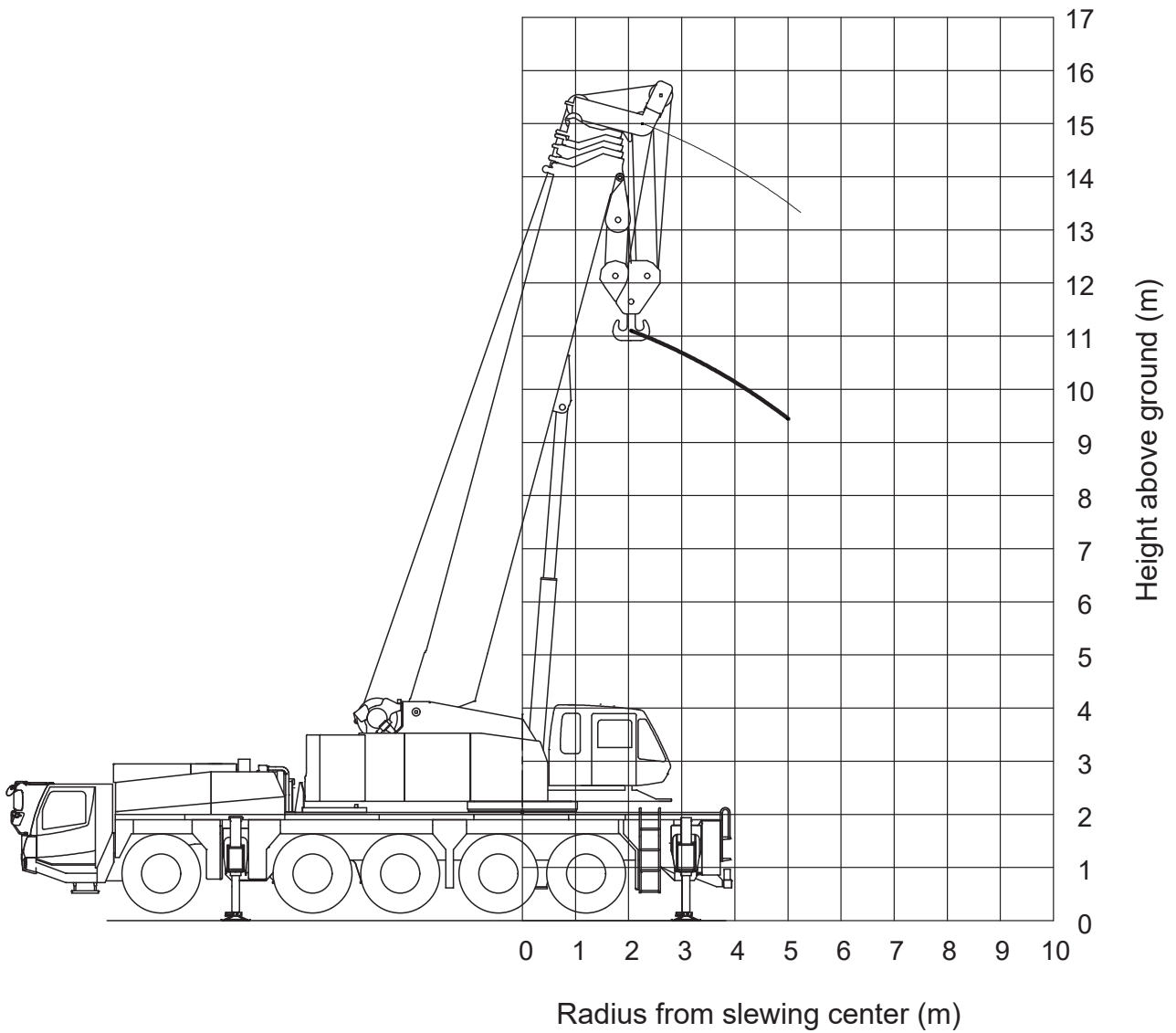
[Operation of boom with SL jib stowed into left side of boom]

■ Specification A	29
■ Specification B	33
■ Specification C	37
■ Specification D	40
■ Specification E	43

[Operation of boom without SL jib]

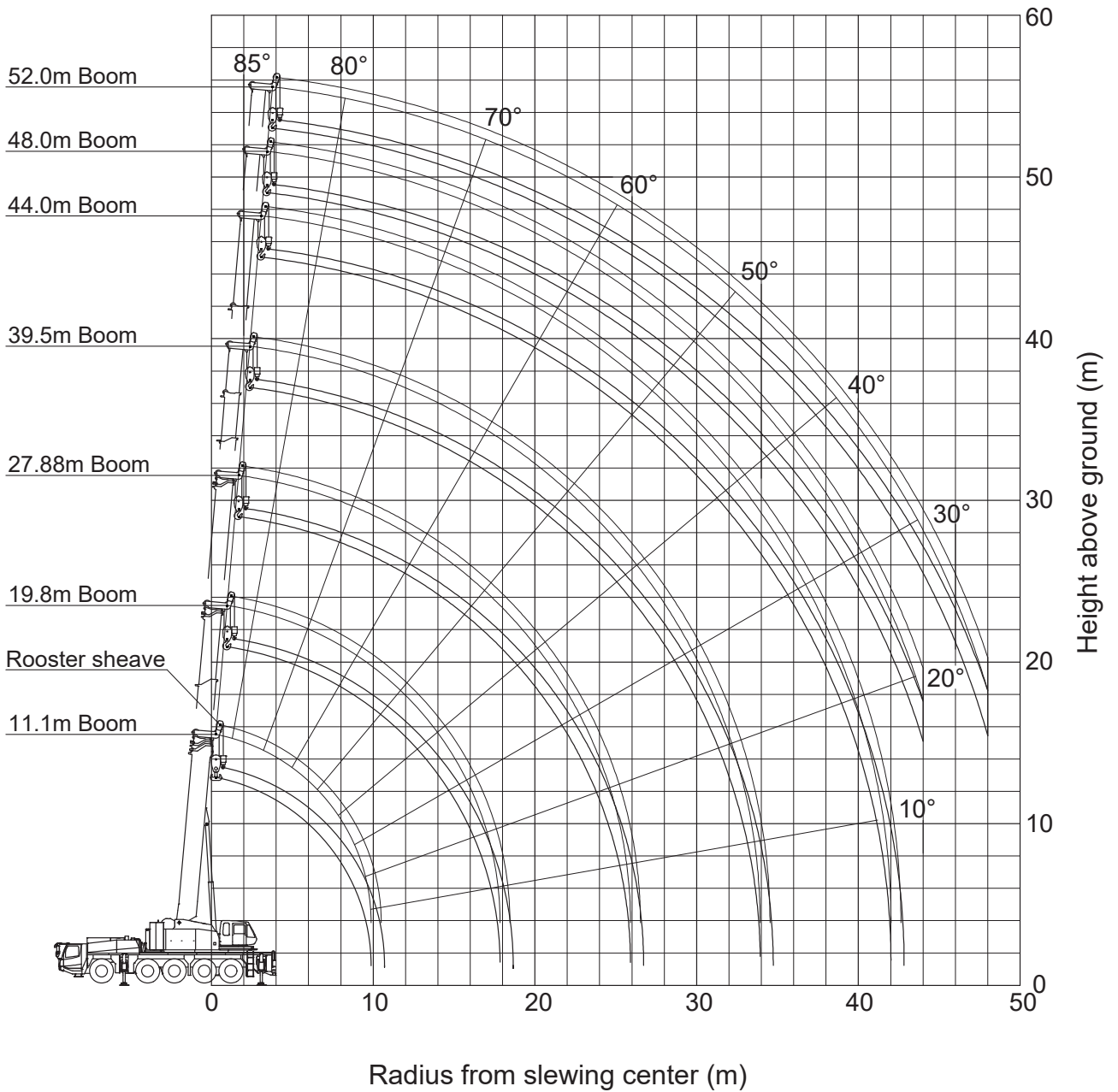
■ Specification NA	46
■ Specification NB	50
■ Specification NC	54
■ Specification ND	57
■ Specification NE	60

Boom Working Ranges (With Heavy Load Unit)



Notes: This diagram does not include deflection of Boom.

Boom Working Ranges



Notes:

1. This diagram does not include deflection of Boom.
2. This diagram is for specification A1(NA1).



Based on ISO 4305 / Not exceed 75% of static tipping loads

Outriggers fully extended (8.4m) 360° full range	
Specification BB1	
24ton or 16ton counterweight mounted to crane	
Working radius (m)	11.8m Boom Heavy Load Unit
2.5	130.0
3.0	120.0
3.5	110.0
4.0	101.0
4.5	89.0
5.0	79.5
Min, boom angle (°)	—
Standard hook	for 130 ton
Hook mass	1300kg
Parts of line	19

(Unit: Metric ton)



Based on ISO 4305 / Not exceed 75% of static tipping loads

Specification A1		Outriggers fully extended (8.4m) 360° full range, with 24ton counterweight mounted to crane					
Working radius (m)	11.8m Boom	19.8m Boom	27.88m Boom	35.9m Boom	44.0m Boom	48.0m Boom	52.0m Boom
2.5	70.0						
3.0	70.0	50.0					
3.5	70.0	50.0					
4.0	70.0	50.0	35.0				
4.5	70.0	50.0	35.0				
5.0	70.0	50.0	35.0	24.0			
6.0	65.7	50.0	35.0	24.0			
7.0	57.4	50.0	35.0	24.0	17.0	14.0	
8.0	49.0	49.0	35.0	24.0	17.0	14.0	12.0
9.0	42.5	42.5	35.0	24.0	17.0	14.0	12.0
10.0		37.2	33.7	24.0	17.0	14.0	12.0
12.0		29.4	27.8	23.2	17.0	14.0	12.0
14.0		23.7	23.4	20.7	15.8	14.0	12.0
16.0		19.3	19.4	18.4	14.0	14.0	12.0
18.0			15.6	16.3	12.6	13.1	12.0
20.0			12.7	14.2	11.5	11.7	11.0
22.0			10.2	12.0	10.5	10.4	9.8
24.0			8.3	10.0	9.6	9.3	8.8
26.0				8.4	8.9	8.4	7.9
28.0				7.0	8.1	7.6	7.1
30.0				5.8	6.9	6.9	6.5
32.0				4.8	5.9	6.3	5.9
34.0					5.0	5.4	5.3
36.0					4.2	4.6	4.9
38.0					3.5	3.9	4.2
40.0					2.9	3.3	3.6
42.0					1.4	2.8	3.1
44.0						2.3	2.6
46.0							2.1
48.0							1.7
Min, boom angle (°)	—	—	—	—	—	11	16
Standard hook	for 70 ton				for 50 ton		
Hook mass	900kg				600kg		
Parts of line	10	7	5	4			

(Unit: Metric ton)

A
B
C
D
E
Without SL jib
With SL jib

Specification A2							
Outriggers intermediately extended (7.4m) over side, with 24ton counterweight mounted to crane							
Working radius (m)	11.8m Boom	19.8m Boom	27.88m Boom	35.9m Boom	44.0m Boom	48.0m Boom	52.0m Boom
2.5	70.0						
3.0	70.0	50.0					
3.5	70.0	50.0					
4.0	70.0	50.0	35.0				
4.5	70.0	50.0	35.0				
5.0	70.0	50.0	35.0	24.0			
6.0	62.8	50.0	35.0	24.0			
7.0	54.9	50.0	35.0	24.0	17.0	14.0	
8.0	48.6	48.3	35.0	24.0	17.0	14.0	12.0
9.0	42.5	42.5	35.0	24.0	17.0	14.0	12.0
10.0		37.2	33.7	24.0	17.0	14.0	12.0
12.0		29.1	27.8	23.2	17.0	14.0	12.0
14.0		21.9	22.1	20.7	15.8	14.0	12.0
16.0		17.0	17.1	18.4	14.0	14.0	12.0
18.0			13.6	15.1	12.6	13.1	12.0
20.0			10.9	12.4	11.5	11.7	11.0
22.0			8.7	10.2	10.5	10.4	9.8
24.0			7.0	8.5	9.4	9.3	8.8
26.0				7.1	8.0	8.4	7.9
28.0				5.8	6.8	7.2	7.1
30.0				4.7	5.7	6.2	6.5
32.0				3.7	4.8	5.2	5.5
34.0					4.0	4.4	4.7
36.0					3.2	3.6	3.9
38.0					2.6	3.0	3.3
40.0					2.0	2.4	2.7
42.0					1.4	1.9	2.2
44.0						1.4	1.7
46.0							1.3
Min, boom angle (°)	—	—	—	—	—	20	25
Standard hook	for 70 ton				for 50 ton		
Hook mass	900kg				600kg		
Parts of line	10	7	5			4	

(Unit: Metric ton)



Specification A3		Outriggers intermediately extended (6.4m) over side, with 24ton counterweight mounted to crane					
Working radius (m)	11.8m Boom	19.8m Boom	27.88m Boom	35.9m Boom	44.0m Boom	48.0m Boom	52.0m Boom
2.5	70.0						
3.0	70.0	50.0					
3.5	70.0	50.0					
4.0	70.0	50.0	35.0				
4.5	70.0	50.0	35.0				
5.0	69.0	50.0	35.0	24.0			
6.0	59.3	50.0	35.0	24.0			
7.0	51.7	50.0	35.0	24.0	17.0	14.0	
8.0	45.6	45.3	35.0	24.0	17.0	14.0	12.0
9.0	39.8	39.8	35.0	24.0	17.0	14.0	12.0
10.0		32.8	33.2	24.0	17.0	14.0	12.0
12.0		23.5	23.8	23.2	17.0	14.0	12.0
14.0		17.6	17.8	19.4	15.8	14.0	12.0
16.0		13.6	13.7	15.3	14.0	14.0	12.0
18.0			10.7	12.2	12.6	13.1	12.0
20.0			8.5	9.9	10.9	11.3	11.0
22.0			6.7	8.1	9.0	9.5	9.7
24.0			5.0	6.5	7.5	8.0	8.2
26.0				5.2	6.3	6.7	7.0
28.0				4.1	5.1	5.6	5.9
30.0				3.2	4.2	4.6	4.9
32.0				2.3	3.4	3.8	4.1
34.0					2.6	3.1	3.3
36.0					2.0	2.4	2.7
38.0					1.4	1.8	2.1
40.0						1.3	1.6
42.0							1.1
Min, boom angle (°)	—	—	—	—	27	31	35
Standard hook	for 70 ton				for 50 ton		
Hook mass	900kg				600kg		
Parts of line	10	7	5			4	

(Unit: Metric ton)

Specification A4		Outriggers intermediately extended (5.4m) over side, with 24ton counterweight mounted to crane					
Working radius (m)	11.8m Boom	19.8m Boom	27.88m Boom	35.9m Boom	44.0m Boom	48.0m Boom	52.0m Boom
2.5	70.0						
3.0	70.0	50.0					
3.5	70.0	50.0					
4.0	70.0	50.0	35.0				
4.5	70.0	50.0	35.0				
5.0	64.6	50.0	35.0	24.0			
6.0	55.2	50.0	35.0	24.0			
7.0	46.1	46.2	35.0	24.0	17.0	14.0	
8.0	36.0	36.1	35.0	24.0	17.0	14.0	12.0
9.0	29.2	29.2	29.6	24.0	17.0	14.0	12.0
10.0		24.1	24.5	24.0	17.0	14.0	12.0
12.0		17.3	17.5	19.0	17.0	14.0	12.0
14.0		12.9	13.1	14.5	15.4	14.0	12.0
16.0		9.8	9.9	11.3	12.2	12.6	12.0
18.0			7.6	9.0	9.8	10.2	10.5
20.0			5.8	7.1	8.0	8.4	8.6
22.0			4.4	5.7	6.5	6.9	7.1
24.0			2.9	4.5	5.3	5.7	6.0
26.0				3.5	4.4	4.7	5.0
28.0				2.5	3.5	3.9	4.1
30.0				1.6	2.7	3.1	3.4
32.0					1.9	2.4	2.7
34.0					1.3	1.7	2.1
36.0						1.1	1.4
Min, boom angle (°)	—	—	—	30	37	40	45
Standard hook	for 70 ton				for 50 ton		
Hook mass	900kg				600kg		
Parts of line	10	7	5			4	

(Unit: Metric ton)

A

B

C

D

E

Without SL jib
With SL jib

Specification A5							
Outriggers intermediately extended (4.4m) over side, with 24ton counterweight mounted to crane							
Working radius (m)	11.8m Boom	19.8m Boom	27.88m Boom	35.9m Boom	44.0m Boom	48.0m Boom	52.0m Boom
2.5	70.0						
3.0	70.0	50.0					
3.5	70.0	50.0					
4.0	70.0	50.0	35.0				
4.5	64.8	50.0	35.0				
5.0	59.2	50.0	35.0	24.0			
6.0	45.7	45.7	35.0	24.0			
7.0	34.7	34.6	35.0	24.0	17.0	14.0	
8.0	27.4	27.4	27.8	24.0	17.0	14.0	12.0
9.0	22.3	22.2	22.6	24.0	17.0	14.0	12.0
10.0		18.4	18.7	20.2	17.0	14.0	12.0
12.0		13.1	13.3	14.7	15.6	14.0	12.0
14.0		9.6	9.7	11.1	12.0	12.5	12.0
16.0		7.1	7.2	8.5	9.4	9.8	10.1
18.0			5.3	6.6	7.4	7.8	8.1
20.0			3.7	5.1	5.9	6.3	6.5
22.0			2.1	3.9	4.7	5.1	5.3
24.0				2.7	3.7	4.1	4.3
26.0				1.7	2.8	3.2	3.5
28.0					1.9	2.4	2.7
30.0					1.1	1.6	2.0
32.0							1.3
Min. boom angle (°)	—	—	34	41	45	50	52
Standard hook	for 70 ton			for 50 ton			
Hook mass	900kg			600kg			
Parts of line	10	7	5	4			

(Unit: Metric ton)



Based on ISO 4305 / Not exceed 75% of static tipping loads

Specification B1		Outriggers fully extended (8.4m) 360° full range, with 16ton counterweight mounted to crane					
Working radius (m)	11.8m Boom	19.8m Boom	27.88m Boom	35.9m Boom	44.0m Boom	48.0m Boom	52.0m Boom
2.5	70.0						
3.0	70.0	50.0					
3.5	70.0	50.0					
4.0	70.0	50.0	35.0				
4.5	70.0	50.0	35.0				
5.0	70.0	50.0	35.0	24.0			
6.0	64.5	50.0	35.0	24.0			
7.0	54.0	50.0	35.0	24.0	17.0	14.0	
8.0	46.0	46.0	35.0	24.0	17.0	14.0	12.0
9.0	40.0	40.0	35.0	24.0	17.0	14.0	12.0
10.0		35.5	33.7	24.0	17.0	14.0	12.0
12.0		27.6	27.6	23.2	17.0	14.0	12.0
14.0		21.0	20.9	20.7	15.8	14.0	12.0
16.0		16.4	16.3	18.0	14.0	14.0	12.0
18.0			13.0	14.6	12.6	13.1	12.0
20.0			10.3	12.0	11.5	11.7	11.0
22.0			8.1	9.9	10.5	10.4	9.8
24.0			6.4	8.1	9.2	9.3	8.8
26.0				6.7	7.7	8.1	7.9
28.0				5.4	6.5	6.8	7.1
30.0				4.4	5.4	5.8	6.1
32.0				3.5	4.5	4.9	5.2
34.0					3.7	4.1	4.4
36.0					3.1	3.4	3.7
38.0					2.5	2.8	3.1
40.0					1.9	2.3	2.5
42.0					1.4	1.8	2.1
44.0						1.3	1.6
46.0							1.1
Min. boom angle (°)	—	—	—	—	—	16	22
Standard hook	for 70 ton				for 50 ton		
Hook mass	900kg				600kg		
Parts of line	10	7	5			4	

(Unit: Metric ton)

A
B
C
D
E
Without SL jib
With SL jib

Specification B2							
Outriggers intermediately extended (7.4m) over side, with 16ton counterweight mounted to crane							
Working radius (m)	11.8m Boom	19.8m Boom	27.88m Boom	35.9m Boom	44.0m Boom	48.0m Boom	52.0m Boom
2.5	70.0						
3.0	70.0	50.0					
3.5	70.0	50.0					
4.0	70.0	50.0	35.0				
4.5	70.0	50.0	35.0				
5.0	70.0	50.0	35.0	24.0			
6.0	62.2	50.0	35.0	24.0			
7.0	54.0	50.0	35.0	24.0	17.0	14.0	
8.0	46.0	46.0	35.0	24.0	17.0	14.0	12.0
9.0	40.0	40.0	35.0	24.0	17.0	14.0	12.0
10.0		34.7	33.7	24.0	17.0	14.0	12.0
12.0		24.5	24.4	23.2	17.0	14.0	12.0
14.0		18.2	18.1	19.9	15.8	14.0	12.0
16.0		13.9	13.8	15.5	14.0	14.0	12.0
18.0			10.8	12.4	12.6	13.1	12.0
20.0			8.4	10.0	10.9	11.3	11.0
22.0			6.5	8.2	9.1	9.4	9.6
24.0			4.9	6.6	7.5	7.9	8.1
26.0				5.3	6.3	6.6	6.9
28.0				4.2	5.2	5.5	5.8
30.0				3.2	4.2	4.6	4.9
32.0				2.3	3.4	3.7	4.0
34.0					2.7	3.0	3.3
36.0					2.0	2.4	2.7
38.0					1.3	1.7	2.1
40.0						1.2	1.5
42.0							1.0
Min, boom angle (°)	—	—	—	—	24	30	35
Standard hook	for 70 ton			for 50 ton			
Hook mass	900kg			600kg			
Parts of line	10	7	5	4			

(Unit: Metric ton)



Based on ISO 4305 / Not exceed 75% of static tipping loads

Specification B3							
Outriggers intermediately extended (6.4m) over side, with 16ton counterweight mounted to crane							
Working radius (m)	11.8m Boom	19.8m Boom	27.88m Boom	35.9m Boom	44.0m Boom	48.0m Boom	52.0m Boom
2.5	70.0						
3.0	70.0	50.0					
3.5	70.0	50.0					
4.0	70.0	50.0	35.0				
4.5	70.0	50.0	35.0				
5.0	68.2	50.0	35.0	24.0			
6.0	58.5	50.0	35.0	24.0			
7.0	50.9	50.0	35.0	24.0	17.0	14.0	
8.0	42.3	42.2	35.0	24.0	17.0	14.0	12.0
9.0	33.8	33.6	33.6	24.0	17.0	14.0	12.0
10.0		27.5	27.5	24.0	17.0	14.0	12.0
12.0		19.4	19.4	21.3	17.0	14.0	12.0
14.0		14.4	14.3	16.0	15.8	14.0	12.0
16.0		10.9	10.8	12.4	13.4	13.7	12.0
18.0			8.2	9.8	10.7	11.1	11.3
20.0			6.1	7.8	8.7	9.0	9.3
22.0			4.4	6.2	7.1	7.4	7.7
24.0			3.0	4.8	5.8	6.1	6.4
26.0				3.6	4.6	5.0	5.3
28.0				2.6	3.6	4.0	4.3
30.0				1.7	2.8	3.2	3.4
32.0					2.0	2.4	2.7
34.0					1.3	1.7	2.1
36.0						1.1	1.4
Min, boom angle (°)	—	—	—	23	36	39	43
Standard hook	for 70 ton	for 50 ton					
Hook mass	900kg	600kg					
Parts of line	10	7	5	4			

(Unit: Metric ton)

Specification B4							
Outriggers intermediately extended (5.4m) over side, with 16ton counterweight mounted to crane							
Working radius (m)	11.8m Boom	19.8m Boom	27.88m Boom	35.9m Boom	44.0m Boom	48.0m Boom	52.0m Boom
2.5	70.0						
3.0	70.0	50.0					
3.5	70.0	50.0					
4.0	70.0	50.0	35.0				
4.5	69.3	50.0	35.0				
5.0	63.6	50.0	35.0	24.0			
6.0	52.7	50.0	35.0	24.0			
7.0	38.9	38.8	35.0	24.0	17.0	14.0	
8.0	30.3	30.1	30.2	24.0	17.0	14.0	12.0
9.0	24.4	24.2	24.2	24.0	17.0	14.0	12.0
10.0		19.9	19.9	21.7	17.0	14.0	12.0
12.0		14.0	14.0	15.6	16.5	14.0	12.0
14.0		10.2	10.2	11.7	12.6	12.9	12.0
16.0		7.6	7.5	9.0	9.8	10.1	10.3
18.0			5.5	6.9	7.7	8.0	8.3
20.0			3.9	5.4	6.2	6.5	6.7
22.0			2.4	4.1	4.9	5.2	5.4
24.0			1.1	3.0	3.9	4.2	4.4
26.0				1.9	3.0	3.3	3.6
28.0				1.0	2.1	2.5	2.8
30.0					1.3	1.7	2.0
32.0						1.0	1.4
Min, boom angle (°)	—	—	24	36	44	48	51
Standard hook	for 70 ton	for 50 ton					
Hook mass	900kg	600kg					
Parts of line	10	7	5	4			

(Unit: Metric ton)

A
B
C
D
E

Without SL jib
With SL jib

Specification B5							
Outriggers intermediately extended (4.4m) over side, with 16ton counterweight mounted to crane							
Working radius (m)	11.8m Boom	19.8m Boom	27.88m Boom	35.9m Boom	44.0m Boom	48.0m Boom	52.0m Boom
2.5	70.0						
3.0	70.0	50.0					
3.5	70.0	50.0					
4.0	69.8	50.0	35.0				
4.5	63.4	50.0	35.0				
5.0	54.1	50.0	35.0	24.0			
6.0	38.2	38.0	35.0	24.0			
7.0	28.8	28.6	28.6	24.0	17.0	14.0	
8.0	22.6	22.4	22.4	24.0	17.0	14.0	12.0
9.0	18.3	18.0	18.0	19.8	17.0	14.0	12.0
10.0		14.8	14.7	16.4	17.0	14.0	12.0
12.0		10.3	10.2	11.8	12.6	13.0	12.0
14.0		7.3	7.2	8.7	9.5	9.8	10.1
16.0		5.1	5.0	6.5	7.3	7.6	7.8
18.0			3.2	4.8	5.6	5.9	6.1
20.0			1.6	3.5	4.3	4.6	4.8
22.0				2.2	3.3	3.6	3.8
24.0				1.1	2.2	2.6	2.9
26.0						1.7	2.0
Min, boom angle (°)	—	—	38	47	54	57	60
Standard hook	for 70 ton				for 50 ton		
Hook mass	900kg				600kg		
Parts of line	10	7	5			4	

(Unit: Metric ton)

Specification B6							
With retracted outriggers (3.4m) over side, with 16ton counterweight mounted to crane							
Working radius (m)	11.8m Boom	19.8m Boom	27.88m Boom	35.9m Boom	44.0m Boom	48.0m Boom	52.0m Boom
2.5	70.0						
3.0	70.0	50.0					
3.5	68.8	50.0					
4.0	52.7	50.0	35.0				
4.5	42.2	42.1	35.0				
5.0	34.9	34.7	34.9	24.0			
6.0	25.3	25.1	25.2	24.0			
7.0	19.3	19.1	19.1	20.8	17.0	14.0	
8.0	15.2	15.0	15.0	16.6	17.0	14.0	12.0
9.0	12.2	12.0	12.0	13.5	14.3	14.0	12.0
10.0		9.7	9.7	11.1	11.9	12.2	12.0
12.0		6.5	6.4	7.8	8.6	8.8	9.1
14.0		4.3	4.2	5.5	6.3	6.5	6.8
16.0		2.5	2.4	3.9	4.6	4.9	5.1
18.0				2.6	3.4	3.6	3.8
20.0						2.7	2.9
Min, boom angle (°)	—	—	51	58	63	65	67
Standard hook	for 70 ton				for 50 ton		
Hook mass	900kg				600kg		
Parts of line	10	7	5			4	

(Unit: Metric ton)



Based on ISO 4305 / Not exceed 75% of static tipping loads

Specification C1		Outriggers fully extended (8.4m) 360° full range, with 8.5ton counterweight mounted to crane					
Working radius (m)	11.8m Boom	19.8m Boom	27.88m Boom	35.9m Boom	44.0m Boom	48.0m Boom	52.0m Boom
2.5	70.0						
3.0	70.0	50.0					
3.5	70.0	50.0					
4.0	70.0	50.0	35.0				
4.5	70.0	50.0	35.0				
5.0	70.0	50.0	35.0	24.0			
6.0	61.7	50.0	35.0	24.0			
7.0	51.6	50.0	35.0	24.0	17.0	14.0	
8.0	43.9	43.9	35.0	24.0	17.0	14.0	12.0
9.0	37.9	38.0	35.0	24.0	17.0	14.0	12.0
10.0		33.0	33.0	24.0	17.0	14.0	12.0
12.0		23.6	23.5	23.2	17.0	14.0	12.0
14.0		17.6	17.6	19.2	15.8	14.0	12.0
16.0		13.5	13.5	15.1	14.0	14.0	12.0
18.0			10.3	12.0	12.6	13.1	12.0
20.0			7.9	9.6	10.6	11.0	11.0
22.0			6.0	7.7	8.7	9.1	9.6
24.0			4.4	6.1	7.1	7.5	8.0
26.0				4.7	5.7	6.1	6.7
28.0				3.5	4.6	5.0	5.4
30.0				2.6	3.6	4.0	4.4
32.0				1.7	2.8	3.1	3.6
34.0					2.0	2.4	2.8
36.0					1.4	1.8	2.2
38.0						1.2	1.6
40.0							1.1
Min, boom angle (°)	—	—	—	—	32	35	38
Standard hook	for 70 ton				for 50 ton		
Hook mass	900kg				600kg		
Parts of line	10	7	5			4	

(Unit: Metric ton)

Specification C2		Outriggers intermediately extended (7.4m) over side, with 8.5ton counterweight mounted to crane					
Working radius (m)	11.8m Boom	19.8m Boom	27.88m Boom	35.9m Boom	44.0m Boom	48.0m Boom	52.0m Boom
2.5	70.0						
3.0	70.0	50.0					
3.5	70.0	50.0					
4.0	70.0	50.0	35.0				
4.5	70.0	50.0	35.0				
5.0	70.0	50.0	35.0	24.0			
6.0	60.6	50.0	35.0	24.0			
7.0	51.6	50.0	35.0	24.0	17.0	14.0	
8.0	43.9	43.9	35.0	24.0	17.0	14.0	12.0
9.0	35.7	35.8	35.0	24.0	17.0	14.0	12.0
10.0		28.8	28.9	24.0	17.0	14.0	12.0
12.0		19.9	19.9	21.7	17.0	14.0	12.0
14.0		14.4	14.4	16.1	15.8	14.0	12.0
16.0		10.8	10.7	12.4	13.3	13.7	12.0
18.0			8.1	9.6	10.6	10.9	11.2
20.0			6.0	7.5	8.5	8.8	9.1
22.0			4.2	5.8	6.8	7.2	7.5
24.0			2.6	4.4	5.4	5.8	6.1
26.0				3.2	4.2	4.6	4.9
28.0				2.2	3.3	3.6	3.9
30.0				1.3	2.4	2.8	3.1
32.0					1.7	2.1	2.4
34.0						1.4	1.7
36.0							1.1
Min, boom angle (°)	—	—	—	29	41	43	45
Standard hook	for 70 ton				for 50 ton		
Hook mass	900kg				600kg		
Parts of line	10	7	5			4	

(Unit: Metric ton)

A

B

C

D

E

Without SL jib
With SL jib

Specification C3							
Outriggers intermediately extended (6.4m) over side, with 8.5ton counterweight mounted to crane							
Working radius (m)	11.8m Boom	19.8m Boom	27.88m Boom	35.9m Boom	44.0m Boom	48.0m Boom	52.0m Boom
2.5	70.0						
3.0	70.0	50.0					
3.5	70.0	50.0					
4.0	70.0	50.0	35.0				
4.5	70.0	50.0	35.0				
5.0	66.4	50.0	35.0	24.0			
6.0	56.8	50.0	35.0	24.0			
7.0	46.4	46.5	35.0	24.0	17.0	14.0	
8.0	35.1	35.2	35.0	24.0	17.0	14.0	12.0
9.0	27.7	27.7	27.7	24.0	17.0	14.0	12.0
10.0		22.4	22.4	24.0	17.0	14.0	12.0
12.0		15.5	15.4	17.1	17.0	14.0	12.0
14.0		11.1	11.0	12.6	13.6	14.0	12.0
16.0		8.1	8.0	9.6	10.5	10.8	11.2
18.0			5.8	7.3	8.2	8.5	8.9
20.0			3.7	5.4	6.4	6.8	7.1
22.0			2.1	3.9	4.9	5.3	5.6
24.0				2.7	3.7	4.1	4.4
26.0				1.6	2.7	3.1	3.4
28.0					1.8	2.2	2.6
30.0						1.5	1.8
Min, boom angle (°)	—	—	33	41	48	50	53
Standard hook	for 70 ton			for 50 ton			
Hook mass	900kg			600kg			
Parts of line	10	7	5	4			

(Unit: Metric ton)

Specification C4							
Outriggers intermediately extended (5.4m) over side, with 8.5ton counterweight mounted to crane							
Working radius (m)	11.8m Boom	19.8m Boom	27.88m Boom	35.9m Boom	44.0m Boom	48.0m Boom	52.0m Boom
2.5	70.0						
3.0	70.0	50.0					
3.5	70.0	50.0					
4.0	70.0	50.0	35.0				
4.5	67.2	50.0	35.0				
5.0	61.6	50.0	35.0	24.0			
6.0	43.9	43.9	35.0	24.0			
7.0	32.0	32.0	32.0	24.0	17.0	14.0	
8.0	24.6	24.5	24.5	24.0	17.0	14.0	12.0
9.0	19.5	19.4	19.4	21.2	17.0	14.0	12.0
10.0		15.7	15.7	17.4	17.0	14.0	12.0
12.0		10.7	10.6	12.2	13.1	13.5	12.0
14.0		7.5	7.4	8.9	9.8	10.1	10.4
16.0		5.2	5.1	6.5	7.4	7.7	8.0
18.0			3.2	4.8	5.6	5.9	6.2
20.0			1.5	3.4	4.3	4.6	4.8
22.0				2.1	3.1	3.5	3.8
24.0					2.1	2.5	2.8
Min, boom angle (°)	—	—	40	50	55	58	60
Standard hook	for 70 ton			for 50 ton			
Hook mass	900kg			600kg			
Parts of line	10	7	5	4			

(Unit: Metric ton)



Based on ISO 4305 / Not exceed 75% of static tipping loads

Specification C5		Outriggers intermediately extended (4.4m) over side, with 8.5ton counterweight mounted to crane					
Working radius (m)	11.8m Boom	19.8m Boom	27.88m Boom	35.9m Boom	44.0m Boom	48.0m Boom	52.0m Boom
2.5	70.0						
3.0	70.0	50.0					
3.5	70.0	50.0					
4.0	67.4	50.0	35.0				
4.5	55.9	50.0	35.0				
5.0	44.7	44.8	35.0	24.0			
6.0	31.1	31.1	31.1	24.0			
7.0	23.1	23.0	23.0	24.0	17.0	14.0	
8.0	17.8	17.8	17.7	19.4	17.0	14.0	12.0
9.0	14.1	14.0	14.0	15.6	16.6	14.0	12.0
10.0		11.3	11.2	12.8	13.7	14.0	12.0
12.0		7.4	7.3	8.8	9.7	10.0	10.3
14.0		4.8	4.8	6.2	7.0	7.3	7.6
16.0		2.7	2.6	4.3	5.1	5.4	5.7
18.0				2.7	3.7	4.0	4.3
20.0							3.1
Min, boom angle (°)	—	—	52	57	64	66	67
Standard hook	for 70 ton				for 50 ton		
Hook mass	900kg				600kg		
Parts of line	10	7	5			4	

(Unit: Metric ton)

A

B

C

D

E

Specification C6		With retracted outriggers (3.4m) over side, with 8.5ton counterweight mounted to crane					
Working radius (m)	11.8m Boom	19.8m Boom	27.88m Boom	35.9m Boom	44.0m Boom	48.0m Boom	52.0m Boom
2.5	70.0						
3.0	70.0	50.0					
3.5	56.7	50.0					
4.0	43.0	42.9	35.0				
4.5	34.2	34.1	32.5				
5.0	28.0	27.9	27.9	24.0			
6.0	19.9	19.8	19.8	21.2			
7.0	14.8	14.7	14.7	16.2	16.7	14.0	
8.0	11.4	11.2	11.2	12.7	13.6	13.7	12.0
9.0	8.9	8.7	8.7	10.1	10.9	11.3	11.4
10.0		6.8	6.7	8.1	8.9	9.3	9.5
12.0		4.1	4.0	5.3	6.1	6.4	6.7
14.0		1.9		3.4	4.2	4.5	4.7
Min, boom angle (°)	—	39	62	65	70	72	73
Standard hook	for 70 ton				for 50 ton		
Hook mass	900kg				600kg		
Parts of line	10	7	5			4	

(Unit: Metric ton)

With SL jib

Without SL jib

Specification D1 Outriggers fully extended (8.4m) 360° full range, with 24ton or 16ton counterweight stowed in carrier							
Working radius (m)	11.8m Boom	19.8m Boom	27.88m Boom	35.9m Boom	44.0m Boom	48.0m Boom	52.0m Boom
2.5	70.0						
3.0	70.0	50.0					
3.5	70.0	50.0					
4.0	70.0	50.0	35.0				
4.5	70.0	50.0	35.0				
5.0	70.0	50.0	35.0	24.0			
6.0	60.2	50.0	35.0	24.0			
7.0	50.2	46.5	35.0	24.0	17.0	14.0	
8.0	42.8	39.5	35.0	24.0	17.0	14.0	12.0
9.0	37.0	34.1	33.9	24.0	17.0	14.0	12.0
10.0		29.7	29.5	24.0	17.0	14.0	12.0
12.0		22.3	22.2	23.2	17.0	14.0	12.0
14.0		15.5	15.4	17.5	15.8	14.0	12.0
16.0		11.1	11.1	13.0	14.0	14.0	12.0
18.0			8.1	9.9	11.0	11.3	11.6
20.0			5.7	7.6	8.6	9.0	9.3
22.0			3.8	5.8	6.9	7.2	7.5
24.0			2.4	4.3	5.4	5.8	6.1
26.0				3.0	4.1	4.5	4.8
28.0				2.0	3.1	3.5	3.8
30.0				1.2	2.3	2.6	2.9
32.0					1.5	1.9	2.2
34.0						1.3	1.6
Min, boom angle (°)	—	—	—	28	39	43	47
Standard hook	for 70 ton				for 50 ton		
Hook mass	900kg				600kg		
Parts of line	10	7	5			4	

(Unit: Metric ton)

Specification D2 Outriggers intermediately extended (7.4m) over side, with 24ton or 16ton counterweight stowed in carrier							
Working radius (m)	11.8m Boom	19.8m Boom	27.88m Boom	35.9m Boom	44.0m Boom	48.0m Boom	52.0m Boom
2.5	70.0						
3.0	70.0	50.0					
3.5	70.0	50.0					
4.0	70.0	50.0	35.0				
4.5	70.0	50.0	35.0				
5.0	70.0	50.0	35.0	24.0			
6.0	60.2	50.0	35.0	24.0			
7.0	50.2	46.5	35.0	24.0	17.0	14.0	
8.0	42.8	39.5	35.0	24.0	17.0	14.0	12.0
9.0	35.4	34.1	33.9	24.0	17.0	14.0	12.0
10.0		28.4	28.4	24.0	17.0	14.0	12.0
12.0		19.7	19.6	21.6	17.0	14.0	12.0
14.0		14.3	14.3	16.1	15.8	14.0	12.0
16.0		10.7	10.6	12.3	13.3	13.7	12.0
18.0			8.0	9.6	10.6	10.9	11.2
20.0			5.7	7.6	8.5	8.8	9.1
22.0			3.8	5.8	6.9	7.2	7.5
24.0			2.4	4.3	5.4	5.8	6.1
26.0				3.0	4.1	4.5	4.8
28.0				2.0	3.1	3.5	3.8
30.0				1.2	2.3	2.6	2.9
32.0					1.5	1.9	2.2
34.0						1.3	1.6
Min, boom angle (°)	—	—	—	28	39	43	47
Standard hook	for 70 ton				for 50 ton		
Hook mass	900kg				600kg		
Parts of line	10	7	5			4	

(Unit: Metric ton)



Based on ISO 4305 / Not exceed 75% of static tipping loads

Specification D3							
Outriggers intermediately extended (6.4m) over side, with 24ton or 16ton counterweight stowed in carrier							
Working radius (m)	11.8m Boom	19.8m Boom	27.88m Boom	35.9m Boom	44.0m Boom	48.0m Boom	52.0m Boom
2.5	70.0						
3.0	70.0	50.0					
3.5	70.0	50.0					
4.0	70.0	50.0	35.0				
4.5	70.0	50.0	35.0				
5.0	65.9	50.0	35.0	24.0			
6.0	56.5	50.0	35.0	24.0			
7.0	45.0	44.8	35.0	24.0	17.0	14.0	
8.0	34.1	33.9	33.9	24.0	17.0	14.0	12.0
9.0	26.9	26.7	26.7	24.0	17.0	14.0	12.0
10.0		21.6	21.6	23.7	17.0	14.0	12.0
12.0		14.9	14.9	16.7	17.0	14.0	12.0
14.0		10.7	10.6	12.4	13.3	13.7	12.0
16.0		7.8	7.7	9.3	10.3	10.6	10.9
18.0			5.3	7.1	8.0	8.3	8.6
20.0			3.5	5.3	6.3	6.6	6.9
22.0			1.9	3.9	4.9	5.2	5.5
24.0				2.6	3.7	4.0	4.3
26.0				1.6	2.7	3.0	3.3
28.0					1.8	2.2	2.5
30.0					1.0	1.4	1.7
Min, boom angle (°)	—	—	28	39	46	50	54
Standard hook	for 70 ton				for 50 ton		
Hook mass	900kg				600kg		
Parts of line	10	7	5			4	

(Unit: Metric ton)

A
B
C
D
E

Specification D4							
Outriggers intermediately extended (5.4m) over side, with 24ton or 16ton counterweight stowed in carrier							
Working radius (m)	11.8m Boom	19.8m Boom	27.88m Boom	35.9m Boom	44.0m Boom	48.0m Boom	52.0m Boom
2.5	70.0						
3.0	70.0	50.0					
3.5	70.0	50.0					
4.0	70.0	50.0	35.0				
4.5	66.5	50.0	35.0				
5.0	61.0	50.0	35.0	24.0			
6.0	41.6	41.3	35.0	24.0			
7.0	30.3	30.1	30.1	24.0	17.0	14.0	
8.0	23.3	23.0	23.1	24.0	17.0	14.0	12.0
9.0	18.5	18.2	18.2	20.2	17.0	14.0	12.0
10.0		14.7	14.7	16.5	17.0	14.0	12.0
12.0		10.0	9.9	11.6	12.5	12.8	12.0
14.0		6.9	6.8	8.4	9.2	9.6	9.8
16.0		4.8	4.7	6.1	7.0	7.3	7.5
18.0			2.7	4.5	5.3	5.6	5.8
20.0			1.1	3.1	4.0	4.3	4.5
22.0				1.8	2.9	3.3	3.5
24.0						2.3	2.6
Min, boom angle (°)	—	—	40	50	57	59	62
Standard hook	for 70 ton				for 50 ton		
Hook mass	900kg				600kg		
Parts of line	10	7	5			4	

(Unit: Metric ton)

Without SL jib
With SL jib

Specification D5							
Outriggers intermediately extended (4.4m) over side, with 24ton or 16ton counterweight stowed in carrier							
Working radius (m)	11.8m Boom	19.8m Boom	27.88m Boom	35.9m Boom	44.0m Boom	48.0m Boom	52.0m Boom
2.5	70.0						
3.0	70.0	50.0					
3.5	70.0	50.0					
4.0	66.3	50.0	35.0				
4.5	51.3	50.0	35.0				
5.0	41.0	40.9	35.0	24.0			
6.0	28.5	28.3	28.2	24.0			
7.0	21.1	20.9	20.9	22.3	17.0	14.0	
8.0	16.3	16.0	16.0	17.9	17.0	14.0	12.0
9.0	12.8	12.6	12.6	14.3	15.1	14.0	12.0
10.0		10.0	10.0	11.6	12.6	12.8	12.0
12.0		6.5	6.4	7.9	8.8	9.1	9.4
14.0		4.1	4.0	5.5	6.3	6.6	6.9
16.0		2.0		3.7	4.5	4.8	5.1
18.0					3.2	3.5	3.7
Min, boom angle (°)	—	20	54	60	65	67	69
Standard hook	for 70 ton	for 50 ton					
Hook mass	900kg	600kg					
Parts of line	10	7	5	4			

(Unit: Metric ton)

Specification D6							
With retracted outriggers (3.4m) over side, with 24ton or 16ton counterweight stowed in carrier							
Working radius (m)	11.8m Boom	19.8m Boom	27.88m Boom	35.9m Boom	44.0m Boom	48.0m Boom	52.0m Boom
2.5	70.0						
3.0	70.0	50.0					
3.5	49.8	47.5					
4.0	37.7	37.4	33.2				
4.5	29.9	29.6	28.0				
5.0	24.4	24.1	23.9	23.7			
6.0	17.2	16.9	17.0	18.4			
7.0	12.8	12.5	12.5	14.2	14.4	14.0	
8.0	9.7	9.4	9.4	11.0	11.8	11.7	11.7
9.0	7.5	7.2	7.1	8.6	9.5	9.7	9.7
10.0		5.5	5.4	6.9	7.7	8.0	8.1
12.0		3.0		4.3	5.1	5.4	5.6
Min, boom angle (°)	—	41	64	69	73	74	75
Standard hook	for 70 ton	for 50 ton					
Hook mass	900kg	600kg					
Parts of line	10	7	5	4			

(Unit: Metric ton)



Based on ISO 4305 / Not exceed 75% of static tipping loads

Specification E1 Outriggers fully extended (8.4m) 360° full range, with 8.5ton counterweight stowed in carrier or without counterweight							
Working radius (m)	11.8m Boom	19.8m Boom	27.88m Boom	35.9m Boom	44.0m Boom	48.0m Boom	52.0m Boom
2.5	70.0						
3.0	70.0	50.0					
3.5	70.0	50.0					
4.0	70.0	50.0	35.0				
4.5	70.0	50.0	35.0				
5.0	70.0	50.0	35.0	24.0			
6.0	60.2	50.0	35.0	24.0			
7.0	50.2	46.5	35.0	24.0	17.0	14.0	
8.0	40.0	39.5	35.0	24.0	17.0	14.0	12.0
9.0	31.8	31.6	31.6	24.0	17.0	14.0	12.0
10.0		25.8	25.8	24.0	17.0	14.0	12.0
12.0		18.1	18.1	19.9	17.0	14.0	12.0
14.0		13.3	13.2	14.9	15.8	14.0	12.0
16.0		9.6	9.5	11.4	12.5	12.8	12.0
18.0			6.7	8.5	9.6	10.0	10.3
20.0			4.7	6.4	7.5	7.8	8.1
22.0			2.9	4.8	5.8	6.2	6.5
24.0			1.3	3.5	4.5	4.9	5.2
26.0				2.2	3.5	3.8	4.1
28.0				1.2	2.5	2.9	3.2
30.0					1.5	2.0	2.3
32.0							1.6
Min, boom angle (°)	—	—	—	35	45	49	52
Standard hook	for 70 ton				for 50 ton		
Hook mass	900kg				600kg		
Parts of line	10	7	5			4	

(Unit: Metric ton)

A
B
C
D
E

Specification E2 Outriggers intermediately extended (7.4m) over side, with 8.5ton counterweight stowed in carrier or without counterweight							
Working radius (m)	11.8m Boom	19.8m Boom	27.88m Boom	35.9m Boom	44.0m Boom	48.0m Boom	52.0m Boom
2.5	70.0						
3.0	70.0	50.0					
3.5	70.0	50.0					
4.0	70.0	50.0	35.0				
4.5	70.0	50.0	35.0				
5.0	69.5	50.0	35.0	24.0			
6.0	59.5	50.0	35.0	24.0			
7.0	48.8	46.5	35.0	24.0	17.0	14.0	
8.0	35.8	35.6	35.0	24.0	17.0	14.0	12.0
9.0	27.7	27.4	27.4	24.0	17.0	14.0	12.0
10.0		21.8	21.8	24.0	17.0	14.0	12.0
12.0		14.7	14.6	16.6	17.0	14.0	12.0
14.0		10.3	10.2	12.0	13.0	13.4	12.0
16.0		7.3	7.2	8.9	9.9	10.2	10.5
18.0			4.8	6.7	7.6	8.0	8.2
20.0			3.0	4.9	5.9	6.2	6.5
22.0			1.4	3.4	4.4	4.8	5.1
24.0				2.2	3.3	3.6	3.9
26.0				1.1	2.3	2.7	2.9
28.0					1.4	1.8	2.1
Min, boom angle (°)	—	—	31	40	50	53	56
Standard hook	for 70 ton				for 50 ton		
Hook mass	900kg				600kg		
Parts of line	10	7	5			4	

(Unit: Metric ton)

Without SL jib
With SL jib

Based on ISO 4305 / Not exceed 75% of static tipping loads

Specification E3 Outriggers intermediately extended (6.4m) over side, with 8.5ton counterweight stowed in carrier or without counterweight							
Working radius (m)	11.8m Boom	19.8m Boom	27.88m Boom	35.9m Boom	44.0m Boom	48.0m Boom	52.0m Boom
2.5	70.0						
3.0	70.0	50.0					
3.5	70.0	50.0					
4.0	70.0	50.0	35.0				
4.5	70.0	50.0	35.0				
5.0	65.2	50.0	35.0	24.0			
6.0	51.0	50.0	35.0	24.0			
7.0	35.7	35.4	33.6	24.0	17.0	14.0	
8.0	26.7	26.4	26.4	24.0	17.0	14.0	12.0
9.0	20.8	20.5	20.5	22.2	17.0	14.0	12.0
10.0		16.4	16.3	18.4	17.0	14.0	12.0
12.0		10.8	10.8	12.6	13.7	13.7	12.0
14.0		7.4	7.2	9.0	10.0	10.3	10.5
16.0		4.7	4.6	6.5	7.4	7.8	8.1
18.0			2.6	4.5	5.6	5.9	6.2
20.0				3.0	4.0	4.4	4.7
22.0				1.6	2.8	3.1	3.4
24.0						2.1	
Min, boom angle (°)	—	—	42	51	58	60	63
Standard hook	for 70 ton				for 50 ton		
Hook mass	900kg				600kg		
Parts of line	10	7	5			4	

(Unit: Metric ton)

Specification E4 Outriggers intermediately extended (5.4m) over side, with 8.5ton counterweight stowed in carrier or without counterweight							
Working radius (m)	11.8m Boom	19.8m Boom	27.88m Boom	35.9m Boom	44.0m Boom	48.0m Boom	52.0m Boom
2.5	70.0						
3.0	70.0	50.0					
3.5	70.0	50.0					
4.0	70.0	50.0	35.0				
4.5	65.6	50.0	35.0				
5.0	50.5	50.0	35.0	24.0			
6.0	33.2	33.0	31.7	24.0			
7.0	23.9	23.6	23.7	24.0	17.0	14.0	
8.0	18.1	17.8	17.8	19.8	17.0	14.0	12.0
9.0	14.1	13.8	13.8	15.7	16.3	14.0	12.0
10.0		10.9	10.9	12.6	13.6	13.7	12.0
12.0		7.0	6.9	8.5	9.4	9.8	10.0
14.0		4.4	4.4	5.9	6.7	7.0	7.3
16.0		2.2	2.1	4.0	4.8	5.1	5.4
18.0					3.4	3.7	4.0
Min, boom angle (°)	—	—	53	60	65	67	69
Standard hook	for 70 ton				for 50 ton		
Hook mass	900kg				600kg		
Parts of line	10	7	5			4	

(Unit: Metric ton)



Based on ISO 4305 / Not exceed 75% of static tipping loads

Specification E5 Outriggers intermediately extended (4.4m) over side, with 8.5ton counterweight stowed in carrier or without counterweight							
Working radius (m)	11.8m Boom	19.8m Boom	27.88m Boom	35.9m Boom	44.0m Boom	48.0m Boom	52.0m Boom
2.5	70.0						
3.0	70.0	50.0					
3.5	70.0	50.0					
4.0	54.9	49.4	35.0				
4.5	41.6	40.4	34.5				
5.0	33.0	32.6	29.2	24.0			
6.0	22.6	22.2	21.5	21.8			
7.0	16.4	16.1	16.1	17.1	16.9	14.0	
8.0	12.4	12.0	12.0	13.6	13.8	13.7	12.0
9.0	9.5	9.2	9.2	10.9	11.3	11.3	11.3
10.0		7.1	7.0	8.7	9.3	9.4	9.4
12.0		4.1	4.0	5.6	6.3	6.5	6.6
14.0		1.6			4.3	4.4	4.6
Min, boom angle (°)	—	36	62	67	71	73	74
Standard hook	for 70 ton	for 50 ton					
Hook mass	900kg	600kg					
Parts of line	10	7	5	4			

(Unit: Metric ton)

A

B

C

D

E

Specification E6 With retracted outriggers (3.4m) over side, with 8.5ton counterweight stowed in carrier or without counterweight				
Working radius (m)	11.8m Boom	19.8m Boom	27.88m Boom	35.9m Boom
2.5	58.0			
3.0	58.0	48.7		
3.5	41.0	38.3		
4.0	30.8	30.4	26.3	
4.5	24.2	23.8	21.9	
5.0	19.5	19.2	18.4	18.5
6.0	13.5	13.2	13.3	14.0
7.0	9.7	9.4	9.4	10.7
8.0	7.1	6.8	6.8	8.2
9.0	5.2	4.9	4.9	6.3
10.0		3.5		
Min, boom angle (°)	—	53	70	74
Standard hook	for 70 ton	for 50 ton		
Hook mass	900kg	600kg		
Parts of line	10	7	5	4

(Unit: Metric ton)

With SL jib

Without SL jib

Based on ISO 4305 / Not exceed 75% of static tipping loads

Specification NA1							
Outriggers fully extended (8.4m) 360° full range, with 24ton counterweight mounted to crane							
Working radius (m)	11.8m Boom	19.8m Boom	27.88m Boom	35.9m Boom	44.0m Boom	48.0m Boom	52.0m Boom
2.5	70.0						
3.0	70.0	50.0					
3.5	70.0	50.0					
4.0	70.0	50.0	35.0				
4.5	70.0	50.0	35.0				
5.0	70.0	50.0	35.0	24.0			
6.0	67.3	50.0	35.0	24.0			
7.0	58.9	50.0	35.0	24.0	17.0	14.0	
8.0	50.6	49.7	35.0	24.0	17.0	14.0	12.0
9.0	44.1	43.2	35.0	24.0	17.0	14.0	12.0
10.0		38.0	33.7	24.0	17.0	14.0	12.0
12.0		30.2	27.8	23.2	17.0	14.0	12.0
14.0		24.6	23.4	20.7	15.8	14.0	12.0
16.0		19.6	19.4	18.4	14.0	14.0	12.0
18.0			15.7	16.3	12.6	13.1	12.0
20.0			12.9	14.2	11.5	11.7	11.0
22.0			10.5	12.0	10.5	10.4	9.8
24.0			8.6	10.1	9.6	9.3	8.8
26.0				8.5	8.9	8.4	7.9
28.0				7.2	8.1	7.6	7.1
30.0				6.1	7.0	6.9	6.5
32.0				5.1	6.0	6.3	5.9
34.0					5.1	5.5	5.3
36.0					4.4	4.7	4.9
38.0					3.7	4.1	4.3
40.0					3.1	3.5	3.7
42.0					1.4	2.9	3.2
44.0						2.5	2.7
46.0							2.3
48.0							1.9
Min, boom angle (°)	—	—	—	—	—	11	16
Standard hook	for 70 ton			for 50 ton			
Hook mass	900kg			600kg			
Parts of line	10	7	5	4			

(Unit: Metric ton)



Based on ISO 4305 / Not exceed 75% of static tipping loads

Specification NA2		Outriggers intermediately extended (7.4m) over side, with 24ton counterweight mounted to crane					
Working radius (m)	11.8m Boom	19.8m Boom	27.88m Boom	35.9m Boom	44.0m Boom	48.0m Boom	52.0m Boom
2.5	70.0						
3.0	70.0	50.0					
3.5	70.0	50.0					
4.0	70.0	50.0	35.0				
4.5	70.0	50.0	35.0				
5.0	70.0	50.0	35.0	24.0			
6.0	64.4	50.0	35.0	24.0			
7.0	56.5	50.0	35.0	24.0	17.0	14.0	
8.0	50.2	49.3	35.0	24.0	17.0	14.0	12.0
9.0	44.1	43.2	35.0	24.0	17.0	14.0	12.0
10.0		38.0	33.7	24.0	17.0	14.0	12.0
12.0		29.1	27.8	23.2	17.0	14.0	12.0
14.0		22.0	21.8	20.7	15.8	14.0	12.0
16.0		17.2	17.0	18.4	14.0	14.0	12.0
18.0			13.5	14.9	12.6	13.1	12.0
20.0			10.9	12.3	11.5	11.7	11.0
22.0			8.9	10.2	10.5	10.4	9.8
24.0			7.2	8.5	9.3	9.3	8.8
26.0				7.2	8.0	8.3	7.9
28.0				5.9	6.8	7.2	7.1
30.0				4.9	5.8	6.2	6.4
32.0				4.0	4.9	5.2	5.5
34.0					4.1	4.4	4.7
36.0					3.4	3.7	4.0
38.0					2.8	3.1	3.4
40.0					2.2	2.6	2.8
42.0					1.4	2.1	2.3
44.0						1.6	1.9
46.0							1.4
Min. boom angle (°)	—	—	—	—	—	20	25
Standard hook	for 70 ton				for 50 ton		
Hook mass	900kg				600kg		
Parts of line	10	7	5			4	

(Unit: Metric ton)

NA
NB
NC
ND
NE
With SL jib
Without SL jib

Specification NA3							
Outriggers intermediately extended (6.4m) over side, with 24ton counterweight mounted to crane							
Working radius (m)	11.8m Boom	19.8m Boom	27.88m Boom	35.9m Boom	44.0m Boom	48.0m Boom	52.0m Boom
2.5	70.0						
3.0	70.0	50.0					
3.5	70.0	50.0					
4.0	70.0	50.0	35.0				
4.5	70.0	50.0	35.0				
5.0	70.0	50.0	35.0	24.0			
6.0	60.9	50.0	35.0	24.0			
7.0	53.3	50.0	35.0	24.0	17.0	14.0	
8.0	47.1	46.2	35.0	24.0	17.0	14.0	12.0
9.0	40.6	39.5	35.0	24.0	17.0	14.0	12.0
10.0		32.6	32.6	24.0	17.0	14.0	12.0
12.0		23.6	23.4	23.2	17.0	14.0	12.0
14.0		17.9	17.7	19.1	15.8	14.0	12.0
16.0		13.9	13.7	15.1	14.0	14.0	12.0
18.0			10.8	12.1	12.6	13.1	12.0
20.0			8.6	9.9	10.7	11.1	11.0
22.0			6.8	8.1	8.9	9.3	9.5
24.0			5.4	6.7	7.5	7.9	8.1
26.0				5.4	6.3	6.7	6.9
28.0				4.3	5.2	5.6	5.9
30.0				3.4	4.3	4.7	4.9
32.0				2.6	3.5	3.9	4.1
34.0					2.8	3.2	3.4
36.0					2.2	2.5	2.8
38.0					1.6	2.0	2.3
40.0					1.1	1.5	1.8
42.0							1.3
Min, boom angle (°)	—	—	—	—	20	32	35
Standard hook	for 70 ton	for 50 ton					
Hook mass	900kg	600kg					
Parts of line	10	7	5	4			

(Unit: Metric ton)

Specification NA4							
Outriggers intermediately extended (5.4m) over side, with 24ton counterweight mounted to crane							
Working radius (m)	11.8m Boom	19.8m Boom	27.88m Boom	35.9m Boom	44.0m Boom	48.0m Boom	52.0m Boom
2.5	70.0						
3.0	70.0	50.0					
3.5	70.0	50.0					
4.0	70.0	50.0	35.0				
4.5	70.0	50.0	35.0				
5.0	66.2	50.0	35.0	24.0			
6.0	56.8	50.0	35.0	24.0			
7.0	46.6	45.6	35.0	24.0	17.0	14.0	
8.0	36.7	35.8	35.0	24.0	17.0	14.0	12.0
9.0	30.0	29.0	29.0	24.0	17.0	14.0	12.0
10.0		24.1	24.1	24.0	17.0	14.0	12.0
12.0		17.5	17.4	18.7	17.0	14.0	12.0
14.0		13.2	13.0	14.3	15.1	14.0	12.0
16.0		10.2	10.0	11.2	12.0	12.4	12.0
18.0			7.7	8.9	9.7	10.0	10.3
20.0			6.0	7.2	7.9	8.3	8.5
22.0			4.6	5.8	6.5	6.8	7.0
24.0			3.4	4.6	5.3	5.7	5.9
26.0				3.7	4.4	4.7	4.9
28.0				2.8	3.6	3.9	4.1
30.0				1.9	2.8	3.2	3.4
32.0				1.2	2.2	2.5	2.8
34.0					1.5	1.9	2.2
36.0						1.3	1.6
38.0							1.1
Min, boom angle (°)	—	—	—	—	37	40	42
Standard hook	for 70 ton	for 50 ton					
Hook mass	900kg	600kg					
Parts of line	10	7	5	4			

(Unit: Metric ton)



Based on ISO 4305 / Not exceed 75% of static tipping loads

Specification NA5		Outriggers intermediately extended (4.4m) over side, with 24ton counterweight mounted to crane					
Working radius (m)	11.8m Boom	19.8m Boom	27.88m Boom	35.9m Boom	44.0m Boom	48.0m Boom	52.0m Boom
2.5	70.0						
3.0	70.0	50.0					
3.5	70.0	50.0					
4.0	70.0	50.0	35.0				
4.5	66.2	50.0	35.0				
5.0	60.7	50.0	35.0	24.0			
6.0	46.1	45.1	35.0	24.0			
7.0	35.3	34.3	34.5	24.0	17.0	14.0	
8.0	28.3	27.3	27.3	24.0	17.0	14.0	12.0
9.0	23.3	22.3	22.3	23.6	17.0	14.0	12.0
10.0		18.6	18.5	19.8	17.0	14.0	12.0
12.0		13.4	13.3	14.5	15.3	14.0	12.0
14.0		10.0	9.8	11.0	11.8	12.2	12.0
16.0		7.6	7.3	8.5	9.2	9.6	9.9
18.0			5.5	6.6	7.4	7.7	7.9
20.0			4.0	5.2	5.9	6.2	6.5
22.0			2.6	4.0	4.7	5.1	5.3
24.0			1.4	3.0	3.8	4.1	4.3
26.0				2.0	2.9	3.3	3.5
28.0				1.1	2.1	2.5	2.7
30.0					1.4	1.8	2.1
32.0						1.1	1.4
Min. boom angle (°)	—	—	—	36	45	47	51
Standard hook	for 70 ton	for 50 ton					
Hook mass	900kg	600kg					
Parts of line	10	7	5	4			

(Unit: Metric ton)

NA
NB
NC
ND
NE

Without SL jib
With SL jib

Based on ISO 4305 / Not exceed 75% of static tipping loads

Specification NB1		Outriggers fully extended (8.4m) 360° full range, with 16ton counterweight mounted to crane					
Working radius (m)	11.8m Boom	19.8m Boom	27.88m Boom	35.9m Boom	44.0m Boom	48.0m Boom	52.0m Boom
2.5	70.0						
3.0	70.0	50.0					
3.5	70.0	50.0					
4.0	70.0	50.0	35.0				
4.5	70.0	50.0	35.0				
5.0	70.0	50.0	35.0	24.0			
6.0	66.6	50.0	35.0	24.0			
7.0	56.1	50.0	35.0	24.0	17.0	14.0	
8.0	48.1	47.2	35.0	24.0	17.0	14.0	12.0
9.0	41.9	41.0	35.0	24.0	17.0	14.0	12.0
10.0		36.0	33.7	24.0	17.0	14.0	12.0
12.0		27.9	27.4	23.2	17.0	14.0	12.0
14.0		21.3	20.9	20.7	15.8	14.0	12.0
16.0		16.8	16.4	17.9	14.0	14.0	12.0
18.0			13.1	14.6	12.6	13.1	12.0
20.0			10.4	12.0	11.5	11.7	11.0
22.0			8.3	9.9	10.5	10.4	9.8
24.0			6.7	8.2	9.2	9.3	8.8
26.0				6.8	7.7	8.1	7.9
28.0				5.6	6.5	6.8	7.1
30.0				4.6	5.5	5.8	6.1
32.0				3.7	4.6	4.9	5.2
34.0					3.9	4.2	4.4
36.0					3.2	3.5	3.7
38.0					2.5	2.9	3.1
40.0					2.0	2.3	2.6
42.0					1.4	1.8	2.1
44.0						1.3	1.6
46.0							1.2
Min. boom angle (°)	—	—	—	—	—	16	22
Standard hook	for 70 ton				for 50 ton		
Hook mass	900kg				600kg		
Parts of line	10	7	5			4	

(Unit: Metric ton)



Based on ISO 4305 / Not exceed 75% of static tipping loads

Specification NB2		Outriggers intermediately extended (7.4m) over side, with 16ton counterweight mounted to crane					
Working radius (m)	11.8m Boom	19.8m Boom	27.88m Boom	35.9m Boom	44.0m Boom	48.0m Boom	52.0m Boom
2.5	70.0						
3.0	70.0	50.0					
3.5	70.0	50.0					
4.0	70.0	50.0	35.0				
4.5	70.0	50.0	35.0				
5.0	70.0	50.0	35.0	24.0			
6.0	63.5	50.0	35.0	24.0			
7.0	55.7	50.0	35.0	24.0	17.0	14.0	
8.0	48.1	47.2	35.0	24.0	17.0	14.0	12.0
9.0	41.9	41.0	35.0	24.0	17.0	14.0	12.0
10.0		34.5	33.7	24.0	17.0	14.0	12.0
12.0		24.4	24.0	23.2	17.0	14.0	12.0
14.0		18.3	17.8	19.5	15.8	14.0	12.0
16.0		14.1	13.7	15.3	14.0	14.0	12.0
18.0			10.7	12.2	12.6	13.1	12.0
20.0			8.4	9.9	10.8	11.0	11.0
22.0			6.7	8.1	8.9	9.2	9.4
24.0			5.2	6.6	7.4	7.7	8.0
26.0				5.3	6.2	6.5	6.7
28.0				4.2	5.1	5.4	5.7
30.0				3.2	4.2	4.5	4.7
32.0				2.5	3.4	3.7	3.9
34.0					2.7	3.0	3.2
36.0					2.1	2.4	2.6
38.0					1.5	1.8	2.1
40.0						1.3	1.6
42.0							1.1
Min. boom angle (°)	—	—	—	—	28	32	35
Standard hook	for 70 ton	for 50 ton					
Hook mass	900kg	600kg					
Parts of line	10	7	5	4			

(Unit: Metric ton)

NA
NB
NC
ND
NE
With SL jib
Without SL jib

Specification NB3							
Outriggers intermediately extended (6.4m) over side, with 16ton counterweight mounted to crane							
Working radius (m)	11.8m Boom	19.8m Boom	27.88m Boom	35.9m Boom	44.0m Boom	48.0m Boom	52.0m Boom
2.5	70.0						
3.0	70.0	50.0					
3.5	70.0	50.0					
4.0	70.0	50.0	35.0				
4.5	70.0	50.0	35.0				
5.0	69.5	50.0	35.0	24.0			
6.0	59.9	50.0	35.0	24.0			
7.0	52.3	50.0	35.0	24.0	17.0	14.0	
8.0	42.8	41.9	35.0	24.0	17.0	14.0	12.0
9.0	34.4	33.5	33.0	24.0	17.0	14.0	12.0
10.0		27.5	27.1	24.0	17.0	14.0	12.0
12.0		19.6	19.2	20.9	17.0	14.0	12.0
14.0		14.6	14.2	15.8	15.8	14.0	12.0
16.0		11.2	10.8	12.3	13.2	13.5	12.0
18.0			8.3	9.7	10.6	10.9	11.1
20.0			6.4	7.8	8.6	8.9	9.1
22.0			4.8	6.1	7.1	7.3	7.6
24.0			3.3	4.8	5.7	6.1	6.3
26.0				3.7	4.6	4.9	5.2
28.0				2.7	3.6	4.0	4.2
30.0				1.9	2.8	3.1	3.4
32.0				1.1	2.1	2.4	2.7
34.0					1.5	1.8	2.1
36.0						1.2	1.5
Min, boom angle (°)	—	—	—	—	38	40	45
Standard hook	for 70 ton	for 50 ton					
Hook mass	900kg	600kg					
Parts of line	10	7	5	4			

(Unit: Metric ton)

Specification NB4							
Outriggers intermediately extended (5.4m) over side, with 16ton counterweight mounted to crane							
Working radius (m)	11.8m Boom	19.8m Boom	27.88m Boom	35.9m Boom	44.0m Boom	48.0m Boom	52.0m Boom
2.5	70.0						
3.0	70.0	50.0					
3.5	70.0	50.0					
4.0	70.0	50.0	35.0				
4.5	70.0	50.0	35.0				
5.0	64.8	50.0	35.0	24.0			
6.0	53.0	50.0	35.0	24.0			
7.0	39.4	38.7	35.0	24.0	17.0	14.0	
8.0	30.9	30.1	29.8	24.0	17.0	14.0	12.0
9.0	25.1	24.3	23.9	24.0	17.0	14.0	12.0
10.0		20.0	19.7	21.3	17.0	14.0	12.0
12.0		14.3	13.9	15.4	16.3	14.0	12.0
14.0		10.5	10.2	11.6	12.4	12.7	12.0
16.0		7.9	7.6	8.9	9.7	10.0	10.2
18.0			5.6	6.9	7.7	8.0	8.2
20.0			4.1	5.4	6.2	6.4	6.6
22.0			2.7	4.2	4.9	5.2	5.4
24.0			1.4	3.1	3.9	4.2	4.4
26.0				2.1	3.1	3.4	3.6
28.0				1.2	2.2	2.6	2.8
30.0					1.5	1.9	2.1
32.0						1.2	1.5
Min, boom angle (°)	—	—	—	36	46	47	51
Standard hook	for 70 ton	for 50 ton					
Hook mass	900kg	600kg					
Parts of line	10	7	5	4			

(Unit: Metric ton)



Based on ISO 4305 / Not exceed 75% of static tipping loads

Specification NB5								Outriggers intermediately extended (4.4m) over side, with 16ton counterweight mounted to crane							
Working radius (m)	11.8m Boom	19.8m Boom	27.88m Boom	35.9m Boom	44.0m Boom	48.0m Boom	52.0m Boom								
2.5	70.0														
3.0	70.0	50.0													
3.5	70.0	50.0													
4.0	70.0	50.0	35.0												
4.5	64.6	50.0	35.0												
5.0	54.5	50.0	35.0	24.0											
6.0	38.7	38.1	35.0	24.0											
7.0	29.4	28.8	28.4	24.0	17.0	14.0									
8.0	23.4	22.7	22.3	24.0	17.0	14.0	12.0								
9.0	19.1	18.3	18.0	19.6	17.0	14.0	12.0								
10.0		15.1	14.8	16.3	17.0	14.0	12.0								
12.0		10.6	10.3	11.7	12.6	12.9	12.0								
14.0		7.7	7.3	8.7	9.5	9.8	10.0								
16.0		5.6	5.2	6.5	7.3	7.6	7.8								
18.0			3.6	4.9	5.7	5.9	6.1								
20.0			2.0	3.6	4.4	4.6	4.9								
22.0				2.4	3.4	3.6	3.8								
24.0				1.4	2.4	2.7	3.0								
26.0					1.5	1.9	2.1								
Min, boom angle (°)	—	—	41	46	53	56	59								
Standard hook	for 70 ton			for 50 ton											
Hook mass	900kg			600kg											
Parts of line	10	7	5			4									

(Unit: Metric ton)

NA

NB

NC

ND

NE

Specification NB6								With retracted outriggers (3.4m) over side, with 16ton counterweight mounted to crane							
Working radius (m)	11.8m Boom	19.8m Boom	27.88m Boom	35.9m Boom	44.0m Boom	48.0m Boom	52.0m Boom								
2.5	70.0														
3.0	70.0	50.0													
3.5	69.0	50.0													
4.0	53.0	50.0	35.0												
4.5	42.6	42.3	35.0												
5.0	35.4	35.0	34.7	24.0											
6.0	25.9	25.5	25.1	24.0											
7.0	20.0	19.5	19.2	20.8	17.0	14.0									
8.0	16.0	15.4	15.1	16.6	17.0	14.0	12.0								
9.0	13.0	12.4	12.1	13.5	14.4	14.0	12.0								
10.0		10.1	9.8	11.2	12.0	12.3	12.0								
12.0		6.9	6.6	7.9	8.7	8.9	9.1								
14.0		4.7	4.4	5.6	6.4	6.6	6.8								
16.0		3.2	2.8	4.0	4.8	5.0	5.2								
18.0				2.8	3.5	3.8	3.9								
20.0					2.6	2.8	3.0								
Min, boom angle (°)	—	—	52	59	62	65	67								
Standard hook	for 70 ton			for 50 ton											
Hook mass	900kg			600kg											
Parts of line	10	7	5			4									

(Unit: Metric ton)

With SL jib

Without SL jib

Based on ISO 4305 / Not exceed 75% of static tipping loads

Specification NC1							
Outriggers fully extended (8.4m) 360° full range, with 8.5ton counterweight mounted to crane							
Working radius (m)	11.8m Boom	19.8m Boom	27.88m Boom	35.9m Boom	44.0m Boom	48.0m Boom	52.0m Boom
2.5	70.0						
3.0	70.0	50.0					
3.5	70.0	50.0					
4.0	70.0	50.0	35.0				
4.5	70.0	50.0	35.0				
5.0	70.0	50.0	35.0	24.0			
6.0	63.2	50.0	35.0	24.0			
7.0	53.1	50.0	35.0	24.0	17.0	14.0	
8.0	45.5	44.6	35.0	24.0	17.0	14.0	12.0
9.0	39.6	38.7	35.0	24.0	17.0	14.0	12.0
10.0		32.8	32.3	24.0	17.0	14.0	12.0
12.0		23.6	23.2	23.2	17.0	14.0	12.0
14.0		17.8	17.4	18.9	15.8	14.0	12.0
16.0		13.9	13.4	14.9	14.0	14.0	12.0
18.0			10.4	11.9	12.6	13.0	12.0
20.0			8.1	9.6	10.5	10.8	11.0
22.0			6.2	7.6	8.6	8.9	9.4
24.0			4.7	5.9	6.9	7.2	7.7
26.0				4.6	5.5	5.9	6.4
28.0				3.5	4.4	4.8	5.2
30.0				2.6	3.5	3.8	4.2
32.0				1.8	2.7	3.0	3.4
34.0					2.0	2.4	2.7
36.0					1.5	1.8	2.1
38.0						1.3	1.6
40.0							1.1
Min, boom angle (°)	—	—	—	—	32	35	38
Standard hook	for 70 ton				for 50 ton		
Hook mass	900kg				600kg		
Parts of line	10	7	5			4	

(Unit: Metric ton)

Specification NC2							
Outriggers intermediately extended (7.4m) over side, with 8.5ton counterweight mounted to crane							
Working radius (m)	11.8m Boom	19.8m Boom	27.88m Boom	35.9m Boom	44.0m Boom	48.0m Boom	52.0m Boom
2.5	70.0						
3.0	70.0	50.0					
3.5	70.0	50.0					
4.0	70.0	50.0	35.0				
4.5	70.0	50.0	35.0				
5.0	70.0	50.0	35.0	24.0			
6.0	62.2	50.0	35.0	24.0			
7.0	53.1	50.0	35.0	24.0	17.0	14.0	
8.0	45.5	44.6	35.0	24.0	17.0	14.0	12.0
9.0	36.4	35.1	34.8	24.0	17.0	14.0	12.0
10.0		28.4	28.0	24.0	17.0	14.0	12.0
12.0		19.8	19.4	21.0	17.0	14.0	12.0
14.0		14.6	14.2	15.7	15.8	14.0	12.0
16.0		11.0	10.6	12.0	12.9	13.2	12.0
18.0			8.1	9.4	10.2	10.6	10.8
20.0			6.1	7.5	8.2	8.5	8.8
22.0			4.5	5.8	6.7	7.0	7.2
24.0			3.0	4.4	5.3	5.7	5.9
26.0				3.3	4.2	4.5	4.8
28.0				2.4	3.3	3.6	3.9
30.0				1.5	2.5	2.8	3.1
32.0					1.8	2.1	2.4
34.0					1.1	1.5	1.8
36.0							1.2
Min, boom angle (°)	—	—	—	29	37	43	45
Standard hook	for 70 ton				for 50 ton		
Hook mass	900kg				600kg		
Parts of line	10	7	5			4	

(Unit: Metric ton)



Based on ISO 4305 / Not exceed 75% of static tipping loads

Specification NC3		Outriggers intermediately extended (6.4m) over side, with 8.5ton counterweight mounted to crane					
Working radius (m)	11.8m Boom	19.8m Boom	27.88m Boom	35.9m Boom	44.0m Boom	48.0m Boom	52.0m Boom
2.5	70.0						
3.0	70.0	50.0					
3.5	70.0	50.0					
4.0	70.0	50.0	35.0				
4.5	70.0	50.0	35.0				
5.0	68.0	50.0	35.0	24.0			
6.0	58.4	50.0	35.0	24.0			
7.0	46.7	45.5	35.0	24.0	17.0	14.0	
8.0	35.7	34.5	34.0	24.0	17.0	14.0	12.0
9.0	28.5	27.3	26.9	24.0	17.0	14.0	12.0
10.0		22.3	21.8	23.5	17.0	14.0	12.0
12.0		15.5	15.1	16.6	17.0	14.0	12.0
14.0		11.3	10.9	12.3	13.2	13.5	12.0
16.0		8.4	8.0	9.4	10.2	10.5	10.8
18.0			5.9	7.2	8.0	8.3	8.6
20.0			4.0	5.4	6.3	6.6	6.9
22.0			2.5	4.0	4.9	5.2	5.5
24.0			1.2	2.8	3.7	4.0	4.3
26.0				1.8	2.7	3.1	3.3
28.0					1.9	2.3	2.5
30.0					1.2	1.5	1.9
Min, boom angle (°)	—	—	—	41	45	50	52
Standard hook	for 70 ton	for 50 ton					
Hook mass	900kg	600kg					
Parts of line	10	7	5	4			

(Unit: Metric ton)

NA
NB
NC
ND
NE

Specification NC4		Outriggers intermediately extended (5.4m) over side, with 8.5ton counterweight mounted to crane					
Working radius (m)	11.8m Boom	19.8m Boom	27.88m Boom	35.9m Boom	44.0m Boom	48.0m Boom	52.0m Boom
2.5	70.0						
3.0	70.0	50.0					
3.5	70.0	50.0					
4.0	70.0	50.0	35.0				
4.5	68.8	50.0	35.0				
5.0	63.1	50.0	35.0	24.0			
6.0	44.1	42.9	35.0	24.0			
7.0	32.5	31.4	30.9	24.0	17.0	14.0	
8.0	25.3	24.2	23.8	24.0	17.0	14.0	12.0
9.0	20.4	19.3	18.9	20.5	17.0	14.0	12.0
10.0		15.7	15.3	16.8	17.0	14.0	12.0
12.0		10.9	10.5	11.9	12.7	13.0	12.0
14.0		7.8	7.4	8.7	9.4	9.7	10.0
16.0		5.6	5.2	6.4	7.2	7.5	7.7
18.0			3.5	4.8	5.5	5.8	6.0
20.0			1.9	3.5	4.2	4.5	4.7
22.0				2.3	3.1	3.5	3.7
24.0				1.2	2.2	2.5	2.7
Min, boom angle (°)	—	—	40	46	54	57	60
Standard hook	for 70 ton	for 50 ton					
Hook mass	900kg	600kg					
Parts of line	10	7	5	4			

(Unit: Metric ton)

With SL jib
Without SL jib

Based on ISO 4305 / Not exceed 75% of static tipping loads

Specification NC5		Outriggers intermediately extended (4.4m) over side, with 8.5ton counterweight mounted to crane					
Working radius (m)	11.8m Boom	19.8m Boom	27.88m Boom	35.9m Boom	44.0m Boom	48.0m Boom	52.0m Boom
2.5	70.0						
3.0	70.0	50.0					
3.5	70.0	50.0					
4.0	68.8	50.0	35.0				
4.5	55.7	50.0	35.0				
5.0	44.8	43.7	35.0	24.0			
6.0	31.5	30.5	30.1	24.0			
7.0	23.8	22.7	22.3	23.6	17.0	14.0	
8.0	18.7	17.7	17.3	18.8	17.0	14.0	12.0
9.0	15.1	14.1	13.7	15.1	15.9	14.0	12.0
10.0		11.4	11.0	12.4	13.2	13.5	12.0
12.0		7.7	7.3	8.6	9.3	9.6	9.9
14.0		5.2	4.8	6.1	6.8	7.1	7.3
16.0		3.5	2.9	4.3	5.0	5.3	5.5
18.0				2.8	3.7	3.9	4.1
20.0					2.4	2.8	3.0
Min, boom angle (°)	—	—	52	58	62	64	67
Standard hook	for 70 ton				for 50 ton		
Hook mass	900kg				600kg		
Parts of line	10	7	5			4	

(Unit: Metric ton)

Specification NC6		With retracted outriggers (3.4m) over side, with 8.5ton counterweight mounted to crane					
Working radius (m)	11.8m Boom	19.8m Boom	27.88m Boom	35.9m Boom	44.0m Boom	48.0m Boom	52.0m Boom
2.5	70.0						
3.0	70.0	50.0					
3.5	56.3	50.0					
4.0	43.0	41.8	35.0				
4.5	34.4	33.2	31.5				
5.0	28.4	27.3	26.9	24.0			
6.0	20.5	19.5	19.1	20.5			
7.0	15.6	14.6	14.3	15.6	16.0	14.0	
8.0	12.2	11.3	11.0	12.2	13.0	13.1	12.0
9.0	9.8	8.9	8.5	9.8	10.5	10.8	10.9
10.0		7.0	6.7	7.9	8.6	8.9	9.1
12.0		4.4	4.1	5.2	5.9	6.2	6.4
14.0		2.6		3.4	4.1	4.3	4.6
Min, boom angle (°)	—	39	62	65	69	71	73
Standard hook	for 70 ton				for 50 ton		
Hook mass	900kg				600kg		
Parts of line	10	7	5			4	

(Unit: Metric ton)



Based on ISO 4305 / Not exceed 75% of static tipping loads

Specification ND1		Outriggers fully extended (8.4m) 360° full range, with 24ton or 16ton counterweight stowed in carrier						
Working radius (m)	11.8m Boom	19.8m Boom	27.88m Boom	35.9m Boom	44.0m Boom	48.0m Boom	52.0m Boom	
2.5	70.0							
3.0	70.0	50.0						
3.5	70.0	50.0						
4.0	70.0	50.0	35.0					
4.5	70.0	50.0	35.0					
5.0	70.0	50.0	35.0	24.0				
6.0	60.2	50.0	35.0	24.0				
7.0	50.2	49.1	35.0	24.0	17.0	14.0		
8.0	42.8	41.9	35.0	24.0	17.0	14.0	12.0	
9.0	37.0	36.3	35.0	24.0	17.0	14.0	12.0	
10.0		31.8	31.4	24.0	17.0	14.0	12.0	
12.0		21.9	21.4	23.2	17.0	14.0	12.0	
14.0		15.3	14.9	16.8	15.8	14.0	12.0	
16.0		11.1	10.7	12.5	13.5	13.9	12.0	
18.0			7.8	9.5	10.5	10.8	11.1	
20.0			5.7	7.3	8.2	8.6	8.8	
22.0			4.1	5.5	6.5	6.9	7.1	
24.0			2.6	4.1	5.1	5.4	5.7	
26.0				2.9	3.9	4.3	4.5	
28.0				2.0	2.9	3.3	3.6	
30.0				1.2	2.1	2.5	2.7	
32.0					1.4	1.8	2.0	
34.0						1.2	1.4	
Min, boom angle (°)	—	—	—	29	42	44	48	
Standard hook	for 70 ton				for 50 ton			
Hook mass	900kg				600kg			
Parts of line	10	7	5			4		

(Unit: Metric ton)

NA
NB
NC
ND
NE

Specification ND2		Outriggers intermediately extended (7.4m) over side, with 24ton or 16ton counterweight stowed in carrier						
Working radius (m)	11.8m Boom	19.8m Boom	27.88m Boom	35.9m Boom	44.0m Boom	48.0m Boom	52.0m Boom	
2.5	70.0							
3.0	70.0	50.0						
3.5	70.0	50.0						
4.0	70.0	50.0	35.0					
4.5	70.0	50.0	35.0					
5.0	70.0	50.0	35.0	24.0				
6.0	60.2	50.0	35.0	24.0				
7.0	50.2	49.1	35.0	24.0	17.0	14.0		
8.0	42.8	41.9	35.0	24.0	17.0	14.0	12.0	
9.0	36.1	35.0	34.6	24.0	17.0	14.0	12.0	
10.0		28.3	27.9	24.0	17.0	14.0	12.0	
12.0		19.7	19.3	21.2	17.0	14.0	12.0	
14.0		14.5	14.1	15.8	15.8	14.0	12.0	
16.0		10.9	10.5	12.1	13.0	13.3	12.0	
18.0			7.8	9.5	10.4	10.7	10.9	
20.0			5.7	7.3	8.2	8.6	8.8	
22.0			4.1	5.5	6.5	6.9	7.1	
24.0			2.6	4.1	5.1	5.4	5.7	
26.0				2.9	3.9	4.3	4.5	
28.0				2.0	2.9	3.3	3.6	
30.0				1.2	2.1	2.5	2.7	
32.0					1.4	1.8	2.0	
34.0						1.2	1.4	
Min, boom angle (°)	—	—	—	30	42	44	48	
Standard hook	for 70 ton				for 50 ton			
Hook mass	900kg				600kg			
Parts of line	10	7	5			4		

(Unit: Metric ton)

With SL jib
Without SL jib

Based on ISO 4305 / Not exceed 75% of static tipping loads

Specification ND3 Outriggers intermediately extended (6.4m) over side, with 24ton or 16ton counterweight stowed in carrier							
Working radius (m)	11.8m Boom	19.8m Boom	27.88m Boom	35.9m Boom	44.0m Boom	48.0m Boom	52.0m Boom
2.5	70.0						
3.0	70.0	50.0					
3.5	70.0	50.0					
4.0	70.0	50.0	35.0				
4.5	70.0	50.0	35.0				
5.0	70.0	50.0	35.0	24.0			
6.0	60.2	50.0	35.0	24.0			
7.0	45.6	44.4	35.0	24.0	17.0	14.0	
8.0	34.8	33.7	33.3	24.0	17.0	14.0	12.0
9.0	27.8	26.6	26.3	24.0	17.0	14.0	12.0
10.0		21.7	21.3	23.2	17.0	14.0	12.0
12.0		15.1	14.7	16.4	17.0	14.0	12.0
14.0		10.9	10.6	12.2	13.0	13.4	12.0
16.0		8.1	7.7	9.2	10.1	10.4	10.6
18.0			5.6	7.1	7.9	8.2	8.4
20.0			3.8	5.3	6.2	6.5	6.7
22.0			2.2	3.9	4.8	5.1	5.4
24.0				2.7	3.6	3.9	4.2
26.0				1.7	2.7	3.0	3.2
28.0					1.9	2.2	2.4
30.0					1.1	1.5	1.8
Min, boom angle (°)	—	—	33	41	45	50	54
Standard hook	for 70 ton				for 50 ton		
Hook mass	900kg				600kg		
Parts of line	10	7	5			4	

(Unit: Metric ton)

Specification ND4 Outriggers intermediately extended (5.4m) over side, with 24ton or 16ton counterweight stowed in carrier							
Working radius (m)	11.8m Boom	19.8m Boom	27.88m Boom	35.9m Boom	44.0m Boom	48.0m Boom	52.0m Boom
2.5	70.0						
3.0	70.0	50.0					
3.5	70.0	50.0					
4.0	70.0	50.0	35.0				
4.5	67.7	50.0	35.0				
5.0	62.2	50.0	35.0	24.0			
6.0	42.2	41.0	35.0	24.0			
7.0	31.1	29.9	29.6	24.0	17.0	14.0	
8.0	24.1	23.0	22.7	24.0	17.0	14.0	12.0
9.0	19.4	18.3	18.0	19.8	17.0	14.0	12.0
10.0		14.9	14.5	16.2	17.0	14.0	12.0
12.0		10.2	9.9	11.4	12.2	12.5	12.0
14.0		7.2	6.9	8.3	9.1	9.4	9.6
16.0		5.1	4.7	6.1	6.9	7.1	7.4
18.0			3.0	4.5	5.2	5.5	5.7
20.0			1.4	3.1	4.0	4.2	4.4
22.0				2.0	2.9	3.2	3.4
24.0					1.9	2.2	2.5
Min, boom angle (°)	—	—	40	50	56	59	61
Standard hook	for 70 ton				for 50 ton		
Hook mass	900kg				600kg		
Parts of line	10	7	5			4	

(Unit: Metric ton)



Based on ISO 4305 / Not exceed 75% of static tipping loads

Specification ND5							
Outriggers intermediately extended (4.4m) over side, with 24ton or 16ton counterweight stowed in carrier							
Working radius (m)	11.8m Boom	19.8m Boom	27.88m Boom	35.9m Boom	44.0m Boom	48.0m Boom	52.0m Boom
2.5	70.0						
3.0	70.0	50.0					
3.5	70.0	50.0					
4.0	67.5	50.0	35.0				
4.5	52.0	50.0	35.0				
5.0	41.7	40.6	35.0	24.0			
6.0	29.3	28.2	27.9	24.0			
7.0	22.0	20.9	20.7	22.0	17.0	14.0	
8.0	17.2	16.2	15.9	17.6	17.0	14.0	12.0
9.0	13.8	12.8	12.5	14.1	14.9	14.0	12.0
10.0		10.3	10.0	11.5	12.3	12.6	12.0
12.0		6.8	6.5	7.9	8.7	9.0	9.2
14.0		4.5	4.2	5.5	6.2	6.5	6.7
16.0		2.6	2.1	3.8	4.5	4.8	5.0
18.0				2.3	3.2	3.5	3.7
Min, boom angle (°)	—	—	52	59	65	67	69
Standard hook	for 70 ton	for 50 ton					
Hook mass	900kg	600kg					
Parts of line	10	7	5	4			

(Unit: Metric ton)

NA
NB
NC
ND
NE

Specification ND6							
With retracted outriggers (3.4m) over side, with 24ton or 16ton counterweight stowed in carrier							
Working radius (m)	11.8m Boom	19.8m Boom	27.88m Boom	35.9m Boom	44.0m Boom	48.0m Boom	52.0m Boom
2.5	70.0						
3.0	70.0	50.0					
3.5	50.6	47.5					
4.0	38.5	37.3	32.9				
4.5	30.7	29.6	27.8				
5.0	25.2	24.2	23.8	23.4			
6.0	18.1	17.1	16.9	18.2			
7.0	13.6	12.7	12.4	14.0	14.3	14.0	
8.0	10.6	9.7	9.4	10.9	11.6	11.6	11.5
9.0	8.4	7.5	7.2	8.6	9.4	9.6	9.5
10.0		5.8	5.5	6.8	7.6	7.9	8.0
12.0		3.4	3.1	4.4	5.1	5.4	5.5
14.0		1.5					
Min, boom angle (°)	—	39	62	69	73	74	76
Standard hook	for 70 ton	for 50 ton					
Hook mass	900kg	600kg					
Parts of line	10	7	5	4			

(Unit: Metric ton)

With SL jib
Without SL jib

Based on ISO 4305 / Not exceed 75% of static tipping loads

Specification NE1 Outriggers fully extended (8.4m) 360° full range, with 8.5ton counterweight stowed in carrier or without counterweight							
Working radius (m)	11.8m Boom	19.8m Boom	27.88m Boom	35.9m Boom	44.0m Boom	48.0m Boom	52.0m Boom
2.5	70.0						
3.0	70.0	50.0					
3.5	70.0	50.0					
4.0	70.0	50.0	35.0				
4.5	70.0	50.0	35.0				
5.0	70.0	50.0	35.0	24.0			
6.0	60.2	50.0	35.0	24.0			
7.0	50.2	49.1	35.0	24.0	17.0	14.0	
8.0	41.1	39.9	35.0	24.0	17.0	14.0	12.0
9.0	32.9	31.7	31.4	24.0	17.0	14.0	12.0
10.0		26.0	25.6	24.0	17.0	14.0	12.0
12.0		18.4	18.0	19.8	17.0	14.0	12.0
14.0		13.4	12.9	14.9	15.8	14.0	12.0
16.0		9.6	9.1	10.9	11.9	12.3	12.0
18.0			6.5	8.2	9.1	9.5	9.8
20.0			4.6	6.1	7.1	7.4	7.7
22.0			2.9	4.4	5.5	5.8	6.1
24.0			1.4	3.1	4.1	4.5	4.8
26.0				2.0	3.0	3.4	3.7
28.0				1.2	2.1	2.5	2.7
30.0					1.4	1.7	2.0
Min, boom angle (°)	—	—	—	36	46	50	54
Standard hook	for 70 ton	for 50 ton					
Hook mass	900kg	600kg					
Parts of line	10	7	5	4			

(Unit: Metric ton)

Specification NE2 Outriggers intermediately extended (7.4m) over side, with 8.5ton counterweight stowed in carrier or without counterweight							
Working radius (m)	11.8m Boom	19.8m Boom	27.88m Boom	35.9m Boom	44.0m Boom	48.0m Boom	52.0m Boom
2.5	70.0						
3.0	70.0	50.0					
3.5	70.0	50.0					
4.0	70.0	50.0	35.0				
4.5	70.0	50.0	35.0				
5.0	70.0	50.0	35.0	24.0			
6.0	60.2	50.0	35.0	24.0			
7.0	49.4	48.1	35.0	24.0	17.0	14.0	
8.0	36.5	35.3	34.6	24.0	17.0	14.0	12.0
9.0	28.5	27.3	26.9	24.0	17.0	14.0	12.0
10.0		21.8	21.4	23.5	17.0	14.0	12.0
12.0		14.8	14.4	16.2	17.0	14.0	12.0
14.0		10.5	10.1	11.8	12.7	13.0	12.0
16.0		7.6	7.2	8.8	9.7	10.0	10.2
18.0			5.1	6.6	7.5	7.8	8.0
20.0			3.2	4.8	5.7	6.1	6.3
22.0			1.7	3.4	4.3	4.7	4.9
24.0				2.3	3.2	3.5	3.8
26.0				1.2	2.2	2.6	2.8
28.0					1.4	1.8	2.1
Min, boom angle (°)	—	—	33	41	49	53	57
Standard hook	for 70 ton	for 50 ton					
Hook mass	900kg	600kg					
Parts of line	10	7	5	4			

(Unit: Metric ton)



Based on ISO 4305 / Not exceed 75% of static tipping loads

Specification NE3 Outriggers intermediately extended (6.4m) over side, with 8.5ton counterweight stowed in carrier or without counterweight							
Working radius (m)	11.8m Boom	19.8m Boom	27.88m Boom	35.9m Boom	44.0m Boom	48.0m Boom	52.0m Boom
2.5	70.0						
3.0	70.0	50.0					
3.5	70.0	50.0					
4.0	70.0	50.0	35.0				
4.5	70.0	50.0	35.0				
5.0	66.3	50.0	35.0	24.0			
6.0	51.6	50.0	35.0	24.0			
7.0	36.5	35.1	33.0	24.0	17.0	14.0	
8.0	27.6	26.3	25.9	24.0	17.0	14.0	12.0
9.0	21.8	20.5	20.2	21.7	17.0	14.0	12.0
10.0		16.4	16.1	18.0	17.0	14.0	12.0
12.0		11.1	10.7	12.4	13.3	13.4	12.0
14.0		7.7	7.3	8.9	9.8	10.1	10.2
16.0		5.3	4.9	6.4	7.3	7.6	7.8
18.0			2.8	4.4	5.4	5.7	6.0
20.0			1.2	3.0	3.9	4.2	4.5
22.0				1.8	2.7	3.0	3.3
24.0						2.1	
Min, boom angle (°)	—	—	40	50	58	59	64
Standard hook	for 70 ton	for 50 ton					
Hook mass	900kg	600kg					
Parts of line	10	7	5	4			

(Unit: Metric ton)

NA

NB

NC

ND

NE

Specification NE4 Outriggers intermediately extended (5.4m) over side, with 8.5ton counterweight stowed in carrier or without counterweight							
Working radius (m)	11.8m Boom	19.8m Boom	27.88m Boom	35.9m Boom	44.0m Boom	48.0m Boom	52.0m Boom
2.5	70.0						
3.0	70.0	50.0					
3.5	70.0	50.0					
4.0	70.0	50.0	35.0				
4.5	66.8	50.0	35.0				
5.0	51.1	49.7	35.0	24.0			
6.0	34.0	32.7	31.2	24.0			
7.0	24.7	23.6	23.3	24.0	17.0	14.0	
8.0	19.0	17.9	17.6	19.4	17.0	14.0	12.0
9.0	15.0	14.0	13.6	15.3	15.9	14.0	12.0
10.0		11.1	10.8	12.4	13.3	13.4	12.0
12.0		7.3	6.9	8.4	9.2	9.5	9.8
14.0		4.8	4.4	5.8	6.6	6.9	7.1
16.0		2.9	2.4	4.0	4.8	5.0	5.3
18.0				2.4	3.4	3.7	3.9
Min, boom angle (°)	—	—	52	58	65	67	69
Standard hook	for 70 ton	for 50 ton					
Hook mass	900kg	600kg					
Parts of line	10	7	5	4			

(Unit: Metric ton)

With SL jib

Without SL jib

Specification NE5 Outriggers intermediately extended (4.4m) over side, with 8.5ton counterweight stowed in carrier or without counterweight							
Working radius (m)	11.8m Boom	19.8m Boom	27.88m Boom	35.9m Boom	44.0m Boom	48.0m Boom	52.0m Boom
2.5	70.0						
3.0	70.0	50.0					
3.5	70.0	50.0					
4.0	55.7	49.1	35.0				
4.5	42.4	40.3	34.0				
5.0	33.9	32.5	28.8	24.0			
6.0	23.4	22.2	21.3	21.4			
7.0	17.3	16.2	15.9	16.8	16.6	14.0	
8.0	13.3	12.2	11.9	13.5	13.5	13.4	12.0
9.0	10.5	9.4	9.1	10.7	11.1	11.1	11.0
10.0		7.4	7.0	8.5	9.2	9.2	9.2
12.0		4.5	4.1	5.5	6.3	6.4	6.5
14.0		2.3		3.5	4.2	4.4	4.5
Min, boom angle (°)	—	39	62	65	70	72	73
Standard hook	for 70 ton	for 50 ton					
Hook mass	900kg	600kg					
Parts of line	10	7	5	4			

(Unit: Metric ton)

Specification NE6 With retracted outriggers (3.4m) over side, with 8.5ton counterweight stowed in carrier or without counterweight				
Working radius (m)	11.8m Boom	19.8m Boom	27.88m Boom	35.9m Boom
2.5	70.0			
3.0	59.7	48.7		
3.5	41.8	38.4		
4.0	31.6	30.4	26.0	
4.5	25.0	23.9	21.7	
5.0	20.4	19.3	18.4	18.3
6.0	14.4	13.4	13.2	13.8
7.0	10.6	9.7	9.4	10.6
8.0	8.1	7.1	6.9	8.2
9.0	6.2	5.3	5.0	6.3
10.0		3.9		4.8
12.0		1.5		
Min, boom angle (°)	—	48	69	72
Standard hook	for 70 ton	for 50 ton		
Hook mass	900kg	600kg		
Parts of line	10	7	5	4

(Unit: Metric ton)