

Extreme operator-friendliness and shaped hardness.

 Assurance that IHI excavators are environment-conscious.

30VX³



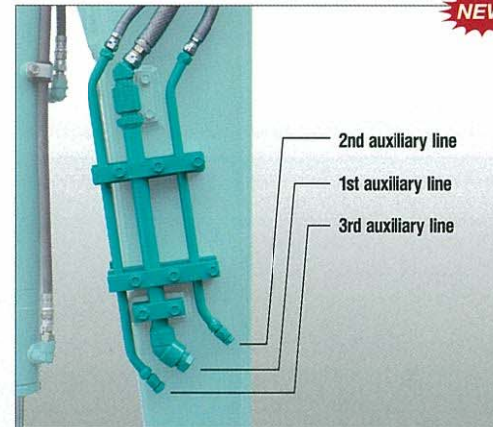
Operability

■ Newly designed operator's space



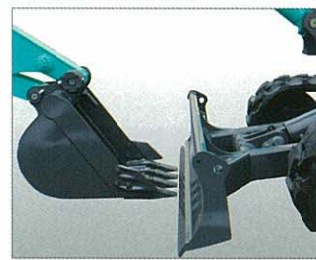
The new cockpit ensures safe and comfortable operations.
* See Page 26 for details.

■ Additional auxiliary hydraulic lines (optional)



In addition to the conventional auxiliary hydraulic line, two more lines are now available for versatile hydraulic attachments, enabling you to handle a wider range of hydraulic attachments.
* See Page 27 for details.

■ Close distance between bucket and blade



Close proximity of the bucket and dozer blade makes skimming and excavation work easier.

■ Large-size blade makes ground-leveling work easier

Easy Maintenance

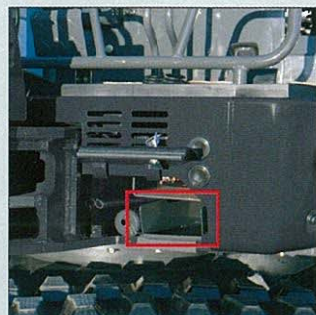
■ Segmented blade cylinder hose design makes replacement easier



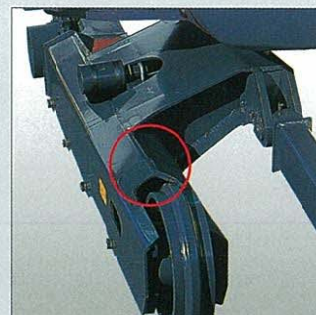
■ Segmented boom cylinder hose design makes replacement easier



■ Easy accessible tool box



■ Angled crawler frame



The angled crawler frame not only prevents dirt build-up but also simplifies cleaning and maintenance.

- Wide, fully opening engine-cover enables ease of maintenance
- Filters are conveniently located, making it easy to replace them
- Sintered bushes create longer interval for greasing
- Corrosion-free, resin fuel-tank

Durability



NEW

■ Warranted, highly durable rubber shoe comes as standard equipment

Like no others in the industry, the rubber shoe is warranted for either 2 years or 1,500 hours against steel cord cut-off.
* See Page 27 for details.

■ New castle-nut design reduces horizontal tolerance



NEW

The arm-end and boom-arm joint are fixed with castle nuts. The reduction of horizontal tolerance is achieved.
* See Page 27 for details.

■ Highly durable blades made even stronger



NEW

■ Embedded boom center working lights



NEW

■ Bucket cylinder hose built inside the arm

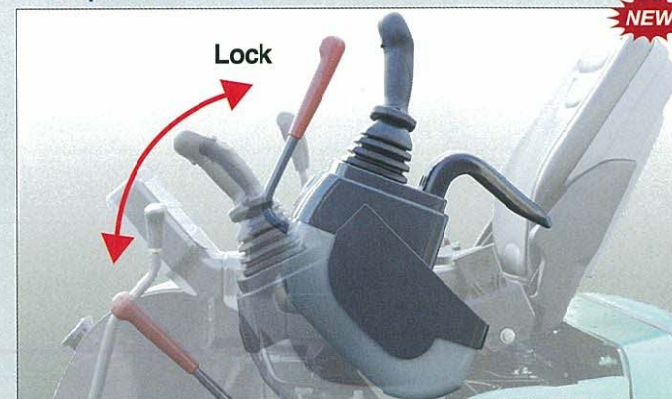


* See Page 27 for details.

- Durable, anti-corrosive aluminum radiator
- Rugged steel-pressed engine cover

Safety

■ Gate lock system as standard equipment is designed to block up all operations



NEW

The master gate lock system enables you to block up all functions such as boom, arm, bucket, swing, boom swing, travel and blade.

■ 4-Post canopy (ROPS) as standard equipment



■ Neutral engine start system.

The engine can start when the gate-lock is pulled up to avoid mis-operations.

■ Swing motor with auto parking brake

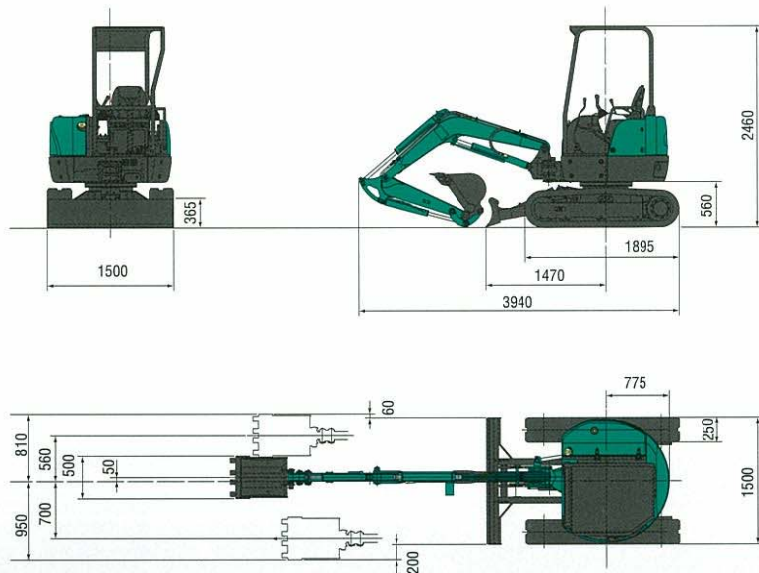
Featuring swing motor with an auto parking brake, the machine can be swung and locked at any position within a 360° circumference.

25VX³ Mini Excavator

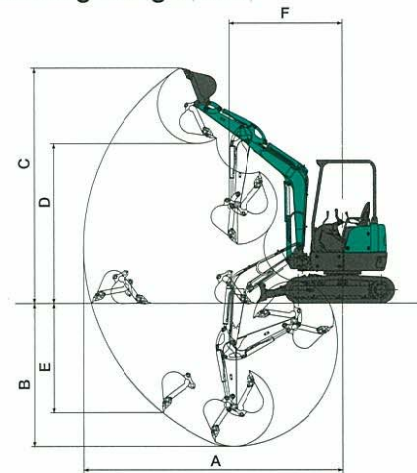
Standard Bucket Capacity : ISO 0.08m³



■ Dimensions (Unit:mm)



■ Working Range (Unit:mm)



	4-Post or Cabin	2-Post canopy
A Max. digging radius	4500 (4750)	4500 (4750)
B Max. digging depth	2520 (2820)	2520 (2820)
C Max. digging height	4050 (4280)	4560 (4830)
D Max. dumping height	2750 (2970)	3200 (3470)
E Max. vertical digging depth	1950 (2220)	1950 (2220)
F Min. front turning radius	1940 (2040)	1640 (1830)
At right boom swing	1510 (1600)	1260 (1410)

※ (): Figures for long arm

■ 25VX3 Specifications

Performance		Boom swing system	
Bucket capacity	0.08m ³	Type	Boom offset with hydraulic cylinder
Bucket width	500mm	Swing angle (L/R)	90°/50°
Operating weight: 4-Post(Cabin)	2555kg (2655kg)	Hydraulic system	
Transportation weight: 4-Post(Cabin)	2480kg (2580kg)	Pressure	20.6MPa (210kgf/cm ²), 18.1MPa (185kgf/cm ²)
Swing speed	10min ⁻¹	Pump hydraulic flow	29.9L/min×2+19.8L/min
Travel speed (low/high)	2.3/4.5km/h	Dozer blade	
Gradeability	58% (30°)	Size	1550mm×365mm
Ground pressure	27kPa (0.28kgf/cm ²)	Lift above ground / Drop below ground	370mm/390mm
Max bucket digging force	19.6kN (2000kgf)	Max auxiliary flow	
Engine		1st line	48L/min
Model	YANMAR 3TNV76		
Rated output	13.5kW/2300min ⁻¹ (18.4PS/2300 rpm)		
Fuel tank capacity	35L		

■ Options

- Bucket *without side cutter
- *0.04m³/Digging bucket (250mm width)
- *0.05m³/Digging bucket (320mm width)
- 0.06m³/Long arm bucket (400mm width)
- 0.07m³/Digging bucket (450mm width)
- 0.09m³/Loading bucket (550mm width)
- 1st auxiliary piping
- 3rd auxiliary piping
- 2-Post canopy
- Steel cabin
- Rubber pad for steel shoe
- Long arm (standard +300mm)
- Steel shoe (300mm)

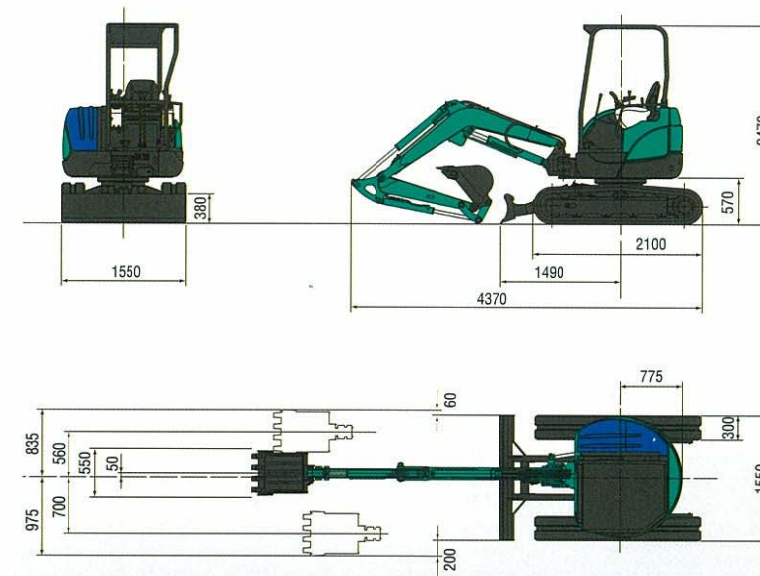


30VX³ Mini Excavator

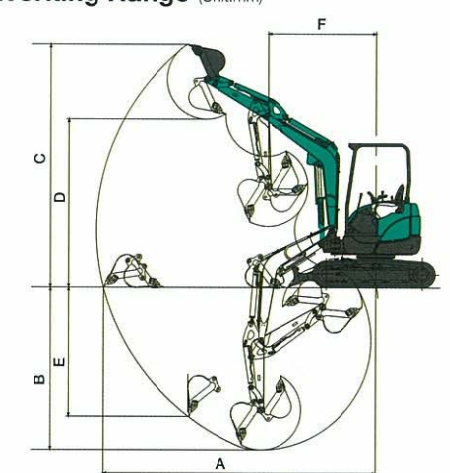
Standard Bucket Capacity : ISO 0.09m³



■ Dimensions (Unit:mm)



■ Working Range (Unit:mm)



	4-Post or Cabin	2-Post canopy
A Max. digging radius	4800 (5080)	4800 (5080)
B Max. digging depth	2900 (3200)	2900 (3200)
C Max. digging height	4170 (4320)	4840 (5070)
D Max. dumping height	2880 (3040)	3480 (3700)
E Max. vertical digging depth	2300 (2570)	2300 (2570)
F Min. front turning radius	2200 (2200)	1700 (1820)
At right boom swing	1730 (1730)	1340 (1410)

※ (): Figures for long arm

■ 30VX3 Specifications

Performance		Boom swing system	
Bucket capacity	0.09m ³	Type	Boom offset with hydraulic cylinder
Bucket width	550mm	Swing angle (L/R)	90°/50°
Operating weight: 4-Post(Cabin)	3075kg (3175kg)	Hydraulic system	
Transportation weight: 4-Post(Cabin)	3000kg (3100kg)	Pressure	21.6MPa (220kgf/cm ²), 20.6MPa (210kgf/cm ²)
Swing speed	9.2min ⁻¹	Pump hydraulic flow	34.1L/min×2+19.8L/min
Travel speed (low/high)	2.5/4.8km/h	Dozer blade	
Gradeability	58% (30°)	Size	1550mm×380mm
Ground pressure	28kPa (0.28kgf/cm ²)	Lift above ground / Drop below ground	360mm/410mm
Max bucket digging force	26.5kN (2700kgf)	Max auxiliary flow	
Engine		1st line	54L/min
Model	YANMAR 3TNV84	2nd line	19L/min
Rated output	17.8kW/2200min ⁻¹ (24.2PS/2200rpm)		
Fuel tank capacity	40L		

■ Options

- Bucket
- *0.04m³/Digging bucket (250mm width)
- *0.05m³/Digging bucket (320mm width)
- 0.06m³/Digging bucket (400mm width)
- 0.07m³/Long arm bucket (450mm width)
- 0.08m³/Digging bucket (500mm width)
- 0.10m³/Loading bucket (600mm width)
- 1st auxiliary piping
- 2nd auxiliary piping
- 3rd auxiliary piping
- 2-Post canopy
- Steel cabin
- Long arm (standard +300mm)
- Steel shoe (300mm)
- Additional counterweight (200kg)
- Rubber pad for steel shoe

