

SR-500L



<http://www.kato-works.co.jp>

- Before you use the crane, study the instruction manual thoroughly and follow the instructions it contains.
- Some differences may arise between the machine delivered and the photographs in the catalog due to the country the crane will be used in or any added improvements.
Note : The specification may be changed without notice.
- The actual colors of the body and interior may appear slightly different from those shown in this catalogue due to the limitations of photography and printing.

● Contact for enquiry:

KATO KATO WORKS CO.,LTD.
 QUALITY & EXPERIENCE
 SINCE 1895



Obtained authentication of International Specification ISO9001 for quality assurance.

C04121
 3.2016-3000(FB)1 Printed in Japan

SR-500L

9-37, Higashi-oh 1-chome, Shinagawa-ku, Tokyo, 140-0011, Japan / Tel.: Head Office: Tokyo (03) 3458-1111 Overseas Marketing Department: Tokyo (03) 3458-1115 / FAX: Tokyo (03) 3458-1153

SR-500L

Rough Terrain Crane

Maximum lifting capacity: 51t×2.5m
 Maximum boom length: 35.0m
 Engine output: 200kW/2,600min⁻¹(Net)



KATO

SR-500L

*Powerful lifting
Tough design
Various
operation*

- Stable operation by high quality rigid-structure
- Safety design for operator
- Tire type is selectable
- 4-section 35.0m SUPERBOOM
- 2-section 15.2m manual jib
- Total vehicle weight is less than 34t
- LWH: 13,030 × 2,980 × 3,595 (mm)
- Reliable Mitsubishi 6M60-TL engine
- K·COR
(KATO Crane Operation Recorder) is adopted



Strong and smooth lifting

4-section round-shaped SUPERBOOM

Simultaneous extension / retraction for various operations.

- **Boom lifting capacity** **SUPERBOOM**
- Maximum lifting capacity.....**51t×2.5m**
- Boom length.....**10.7m~35.0m**
- Boom derricking angle.....**-1°~82°**
- Maximum lifting height (Boom).....**35.6m**

2-section manual jib

Boom side stow type. Easy and safe jib operation.

- **Manual jib lifting capacity**
- Maximum lifting capacity.....**5.0t×75°**
- Jib length.....**8.8m, 15.2m**
- Jib offset angle.....**5°, 25°, 45°**
- Maximum lifting height (Boom+Jib).....**51.0m**

34t GVW

GVW is 33,970kg with radial tire. Tow hooks are equipped on the front and rear ends. Enable to transport efficiently.



GVW : 33,970 kg *At radial tire traveling position.



For various operation



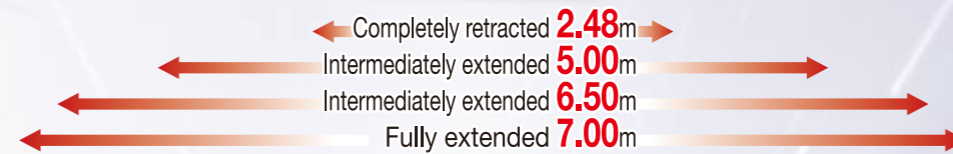
Balloon tire is selectable

Balloon tire (option) secure stable travelling at off-road ground.

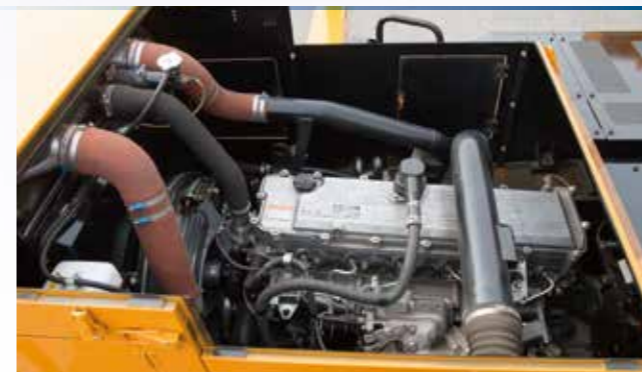


4-position outriggers

Ensure safe and stable operation by 4-position outriggers.



Reliable Mitsubishi engine



- **Model: Mitsubishi 6M60-TL**
(Electronically controlled Common-rail type)
- Piston displacement.....**7.545L**
- Max Power.....**200kW / 2,600min⁻¹**
- Max Torque.....**785N·m / 1,400min⁻¹**

Comfortable operator's cabin



New ACS with colorful display



- Emergency switch
- ACS display
- Camera monitor (option)
- Right side mirror

K-COR (KATO Crane Operation Recorder) (option)

Records working status of crane. Record can retrieve by SD Card.



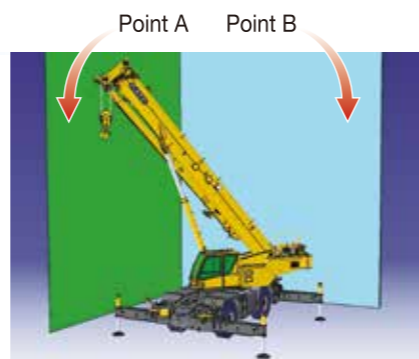
User safety by latest KATO ACS

● 2-points working range limiting function

Operator is enable to avoid contact accident by setting 2 vertical surface working range limit.

● Load factor limiting function

Available to control load factor between 80% to 100% of rated-lifting-capacity to keep a bigger safety margin.



Global standard safety devices

Good access to cab and crane structure with steady steps and handles. Safety cameras to prevent operator from accident.

