

SR-300LX



<http://www.kato-works.co.jp>

- Before you use the crane, study the instruction manual thoroughly and follow the instructions it contains.
- Some differences may arise between the machine delivered and the photographs in the catalog due to the country the crane will be used in or any added improvements.
Note : The specification may be changed without notice.
- The actual colors of the body and interior may appear slightly different from those shown in this catalogue due to the limitations of photography and printing.

● Contact for enquiry:

KATO

KATO WORKS CO.,LTD.

QUALITY & EXPERIENCE
SINCE 1895

SR-300LX

9-37, Higashi-ohi 1-chome, Shinagawa-ku, Tokyo, 140-0011, Japan / Tel.: Head Office: Tokyo +81 (0)3 3458-1111 Overseas Marketing Department: Tokyo +81 (0)3 3458-1115 / FAX: Tokyo +81 (0)3 3458-1163

SR-300LX

Rough Terrain Crane

Maximum lifting capacity: 30t × 3.0m

Maximum boom length: 30.5m



KATO

SR-300LX

Strong powerful round-shaped boom High performance KATO Rough Terrain Crane

4-section 30.5m long Boom



● Boom lifting capacity

SUPERBOOM

- Maximum lifting capacity..... 30t×3.0m
- Boom length..... 9.35m~30.5m
- Maximum lifting height..... 31.2m
- Boom derricking angle..... 0°~83°
- Maximum lifting capacity at maximum boom length..... 7.5t

5-position outriggers

The 5-position outriggers ensures safe and stable operation. These various outrigger positions accommodates for a wide range of worksites and further improves performance, especially in constricted areas.



- ← Completely retracted 2.31m →
- ← Intermediately extended 3.80m →
- ← Intermediately extended 5.00m →
- ← Intermediately extended 6.00m →
- ← Fully extended 6.60m →

30.5m

30.5m

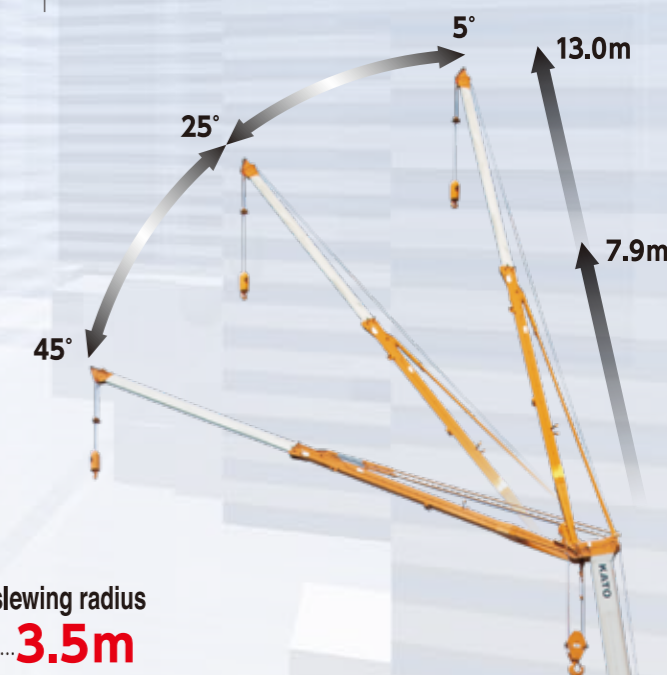
9.35m

83°

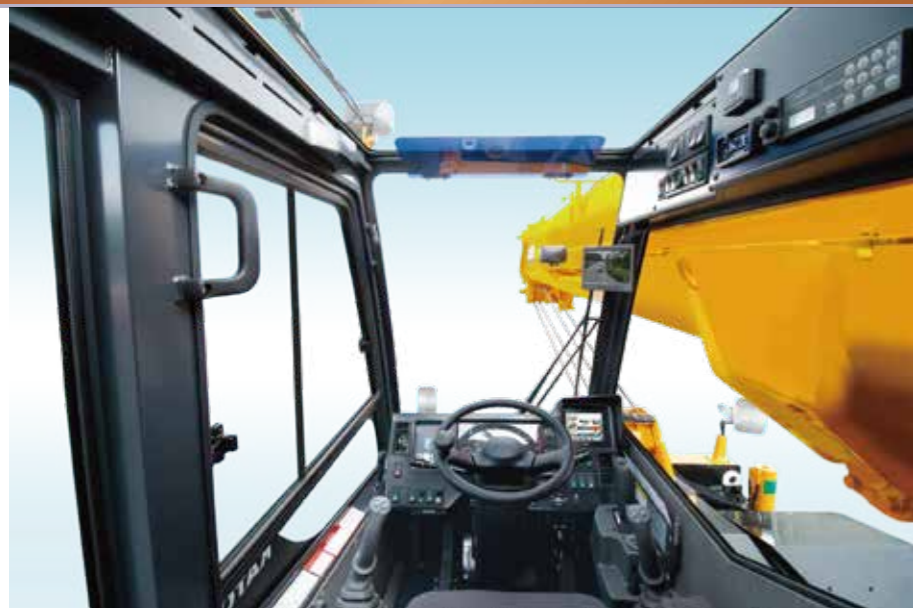
2-section 13.0m Fly Jib

● Jib lifting capacity

- Maximum lifting capacity..... 3.5t×75°
- Jib length..... 7.9m-13.0m
- Maximum lifting height..... 44.8m
- Jib offset angle..... 5°, 25°, 45°



■ Tail slewing radius
..... 3.5m



ACS moment limiter now with high resolution display

- A range of limiting functions to increase safety during operation.



Working range limit

- The working range limitation can be set up from working radius, slewing angle, height and boom angle.



▲ Slewing lock pin lever



▲ Main & aux. winch switch misoperation prevention



◀ Shift lever, level gauge and rear steering lever



▲ Magazine rack



▲ Speaker



▲ Room light



Console

- Armrest with tele. Easier boarding thanks to larger tilting angle.



Adjustable sun shade

- The sun shade cuts the sun light completely. This is useful to the operator by confirming lifting operation outside of the cabin clearly.



K-COR

- The K-COR is data logger system which records working status of crane. Data is extractable by the SD card and can be confirmed through K-COR program.



- It secures a wider and clear right view due to having the boom derrick cylinder mounted towards the rear.



Sun visor ▶



Advanced safety traveling features

Side View Camera (Right) (Option)

Aids to secure visibility that is difficult to confirm by direct-viewing from the cab.



▲ Side view camera (Right)



Rear View Camera (Option)

Assist in securing rearward visibility when reversing. This improves safety and maneuverability.



▲ Rear View Camera



Progressive features



▲ Working light



▲ LED type ACS outside indicator (option)



▲ Side step



▲ Working light (boom)



▲ LED head light



▲ Anemometer (option)



▲ Side view camera (Right)(option)



▲ Working light (cab)



▲ Side mirror



▲ Side turn signal lamp



▲ Side step for left front



▲ Winch view camera (option)



▲ Outrigger control panel



▲ Tool box storage



▲ Slewing warning lamp (option)



▲ Side step for left rear



▲ Rear view camera (option)
▲ Yellow rev light (option)



▲ Combination rear light

General Dimensions

GVW : 26,990 kg



Reliable Mitsubishi engine

● Model: Mitsubishi 6M60-TL
(Electronically controlled Common-rail type)

- Piston displacement..... 7.545L
- Max power..... 200kW / 2,600min⁻¹
- Max torque..... 785N·m / 1,400min⁻¹