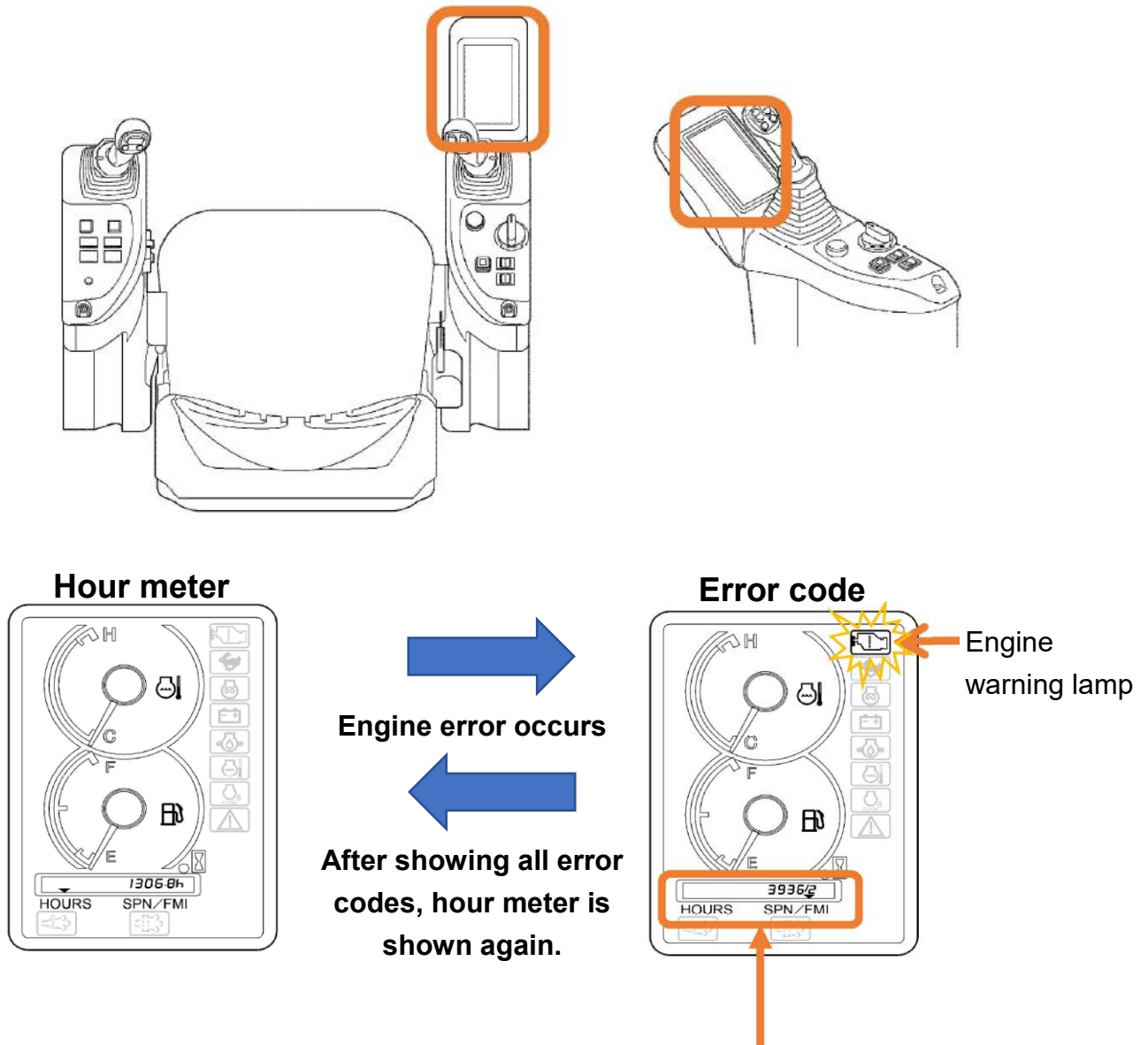


How to check engine error codes

- SPN/FMI error code will be shown on hour meter display when engine error occurs.



Hour meter

When the ▼ mark points to HOURS, this meter indicates the accumulative running time in units of 1/10 hours.

Engine error code

The engine warning indicator turns on and the error code appears. The error code remains indicated until the trouble cause is solved. If multiple errors occur, the codes appear alternately about every three seconds.

