

SR-700LII



SR-700LII

9-37, Higashi-ohi 1-chome, Shinagawa-ku, Tokyo, 140-0011, Japan / Tel.: Head Office: Tokyo +81 (0)3 3458-1111 Overseas Marketing Department: Tokyo +81 (0)3 3458-1115 / FAX: Tokyo +81 (0)3 3458-1163

SR-700LII

Rough Terrain Crane

Maximum lifting capacity: 70t × 2.5m

Maximum boom length: 44.5m



Web site
kato-works.co.jp



YouTube / KATO WORKS OFFICIAL
youtube.com/user/katowork



Instagram
instagram.com/kato_works_official/



- Before you operate the machine, study the instruction manual thoroughly and follow the instructions it contains.
- Some differences may arise between the machine delivered and the photographs in the catalog due to any added improvements.
Note: The specification may be changed without notice.
- The actual colors of the body and interior may appear slightly different from those shown in this catalog due to the limitation of photography and printing.

● Contact for enquiry:

KATO

QUALITY & EXPERIENCE
SINCE 1895

KATO WORKS CO.,LTD.

9-37, Higashi-ohi 1-chome, Shinagawa-ku, Tokyo, 140-0011, Japan
Tel.: Head Office: Tokyo +81 (0)3 3458-1111
Overseas Marketing Department: Tokyo +81 (0)3 3458-1115 / FAX: Tokyo +81 (0)3 3458-1163
<https://www.kato-works.co.jp>

KATO

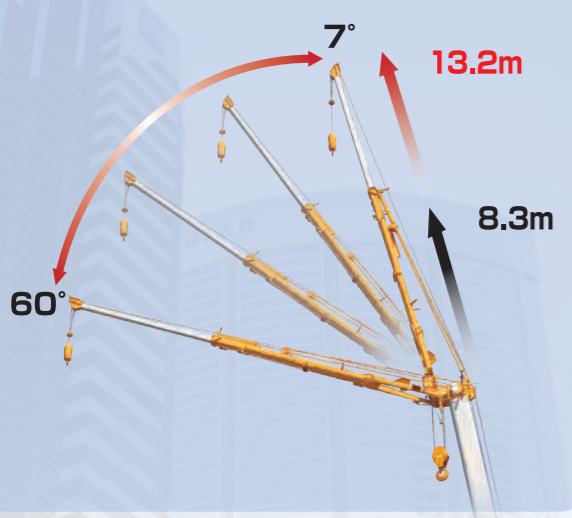
Powerful & Reliable 6 section SUPERBOOM and 2 section SL jib

◆ Boom lifting capacity **SUPERBOOM**

- Boom type..... 6-section round shaped full power boom
- Maximum lifting capacity..... **70t x 2.5m**
- Boom length..... **10.0m ~ 44.5m**
- Maximum lifting height..... **45.5m**

◆ Jib lifting capacity

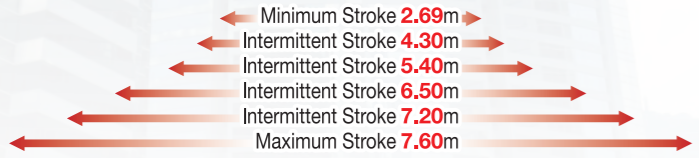
- Jib type..... 2-section hydraulic luffing power jib
- Maximum lifting capacity..... **4t x 75°**
- Jib length..... **8.3m ~ 13.2m**
- Maximum lifting height..... **58.6m**
- Jib offset angle..... **7° ~ 60°**



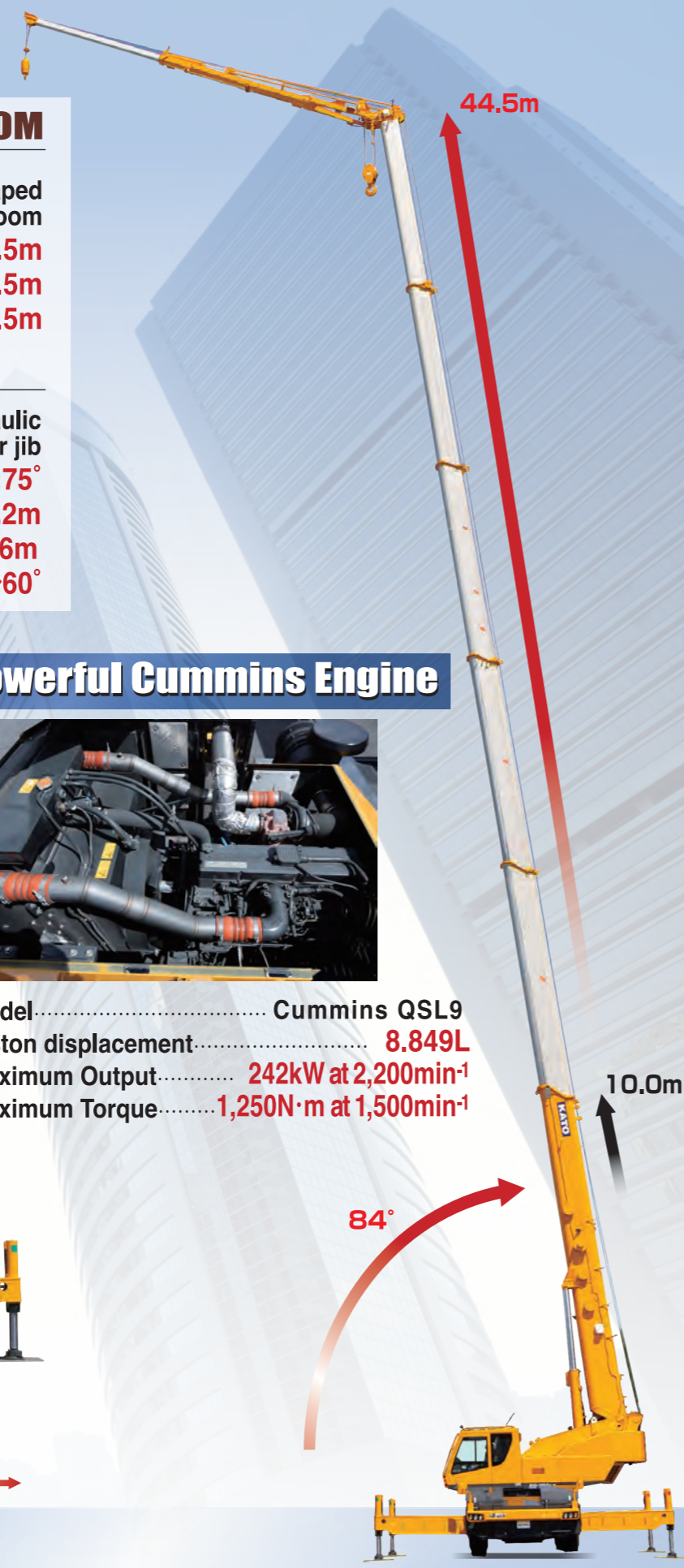
Powerful Cummins Engine



- Model..... Cummins QSL9
- Piston displacement..... **8.849L**
- Maximum Output..... **242kW at 2,200min⁻¹**
- Maximum Torque..... **1,250N·m at 1,500min⁻¹**



Outrigger Width



Comfortable operator's cabin



7-inch Monitor
 ● A 7-inch monitor is installed when either the right-side view camera, rear-view camera, winch view camera, or a combination of these is installed.



◀ Liquid crystal display cluster meter (At view while traveling)
 (Driving mode)

Touch screen control ACS moment limiter

A range of limiting functions to increase Safety during Operation.



▲ Sun Visor



▲ Emergency engine stop switch



▲ USB socket



Load factor limit
 ● It limits the load factor to 80% ~ 100% of the rated lifting capacity and keep a safe margin.

Working range limit
 ● It limits the 2 vertical surface range and avoid collision.



▲ Rear view camera & Yellow rev light (option)



▲ Winch view camera(option)



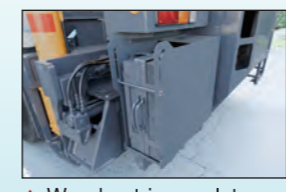
▲ Anemometer(option)



▲ LED type ACS outside indicator(option)



▲ Right side view camera (option)



▲ Wood outrigger plate and storage(option)



All new bumper design

● LED head light with Hi and Lo selector

