



HD823_{MR}-8
series



REGZAM
NEXT GENERATION EXCAVATOR

HD823_{MR}-8
REGZAM HYDRAULIC EXCAVATOR

<https://www.kato-works.co.jp> >



YouTube >



Instagram >



NOTE : Illustrations may include optional equipment. KATO products and specifications are subject to improvements and changes without notice. Mentioned figures are approximate.
Bluetooth® is a registered trademark of Bluetooth SIG, Inc.
However, trademarks of respective companies will be fully respected even if they are not specifically marked.

● Contact for enquiry:

KATO

QUALITY & EXPERIENCE
SINCE 1895

KATO WORKS CO.,LTD.

9-37, Higashi-ohi 1-chome, Shinagawa-ku, Tokyo 140-0011, Japan.
Tel. : Head Office Tokyo(03)3458-1111
Overseas Marketing Department Tokyo(03)3458-1115
Fax. : Tokyo(03)3458-1163

C06101
10.2024-500(OS)1



*Piping for breakers and crushers is an optional feature.

KATO

Eco-Friendly Machine Evolves with Greater Strength

New engine to pass EU Stage V and EPA Final Tier4



Emission Gas Aftertreatment Unit (DOC+DPF+SCR) significantly reduces PM and NOx, making the exhaust gas cleaner.

Large Capacity DEF Tank

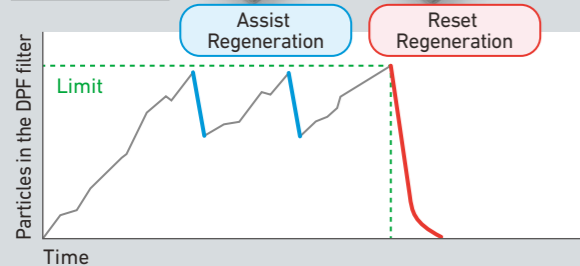
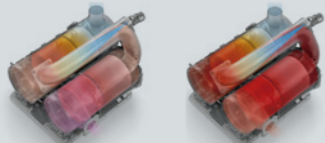
With a sizeable 55-liter tank capacity, you only need to refill the DEF once for every 2 fuel refills*. The tank is conveniently located in an easily accessible toolbox, making refilling operations easier.

*May vary depending on conditions.

Unique DPF Regeneration Controls

With the 3-step regeneration control, the DPF filter achieves reliable regeneration without interrupting work and fuel efficiency.

DPF Temperature Graph
*Actual temperature may vary



DPF Maintenance Cycle

Filter change : every 9000 hours
Filter cleaning : every 4500 hours or 3 years

2-stage Turbo Charger

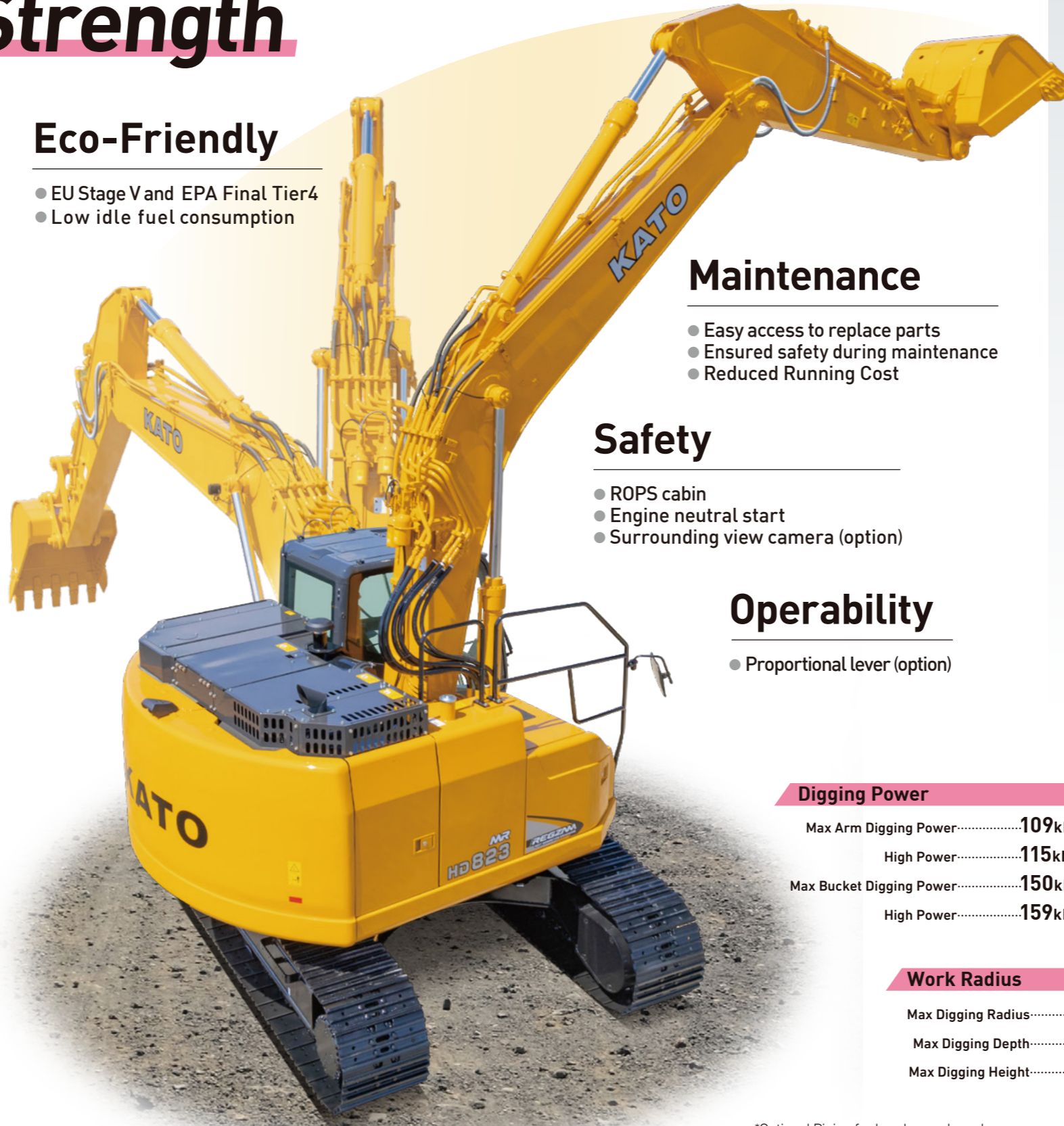
It meets demanding workloads while significantly reducing fuel consumption

Equipped with two large and small turbochargers, it utilizes turbocharging from low RPM ranges, enabling it to deliver enough torque.



Eco-Friendly

- EU Stage V and EPA Final Tier4
- Low idle fuel consumption

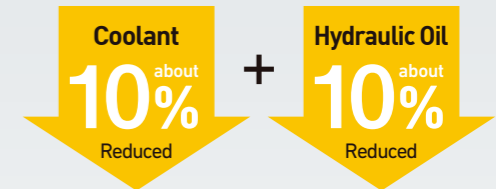


Comfortability

- Mechanical suspension seat
- Standard seat heater
- More equipment for more operability
- Pressurized cabin

High-performance Sound Absorption Materials and Airflow Achieves Ultra-low Noise Levels

Reduced Running Cost



The quantity of coolant and hydraulic oil was reduced by 10%, lowering their running costs.

Maintenance

- Easy access to replace parts
- Ensured safety during maintenance
- Reduced Running Cost

High-Durability Bucket Structure

Featuring a plate structure to prevent wear at welding points. The side plate thickness is increased to achieve high durability. The bucket comes with shims to fit perfectly with the arm.

Safety

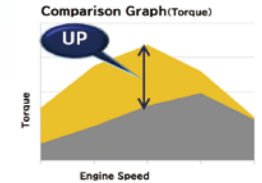
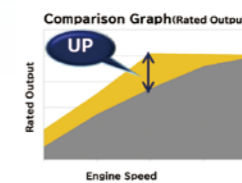
- ROPS cabin
- Engine neutral start
- Surrounding view camera (option)

Operability

- Proportional lever (option)

Evolved Operation Smoothness

The new engine provides better overall output and torque in all rev ranges. Dig like a hot knife through butter, smooth and powerful.



Digging Power

| | |
|-------------------------------|-------|
| Max Arm Digging Power..... | 109kN |
| High Power..... | 115kN |
| Max Bucket Digging Power..... | 150kN |
| High Power..... | 159kN |

Work Radius

| | |
|-------------------------|---------|
| Max Digging Radius..... | 9,930mm |
| Max Digging Depth..... | 6,700mm |
| Max Digging Height..... | 9,830mm |

*Optional Piping for breaker and crushers

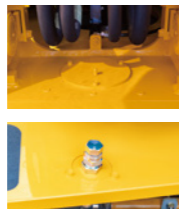


Layout for Easy Maintenance



Cabin Maintenance Door

Easy to replace A/C filters and washer fluid.



Remote Grease Application

The slewing motor's grease application is done through a remote hole.

Above: Grease resupply hole
Below: Oil resupply hole



Battery Disconnect Switch

If the DEF Return Indicator is on, do not disconnect the battery because DEF hasn't fully returned.



Fuel Tank Drain Hose

More accessible water drain for the fuel tank.



DEF Resupply

Redesigned the DEF tank for easier DEF resupply.



Large Air Cleaner

An optional pre-cleaner is also available.



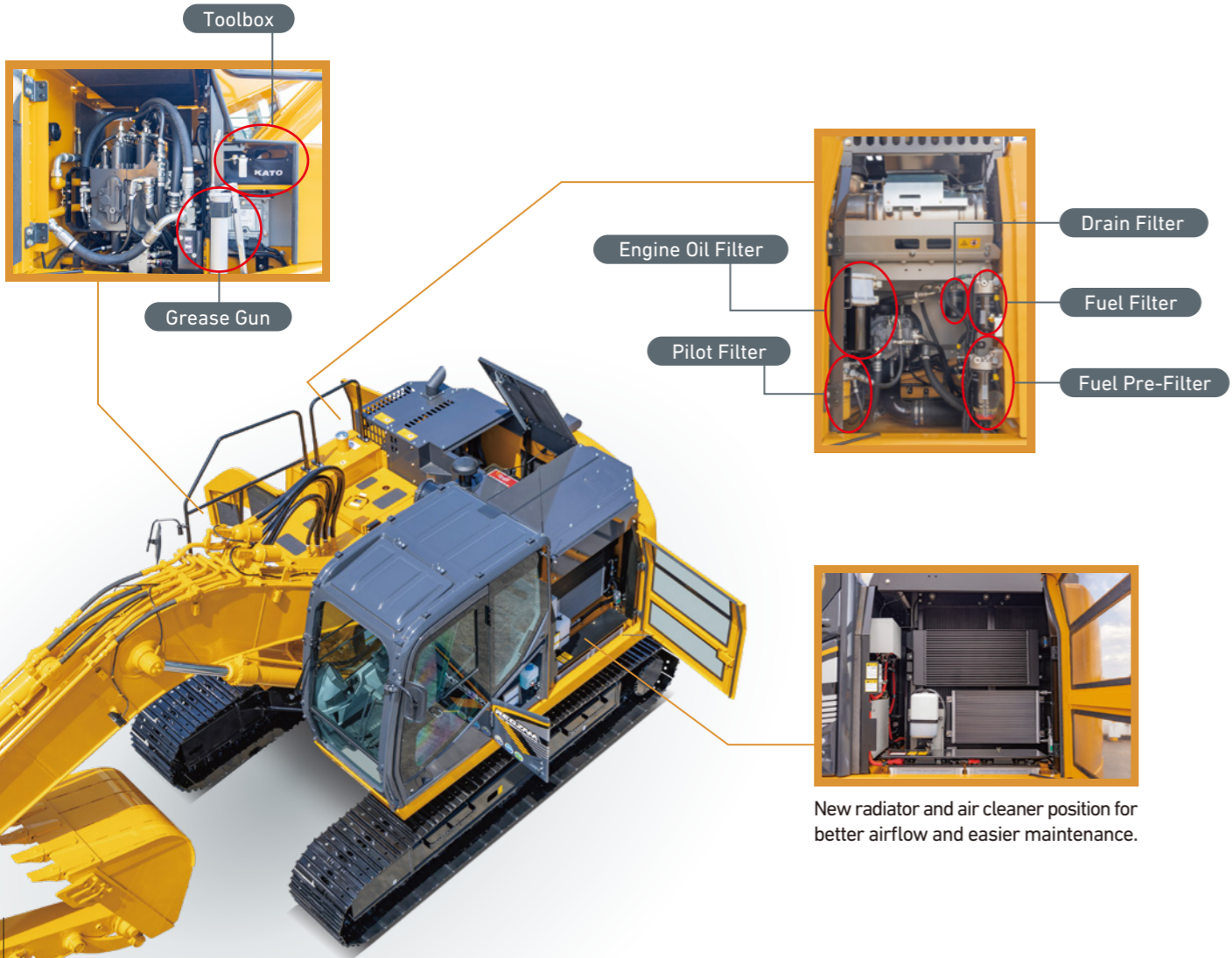
New Side Cover

A netting is added to the cover for easy cleaning.

Other Equipment

- Firewall
- Large Handrails
- Fuel Filter Wrench (Option)

- Fan Guard
- Foldable Side Mirror
- LED Working Lights (Right side of the boom, in front of the toolbox)
- LED Working Lights Above the Cabin (Option)



Equipment that Fits Your Needs



Standard Cabin

KATO achieves a robust yet sleek cabin design through its unique thick-walled irregular pipe and thick plate box structure. It complies with ROPS standards. Additionally, polycarbonate is standardly used for the door windows, further ensuring a safe operator environment.



Demolition Cabin (Option)

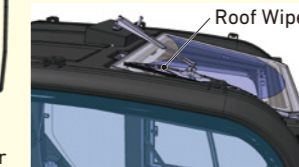
A robust cabin is achieved with a cab guard and a dedicated thick-walled steel pipe frame for demolition. (Cabin and guard rails have not obtained the CE certificate, nor do they have ISO10262 Level II certificate)



Center Wiper for 35% Increase in Range (Option)



The center wiper is equipped on the demolition cabin. Bringing the wiping range of the roof wiper and center wiper closer together reduces blind spots and ensures a wide field of vision.



Reinforced Bucket (Option)

The shape of the bottom reinforced plate has been changed to a horizontal plate design. This allows for replacing only worn-out sections, lowering running costs.



Pre-cleaner (Optional)

Perfect for dusty working conditions.

REGZMA Cabin Interior for Best Comfort



Openable See-Through Hatch (Option)

*Clear version also available



One-Touch Open Front Window



One-Touch Open Door Lock



LED Room Lamp



Seat Heater

Standardly equipped seat heaters and mechanical suspensions ensure comfortable work with reduced fatigue throughout the year.

New Operation Lever

Operation switches are arranged to up and bottom. Round shape grip is easy to handle.



Proportional Control Lever (Option)

It can operate attachments such as crushers and breakers in the Attachment Mode of APC using slide switches on the top of dedicated grips instead of pedals.



Heat&Cold Insulation Box

It is capable of storing 6 drink bottles (500mL).



Pressurized Cabin

It prevents dust by enhancing the airtightness.

Full Auto A/C
Comfortable airflow with paper filter equipped.

Rear Stowage Space

It is capable of storing objects such as 2L size drink bottle.



Other Cabin Equipment

- Mechanical Suspension Seat
- Seat Belt
- Emergency Hammer
- Emergency Stop
- Luggage Space
- Helmet Hook
- USB Power Port (Option)
- 12V Power Port (Option)
- Fire Extinguisher (Option)
- Sun Visor (Option)
- Rain Visor (Option)
- See-Through Hatch (Option)
- Air Suspension Seat (Option)
- AM/FM Stereo Radio (Option)
- Bluetooth, USB Radio (Option)



New Foot Rest Arrangement

The foot rest has been relocated to optimum position. Replacement of the floor mat has become easier.



Drink Holder

Soft material is used for the drink holder. Various arrangements are available.



REGZMA 7-inch Wide LCD Touch Display



Safety

Standard Rear View Camera

For better vision and safety



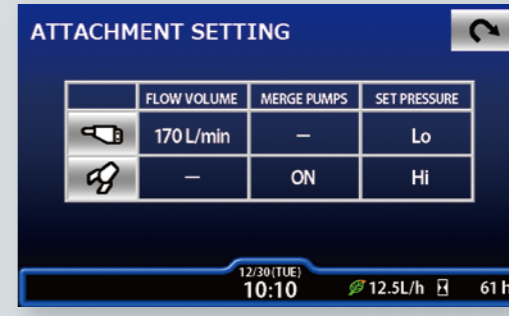
Dual Camera Display Available
(Optional Side-view Camera)

Operability Touch screen control is available for all operation.



Mode selection

Pull-down menu enables operator to confirm all mode on the display at once.



Attachment Settings

Flow and pressure for various attachments can be set on the touch display.

Rear 270° Surround View System (Option)

It's displayed in the middle of the APC for better safety. Dual display and triple display are also available.



Dual display



Triple display



Main Specifications

| | | | | | |
|----------------|---|------------|---------------|-------------|---------------|
| Model | HD823MR-8 | | HD823MRLC-8 | | |
| Specs | Standard | Demolition | Heavy Digging | LC Standard | LC Demolition |
| Operating Mass | 23,100kg | 23,900kg | | 24,000kg | 24,600kg |
| Bucket Volume | 0.45m ³ ~ 1.1m ³ (Standard Bucket 0.8m ³) | | | | |

Engine

| | | |
|--------------|---|--|
| Model | Yanmar 4TN107 Diesel Engine | |
| Rated Output | 120.7kW (164PS) / 2,000min ⁻¹ | |
| Max Torque | 788N·m (80.4kgf·m) / 1,500min ⁻¹ | |
| Emission | EU Stage V / EPA Final Tier4 | |

Main Dimensions

| | | | | |
|---------------------------|---------|---------|---------|---------|
| Length (during transport) | 8,860mm | | 9,000mm | 9,010mm |
| Height (during transport) | 3,070mm | 3,120mm | 3,070mm | 3,130mm |
| Width | 2,950mm | | 2,990mm | |
| Ground Clearance | *465mm | | | |
| Tail Swing Radius | 2,080mm | | | |
| Track Length | 4,170mm | | 4,460mm | |
| Track Width | 600mm | | | |

Travel and Swing

| | | | | |
|-----------------|----------------------------------|----------------------------------|----------------------------------|----------------------------------|
| Travel Speed | 5.7/3.8km/h | | | |
| Swing Speed | 14min ⁻¹ | | | |
| Gradeability | 70% | | | |
| Ground Pressure | 52kPa (0.53kgf/cm ²) | 53kPa (0.54kgf/cm ²) | 50kPa (0.51kgf/cm ²) | 51kPa (0.52kgf/cm ²) |

Digging Performance

| | | | | |
|----------------------|--|--|--|--|
| Bucket Digging Force | 150kN (15.3tonf) [159kN (16.2tonf) High Power] | | | |
| Arm Digging Force | 109kN (11.1tonf) [115kN (11.7tonf) High Power] | | | |

Hydraulics

| | | | | |
|----------------|---|--|--|--|
| Hydraulic Pump | Double Variable Volume Piston Pump + Gear Pump | | | |
| Swing Motor | Single Fixed Volume Piston Pump | | | |
| Travel Motor | Double Variable Volume Piston Pump | | | |
| Control Valve | 5+4 Sections Multiple Control Valves (1 free service port included) | | | |
| Set Pressure | 34.3MPa (350kgf/cm ²) [High Power: 36.3MPa (370kgf/cm ²)] | | | |

Tanks

| | | | | |
|---------------|-------------------------|--|--|--|
| Oil Reservoir | 274L (System) | | | |
| Fuel Tank | 325L | | | |
| DEF Tank | 55L (Replenishment 46L) | | | |

*Grouser height not included

◎Standard equipments ●Option —No setting

Safety Equipment

| | Standard | Demolition | Heavy Digging | LC Standard | LC Demolition |
|--|----------|------------|---------------|-------------|---------------|
| ISO 12117-2 ROPS Cabin (with ISO 10262 FOPS top guard LEVEL I) | ◎ | ◎ | ◎ | ◎ | ◎ |
| Safety Lock Lever | ◎ | ◎ | ◎ | ◎ | ◎ |
| Seat Belt | ◎ | ◎ | ◎ | ◎ | ◎ |
| Emergency Engine Stop Switch | ◎ | ◎ | ◎ | ◎ | ◎ |
| Emergency Hammer | ◎ | ◎ | ◎ | ◎ | ◎ |
| Rear-view Mirror (right side) | ◎ | ◎ | ◎ | ◎ | ◎ |
| Rear-view Mirror (left side) | ◎ | ◎ | ◎ | ◎ | ◎ |
| Rear-view Camera | ◎ | ◎ | ◎ | ◎ | ◎ |
| Side-view Camera | ● | ● | ● | ● | ● |
| Surround View System | ● | ● | ● | ● | ● |
| LED Working Light (slewing table right side, boom left side) | ◎ | ◎ | ◎ | ◎ | ◎ |
| Additional LED Light (above cabin left side/above cabin on both sides) | ● | ● | ● | ● | ● |
| Additional LED Light (boom right side) | ● | ● | ● | ● | ● |
| Boom/Arm Anti-Drift Valves | ◎ | ◎ | ◎ | ◎ | ◎ |
| Slewing Anti-counter Action | ◎ | ◎ | ◎ | ◎ | ◎ |
| Automatic Parking Brake (swing) | ◎ | ◎ | ◎ | ◎ | ◎ |
| Automatic Parking Brake (travel) | ◎ | ◎ | ◎ | ◎ | ◎ |
| Firewalls | ◎ | ◎ | ◎ | ◎ | ◎ |
| Falling Prevention Handrail | ◎ | ◎ | ◎ | ◎ | ◎ |
| Battery Disconnect Switch | ◎ | ◎ | ◎ | ◎ | ◎ |
| Caution Indication Signs | ◎ | ◎ | ◎ | ◎ | ◎ |
| Cabin Lower Guard (grid) | ● | ● | ● | ● | ● |
| Cabin Front Guard (vertical grid) | ● | ● | ● | ● | ● |
| Cabin Front Guard (grid) | ● | ● | ● | ● | ● |
| Cabin Head Guard (vertical grid) | ● | ● | ● | ● | ● |
| Cabin Side Steps (folding) | ● | ● | ● | ● | ● |
| Fire Extinguisher | ● | ● | ● | ● | ● |
| Additional Electronic Horn | ● | ● | ● | ● | ● |
| Travelling Alarm | ● | ● | ● | ● | ● |
| Swing Alarm Lamp | ● | ● | ● | ● | ● |
| Speaker (fixed mic/hand-held mic) | ● | ● | ● | ● | ● |

*Cabin front guard cannot be installed with rain visor at the same time

*Guard rails have not obtained the CE certificate, nor do they have ISO 10262 Level II certificate

Cabin/Interior

| | | | | | |
|---|---|---|---|---|---|
| 6 Points Viscous Damping Cabin Suspension | ◎ | ◎ | ◎ | ◎ | ◎ |
| Front Window with Open Assist | ◎ | ◎ | ◎ | ◎ | ◎ |
| 7 Inch Wide Touch Monitor | ◎ | ◎ | ◎ | ◎ | ◎ |
| Mechanical Suspension Seat | ◎ | ◎ | ◎ | ◎ | ◎ |
| Pressurized Auto A/C | ◎ | ◎ | ◎ | ◎ | ◎ |
| Defroster | ◎ | ◎ | ◎ | ◎ | ◎ |
| Large Capacity Warming & Cooling Insulation Box | ◎ | ◎ | ◎ | ◎ | ◎ |
| Intermittent Windshield Wiper | ◎ | ◎ | ◎ | ◎ | ◎ |
| LED Room Light | ◎ | ◎ | ◎ | ◎ | ◎ |
| Cup Holder (with object holder) | ◎ | ◎ | ◎ | ◎ | ◎ |
| 24V Accessory Socket | ◎ | ◎ | ◎ | ◎ | ◎ |
| Demolition cabin (with center wiper and roof wiper) | ● | ● | — | ● | ● |
| See-through Hatch (with sunshade) | ● | ● | ● | ● | ● |
| Sunshade | ● | ● | ● | ● | ● |
| Sun Visor | ● | ● | ● | ● | ● |
| Rain Visor | ● | ● | ● | ● | ● |
| Air Suspension Seat | ● | ● | ● | ● | ● |
| Proportional Lever | ● | ● | — | ● | ● |
| AM/FM Stereo Radio | ● | ● | ● | ● | ● |
| Bluetooth, USB Radio | ● | ● | ● | ● | ● |
| 12V Accessory Socket | ● | ● | ● | ● | ● |
| 2 Port USB Socket | ● | ● | ● | ● | ● |
| Seat Cover | ● | ● | ● | ● | ● |

*Rain visor cannot be installed with cabin front guard at the same time

*Demolition cabin have not obtained the CE certificate, nor do they have ISO 10262 Level II certificate

System

| | | | | | |
|-------------------------------|---|---|---|---|---|
| APC Modes (A, P and E) | ◎ | ◎ | ◎ | ◎ | ◎ |
| Attachment Mode | ◎ | ◎ | ◎ | ◎ | ◎ |
| Auto-slow, One touch slow | ◎ | ◎ | ◎ | ◎ | ◎ |
| Automatic Travel Transmission | ◎ | ◎ | ◎ | ◎ | ◎ |
| 2 Speed Modes for Travelling | ◎ | ◎ | ◎ | ◎ | ◎ |

Piping/Others

| | Standard | Demolition | Heavy Digging | LC Standard | LC Demolition |
|---|----------|------------|---------------|-------------|---------------|
| Attachment Service Port (1 section) | ◎ | ◎ | ◎ | ◎ | ◎ |
| High-performance Filter | ● | ◎ | ◎ | ● | ◎ |
| Additional Piping for Breaker/Crusher (manual switch) | ● | ● | — | ● | ● |
| Additional Piping for Breaker/Crusher (electrical switch) | ● | ◎ | — | ● | ◎ |
| Accumulator for Breaker | ● | ◎ | — | ● | ◎ |
| Boost Piping for Crusher | ● | ◎ | — | ● | ◎ |
| Additional Piping for Rotator | ● | ● | — | ● | ● |
| Lowering Control Device (Boom) | ● | ● | ● | ● | ● |
| Lowering Control Device (Arm) | ● | ● | ● | ● | ● |
| Multi Lever (4 positions) | ● | ● | ● | ● | ● |
| Selector Lever (2 positions) | ● | ● | ● | ● | ● |
| Air Cleaner Double Element | ◎ | ◎ | ◎ | ◎ | ◎ |
| Pre-Cleaner | ● | ● | ● | ● | ● |
| Additional Counterweight (+1,000kg) | ● | ● | — | ● | ● |
| Reinforced Under Cover for Slewing Table | ● | ◎ | ◎ | ● | ◎ |
| Fuel Pump | ● | ● | ● | ● | ● |
| Specification for Cold Climates | ● | ● | ● | ● | ● |
| Designated Color | ● | ● | ● | ● | ● |
| Tools | ◎ | ◎ | ◎ | ◎ | ◎ |

*Multi Lever and Selector Lever cannot be installed together.

Working Equipment

| | | | | | | |
|--------|-------------------------------------|---|---|---|---|---|
| Bucket | 0.45m ³ Bucket | ● | ● | ● | ● | ● |
| | 0.55m ³ Bucket | ● | ● | ● | ● | ● |
| | 0.8m ³ Bucket | ◎ | ◎ | ● | ◎ | ◎ |
| | 0.9m ³ Bucket | ● | ● | ● | ● | ● |
| | 1.0m ³ Bucket | ● | ● | ● | ● | ● |
| | 1.1m ³ Bucket | ● | ● | ● | ● | ● |
| | 0.8m ³ Reinforced Bucket | ● | ● | ◎ | ● | ◎ |
| | 0.9m ³ Reinforced Bucket | ● | ● | ● | ● | ● |
| Arm | Standard Arm (2.93m) | ◎ | ◎ | ◎ | ◎ | ◎ |
| | Long Arm (3.92m) | ● | — | — | ● | — |
| | Various Arm Reinforcements | ● | ◎ | ◎ | ● | ◎ |
| Boom | Standard Boom (5.63m) | ◎ | — | — | ◎ | — |
| | Reinforced Boom (5.63m) | ● | ◎ | ◎ | ● | ◎ |
| | Small Rotation Radius Bracket | ● | ● | — | ● | ● |
| Link | Standard Side Link | ◎ | — | — | ◎ | — |
| | Reinforced Side Link | ● | ◎ | ◎ | ● | ◎ |

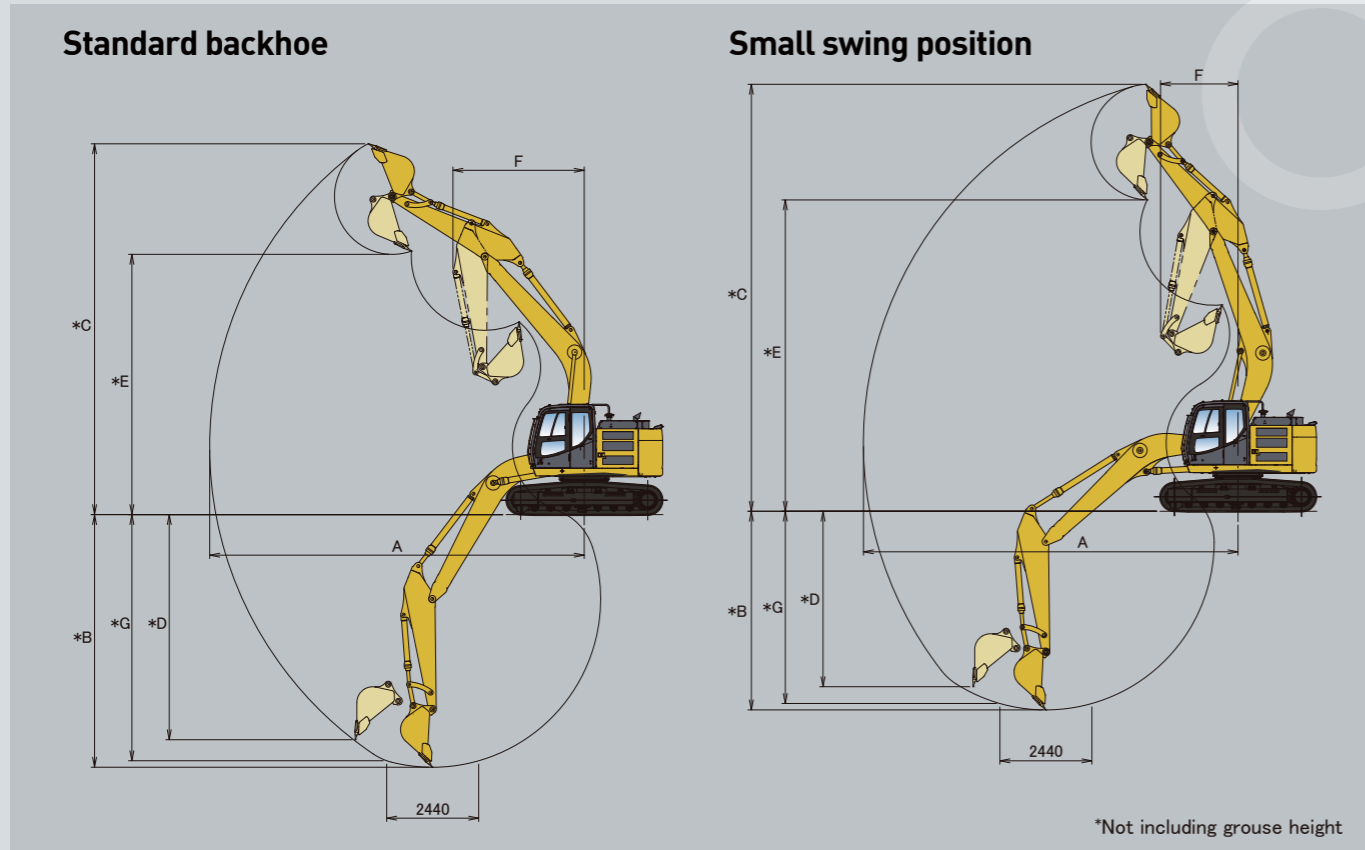
Arm Reinforcements A and B are:

A: Plate reinforcement, B: Plate and corner reinforcement.

Travel Equipment

| | | | | | | |
|------------------------------------|----------------------|---|---|---|---|---|
| Shoe | 600mm Triple Grouser | ◎ | ◎ | ◎ | ◎ | ◎ |
| | 700mm Triple Grouser | ● | ● | — | ● | ● |
| | 800mm Triple Grouser | ● | ● | — | ● | ● |
| | 900mm Triple Grouser | — | — | — | ● | ● |
| | 600mm Pad | ● | ● | ● | ● | ● |
| Track Guard | 800mm Pad | ● | ● | — | ● | ● |
| | 1 pc on Each Side | ◎ | — | — | ◎ | — |
| Traveling Motor cover (reinforced) | 3 pc on Each Side | ● | ◎ | ◎ | ● | ◎ |
| | Travel Frame Cover | ◎ | ◎ | ◎ | ◎ | ◎ |
| | | ● | ● | ● | ● | ● |

REGZMA Working Ranges



| Range | Arm | Standard boom | | Bracket on boom for small swing radius (option) | |
|--|-----|----------------------|------------------|---|------------------|
| | | Standard Arm (2.93m) | Long Arm (3.92m) | Standard Arm (2.93m) | Long Arm (3.92m) |
| A: Maximum Digging Radius | | 9,930 | 10,870 | 9,930 | 10,870 |
| * B: Maximum Digging Depth | | 6,700 [6,690] | 7,690 [7,680] | 5,270 [5,260] | 6,260 [6,250] |
| * C: Maximum Digging Height | | 9,830 [9,840] | 10,390 [10,400] | 11,320 [11,330] | 12,120 [12,130] |
| * D: Maximum Vertical Wall | | 5,960 [5,950] | 7,090 [7,080] | 4,650 [4,640] | 5,660 [5,650] |
| * E: Maximum Dump Height | | 6,900 [6,910] | 7,430 [7,440] | 8,250 [8,260] | 9,060 [9,080] |
| F: Minimum Swing Radius | | 3,480 | 3,380 | 2,050 | 2,310 |
| * G: Maximum Digging Depth at 2,440mm (8ft) floor length | | 6,520 [6,510] | 7,550 [7,540] | 5,090 [5,080] | 6,120 [6,110] |

Bucket

| Type of Bucket | Bucket | | | | | | Skeleton Bucket | |
|--------------------------------------|--------------------------|------|-----|-------|-------|-------|-----------------|-------|
| Bucket Capacity m ³ , ISO | 0.45 | 0.55 | 0.8 | 0.9 | 1.0 | 1.1 | — | |
| Bucket Width | Without Side Cutters, mm | 670 | 780 | 1,020 | 1,150 | 1,270 | 1,350 | 1,400 |
| | With Side Cutters, mm | 785 | 895 | 1,135 | 1,265 | 1,385 | — | — |
| Standard Boom + | Standard Arm (2.93m) | ● | ● | ● | ● | ▲ [●] | □ | ○ |
| | Long Arm (3.92m) | ● | ● | ▲ | × [▲] | × | × | × |

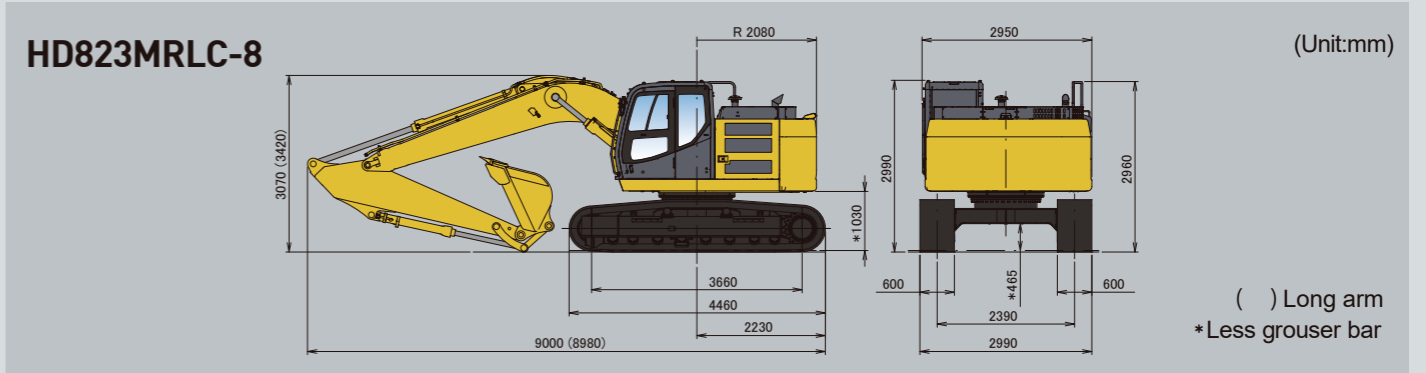
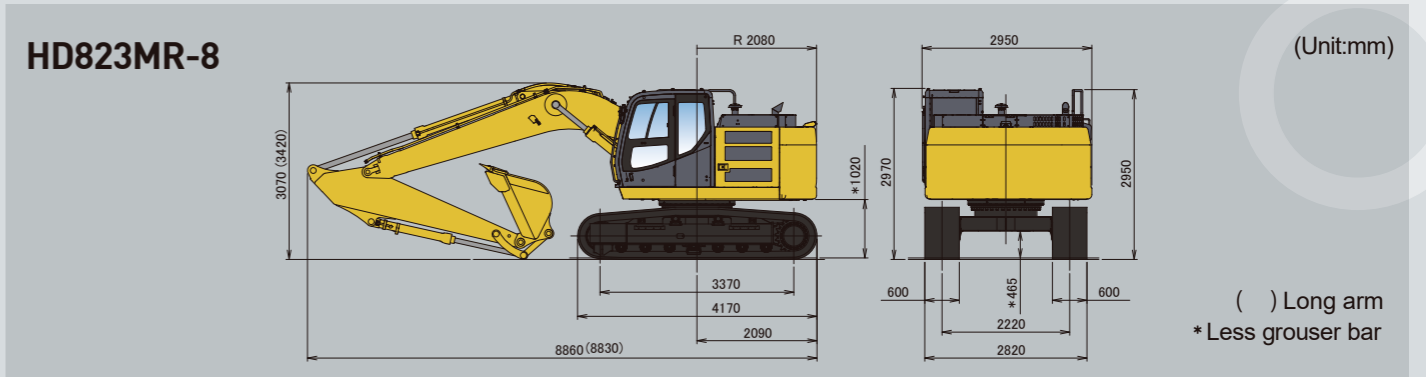
● : General purpose (used with material weight 1,800kg/m² or less) □ : Loading only (used with material weight 1,100kg/m² or less) [] is for HD823MRLC-8
 ▲ : Light work (used with material weight 1,600kg/m² or less) × : Unusable
 ■ : Orange colored area means standard.

Track Shoes

| Shoe Width (mm) | Triple Grouser Shoe | | | |
|---------------------------------|---------------------|---------------|---------------|-----------|
| | 600 | 700 | 800 | 900 |
| Distance between Both Ends (mm) | 2,950 [2,990] | 2,960 [3,090] | 3,020 [3,190] | — [3,290] |
| Ground Pressure (kPa) | 52 [50] | 45 [43] | 40 [38] | — [35] |

Ground pressure is calculated with a 5.63m standard boom, 2.93m standard arm, and 0.8m³(ISO) bucket. [] is for HD823MRLC-8
 ■ : Orange colored area means standard.

REGZMA Dimensions



REGZMA Rated Object Handling Capacities Table

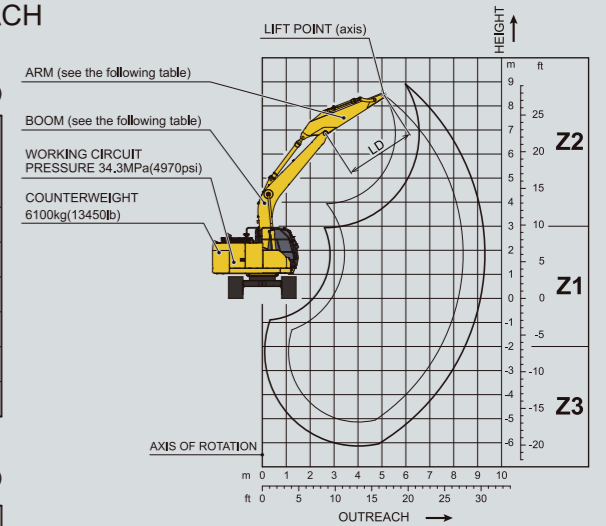
THESE LOADS ARE VALID FOR THE HEIGHT OF THE CONSIDERED ZONE (Z.) FOR THE INTENDED OUTREACH

HD823MR-8 STD LOWER

| BOOM length 5.63m(18'06") | ARM (LD) | OUTREACH IN m (ft in) - LOADS IN kg (lb) | | | | | | | MAX kg (lb) | MAX m (ft in) |
|------------------------------|--------------------|--|--------------|---------------|---------------|-------------|---------------|---------------|---------------|---------------|
| | | OUTREACH | 1.5m (4'11") | 3m (9'10") | 4.5m (14'09") | 6m (19'08") | 7.5m (24'07") | 9m (29'06") | | |
| | | SHOE WIDTH:600mm (24") | | | | | | | | |
| ARM (LD) | LD= 2.93m (9'07") | Z2 | 9370 (20660) | 5940 (13100) | 4640 (10230) | 3340 (7360) | 2840 (6260) | 8.31 (27'03") | | |
| | | Z1 | 4790 (10560) | 5320 (11730) | 6190 (13650) | 4160 (9170) | 3110 (6860) | 2730 (6020) | 8.39 (27'06") | |
| | | Z3 | 7480 (16490) | 11780 (25970) | 6200 (13670) | 4160 (9170) | | 3150 (6940) | 7.46 (24'06") | |
| | LD= 3.92m (12'10") | Z2 | | 5790 (12760) | 3380 (7450) | 2970 (6550) | 2480 (5470) | 2360 (5200) | 9.26 (30'04") | |
| | | Z1 | 3130 (6900) | 6830 (15060) | 6040 (13320) | 4030 (8880) | 2970 (6550) | 2330 (4980) | 9.33 (30'07") | |
| | | Z3 | 6110 (13470) | 10440 (23020) | 6020 (13270) | 4010 (8840) | 2970 (6550) | 2520 (5560) | 8.50 (27'11") | |

HD823MRLC-8 LC LOWER

| BOOM length 5.63m(18'06") | ARM (LD) | OUTREACH IN m (ft in) - LOADS IN kg (lb) | | | | | | | MAX kg (lb) | MAX m (ft in) |
|------------------------------|--------------------|--|--------------|---------------|---------------|--------------|---------------|---------------|---------------|---------------|
| | | OUTREACH | 1.5m (4'11") | 3m (9'10") | 4.5m (14'09") | 6m (19'08") | 7.5m (24'07") | 9m (29'06") | | |
| | | SHOE WIDTH:600mm(24") | | | | | | | | |
| ARM (LD) | LD= 2.93m (9'07") | Z2 | 9410 (20750) | 5950 (13120) | 4670 (10300) | 3760 (8290) | 3200 (7050) | 8.31 (27'03") | | |
| | | Z1 | 4830 (10650) | 5340 (11770) | 6200 (13650) | 4170 (9170) | 3120 (6860) | 2740 (6020) | 8.39 (27'06") | |
| | | Z3 | 7510 (16560) | 11900 (26230) | 6200 (13650) | 4170 (9170) | | 3150 (6940) | 7.45 (24'05") | |
| | LD= 3.92m (12'10") | Z2 | | 5810 (12810) | 3400 (7500) | 2990 (6590) | 2760 (6080) | 2860 (5860) | 9.26 (30'05") | |
| | | Z1 | 3150 (6940) | 6830 (15060) | 6300 (14070) | 4590 (10120) | 3380 (7450) | 2660 (5860) | 9.33 (30'07") | |
| | | Z3 | 6130 (13510) | 10460 (23060) | 6900 (15210) | 4570 (10080) | 3380 (7450) | 2870 (6330) | 8.50 (27'10") | |



WORKING CONDITIONS:

- with no tool (bucket, clamshell..)
- if object handling is performed with tool installed, the weight of the tool shall be deducted from the values of this table.
- with retracted bucket cylinder.
- on a compact horizontal level ground.
- in complete swing of the upperstructure.