

**KATO WORKS CO., LTD.**

<https://www.kato-works.co.jp>



**Headquarters**

9-37, Higashi-ohi 1-chome,  
Shinagawa-ku,  
Tokyo 140-0011 JAPAN  
Telephone:+81(0)3 3458-1111

**IBARAKI Plant**

5206 Motokurhashi, Gokamachi, Sashima-gun, Ibaraki JAPAN 306-0313

**GUNMA Plant**

823 Higashishinmachi, Ota-shi, Gunma JAPAN 373-0015

**BANDO Plant**

12 Midorinosato, Bando-shi, Ibaraki JAPAN 306-0658

**KATO TRAINING CENTER**

823 Higashishinmachi, Ota-shi, Gunma JAPAN 373-0015

**KATO WORKS (CHINA) LTD.**

No. 8 Huasheng South Road, Huayang Industrial Park, Zhoushi Town,  
Kunshan City, Jiangsu Province, CHINA

**KATO SCE (XIAMEN) CONSTRUCTION  
MACHINERY CO.,LTD.**

No. 39 Huanzhu Road, North Industrial Park, Jimei District, Xiamen City,  
Fujian Province, CHINA

**KATO EUROPE B.V.**

Naamrijk 1, 3454 PX De Meern THE NETHERLANDS

**KATO IMER S.p.A.**

Localita Cusona 53037, San Gimignano(SI), ITALY

EVOLUTION  
TOWARDS  
TRUE VALUE



Company Profile



# Over the course of 128 years, we have been pioneers in the construction machinery industry

Since our establishment in 1895, **KATO** has consistently achieved remarkable technological advancements. We have played a pivotal role as a technological pioneer and continue to hold a leading position in the industry.

**1895** Founded as a private enterprise, **KATO Iron Works**

**1923** Began manufacturing internal combustion locomotives and motorcars for rail use. Became designated factory of the Ministry of Railway.

**1935** Reorganized and established as **KATO WORKS CO., LTD.**

**1938** Began manufacture of engines, tractors, road rollers, cranes, etc.

**1952** Established as **Ishikawajima Koehring CO.** (joint venture of **Ishikawajima Heavy Industries Co., Ltd.** and **Koehring Company**)

**1953** Developed model 205 mechanical power excavators.

**1959** Began manufacture of fully hydraulic truck cranes and earth boring rigs

**1963** Began operation of Ibaraki plant

**1963** Began manufacture of street sweepers and paper drain machines

**1967** Began manufacture of hydraulic excavators

**1969** Launched NK-750 jumbo, the world's largest fully hydraulic truck crane.

**1970** Stock listed in 1st section of Tokyo Stock Exchange

**1975** Dissolved a capital tie-up with Koehring Company.

**1977** Changed the name to **Ishikawajima Construction Machinery Co., Ltd.**

**1978** Began operation of Gunma plant

**1978** IS-30G mini-excavators awarded Good Design Award

**1980** Began manufacture of rough terrain cranes

**1980** Began operation of Gunma plant

**1987** Launched KA-800 all terrain crane

**1989** Developed CCH500T the largest telescopic crawler cranes.

**1995** Completed New Headquarters building and celebrated 50th anniversary of the establishment

**1992** Developed new designed J series and UJ series with new concept. Easy to operate and robust structure. Start electrodeposition coating for all mini excavator cover.

**1993** Developed IC30 crawler carriers.

**1995** 100th anniversary of **KATO** founding

**1995** Launched NK-5000 (500ton) fully hydraulic truck crane.

**1998** Obtained ISO 9001 certification

**1998** Launched KA-900 all terrain crane

**2002** Established the joint venture IHIMER S.p.A. (currently **KATO IMER S.p.A.**) Began manufacture of mini-excavators to Europe.

**2004** Established the joint venture SCE (Xiamen) Construction Machinery Co., Ltd.

**2004** Kimiyasu Kato inaugurated as President

**2004** Changed the name to **IHI Construction Machinery Co., Ltd.**

**2006** Began operation of **KATO WORKS (CHINA) LTD.**

**2008** Launched REGZAM series hydraulic excavators

**2010** Developed the "E-jib" systems

**2010** Developed CCH2000-6 crawler cranes. Developed F801 forwarders.

**2014** Developed V4 series mini-excavators.

**2015** Developed IC75-2 electronic control crawler carriers.

**2016** Began operation of **KATO WORKS (THAILAND) CO., LTD.** Acquired IHI Construction Machinery Limited

**2016** Changed company name from **IHI IMER S.p.A.** to **KATO IMER S.p.A.**

**2018** Absorption-type merger of our subsidiary, **KATO HEAVY INDUSTRIES CONSTRUCTION MACHINERY CO., LTD.** (KATO HICOM CO., LTD.)

**2018** Established **KATO EUROPE B.V.** Opened the **KATO TRAINING CENTER**

**2019** Started operation of the **BANDO Plant** Changed company name from **ISHIKAWAJIMA SCE (Xiamen) Construction Machinery Co., Ltd.** to **KATO SCE (Xiamen) Construction Machinery Co., Ltd.** Closed the **YOKOHAMA Plant** (formerly **KATO HICOM CO., LTD.**) and moved production to the **GUNMA Plant**

**2023** Launched IC70R, full rotation crawler carrier



Internal combustion locomotive Tractor

■ [Company History]  
■ [Product History]

Our company has upheld the management philosophy of "contributing to society by providing excellent products" and has consistently engaged in developing, manufacturing, and selling material-handling machinery, construction machinery, and various industrial machinery, leading to our growth until today. It would not be an exaggeration to say that our history has been a continuous process of technological development in response to the needs of each era. Our history is long and dates back to the 1920s, where we began with locomotives and then challenged ourselves to develop and commercialize various types of machinery, such as truck cranes, hydraulic excavators, rough terrain cranes, all-terrain

cranes, and crawler carriers, through our pioneering spirit and unique technological innovations since our foundation.

Thanks to our years of unique development and refinement, we have received high praise from customers in Japan and around the world for our technology.

In recent years, as environmental considerations, including the issue of global warming, have been increasingly emphasized worldwide, we consider sustainability management as one of our key priorities. We actively pursue the development and commercialization of models aimed at carbon neutrality. We will continue to contribute to the development of society through our business and strive to achieve a sustainable society while fostering even greater empathy and trust from all our stakeholders and the world.



**Kimiyasu Kato**  
President and Representative Director

# KATO's sustainable management system based on our experience and track record over the century

## Approaching and catching the diverse needs of customers

**KATO** has built a reputation for excellence. Our strength lies in our ability to adapt to the changing demands of the times, our top-notch design capabilities, and our commitment to delivering high-quality products swiftly through a comprehensive production management system. We provide reliable support, ensuring a prompt and attentive response to customers worldwide. Additionally, we use a straightforward approach encompassing everything from creating and designing to making, selling, and maintaining, as we aim to build more trust and discover new possibilities.

### Design, Research and Development



#### Research, Development, and Design of KATO Products

We focus on delivering reliable and safe products that meet energy efficiency and environmental standards. We work on designing and developing safety systems for cranes and control systems for excavators, and we thoroughly test their in-field performance, durability, and functionality.



#### KATO-owned Testing Facilities

Our facilities include various testing courses for road vehicles and crawler machines, allowing us to conduct tests to ensure performance under challenging conditions.

### Manufacturing



#### End-to-end Process Management, from Procurement to Shipping

Based on production plans for each product model, we oversee every stage of the manufacturing process, from sourcing materials and manufacturing components to product assembly, inspection, and shipment. Additionally, we invest in improving our factory by constantly maintaining production lines and bringing in new technologies to foster continuing growth.



### Customer Support



#### Comprehensive After-Sales Support

Our worldwide dealerships offer product operation and maintenance guidance. We also actively gather information from the field and provide technical training to our service centers, establishing strong, trusted relationships with our customers as their closest technical partners.

### Sales and Marketing



#### Expanding Global Sales with Our Vast Product Lineup

We cater to various domestic clients, including civil engineering and construction companies, transport companies, rental firms, and local governments, tailoring our proposals to meet their unique needs. Internationally, we sell our products through a network of over 50 distributors worldwide, focusing on Asia, the Middle East, Oceania, Europe, and North America.



### Inspection, Quality Assurance



#### Assured Quality Through a Rigorous Inspection System

We have established a comprehensive quality assurance system using various inspection equipment and automotive testing facilities, from individual components to complete vehicles. For the critical structural components of our products, we use advanced testing tools and have set up the best inspection facilities for thorough quality checks.



# KATO's Exceptional Products Contribute to Various Places around the World

## Rough Terrain Cranes

Our rough terrain crane is a versatile workhorse, allowing a single operator to handle both traveling and crane operations easily. It's designed to maneuver through tight spots and handle rough terrain. Our lineup includes sizes from 2-axle vehicles to larger 4-axle ones, ensuring suitability for various construction sites and road conditions. These machines also have various safety features for operators' security.



## All Terrain Cranes

Our all-terrain crane features our original advanced technology on a sturdy carrier with a dependable large crane. Despite its size, it's extraordinarily agile, perfect for tight job sites and quick transitions between locations. The crane unit has proven reliability, and the carrier, crafted by KATO, offers top-notch performance and safety.



## Truck Cranes

Our truck crane offers the same driving capabilities as regular trucks, making it ideal for long-distance, high-speed job site commutes. The crane unit is built on a foundation of experience and reliability. The carrier combines the truck powertrain with the all-terrain crane's cabin, ensuring solid performance and safety.



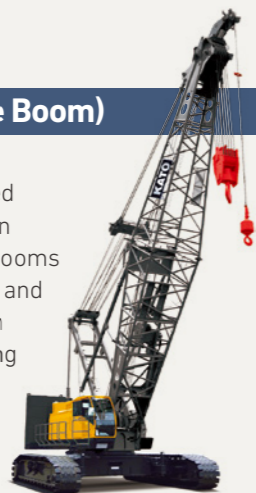
## Crawler Cranes (Telescopic Boom)

Crawler cranes with telescopic booms are versatile machines, excelling on uneven or soft ground. They can extend and retract the boom for tasks like foundation pile alignment. A robust winch suits them for lifting and civil engineering foundation work.



## Crawler Cranes (Lattice Boom)

Crawler cranes, with their tracked undercarriages, provide stability on uneven terrain. Their rigid lattice booms offer various boom length options, and their powerful winches make them suitable for multiple tasks, including construction and waterfront cargo handling. Tower cranes excel in lifting loads to great heights on building construction sites.



## City Range Cranes

The City range crane is a compact crane designed for efficient operation in confined spaces. It offers excellent drivability and maneuverability, along with the latest safety features. Moreover, it is equipped with a searcher hook, making it ideal for tasks in both warehouse and construction environments.



## Hydraulic Excavators



Our hydraulic excavators come in standard models for general civil engineering work and specialized versions for different industries, like demolition, heavy excavation, forestry, and short-reach tasks. They are known for fuel efficiency and efficient operation, making them versatile for various industries.

## Mini Excavators



Mini excavators offer maneuverability, mobility, and safety, making them suitable for plumbing, paving, and landscaping. They are popular in various markets, and we continually improve them to meet customer needs.

## Crawler Carriers

Crawler carriers excel where regular dump trucks struggle, especially on rough or soft terrain and during natural disaster recovery efforts. KATO's crawler carriers also incorporate electronic control systems for fuel efficiency and safe operation.



## Forwarder Machines

Forwarders are essential for efficient forestry operations, collecting cut timber from mountain forests. Moving, loading, and unloading of timber can all be done with only one machine. They play a vital role in forestry by significantly streamlining tasks.



## Compact Track Loaders

The track loader is a versatile machine that can be customized with various attachments to efficiently handle a diverse range of tasks. Their outstanding performance on different road conditions makes them valuable assets for multifaceted operations.



## Snow Sweepers

Snow sweepers ensure safe aircraft operations by swiftly clearing airport runways, taxiways, and aprons. They offer excellent maneuverability and efficiency.



## Earth Boring Rigs

Earth boring rigs create foundations for buildings, bridges, and viaducts. KATO offers machines designed for both angular drilling and complete casing drilling methods.



## Vacuum Trucks

Multipurpose vacuum trucks are equipped with a large vacuum pump to create negative pressure conditions in the hopper, creating a powerful suction force to collect materials. KATO's vacuum pump can handle not only sludge and wet materials but also dry powdery substances without the need for special filters. As a result, these trucks are versatile for various cleaning and transportation tasks.



## Street Sweepers

Road sweepers clean road surfaces, including roads, airports, and factories, to ensure safe operation in these areas. These machines are mounted on general-purpose trucks, allowing efficient cleaning and transport needs.



Our flagship factory for construction cranes

# IBARAKI Plant

Main products: Rough terrain cranes, all terrain cranes, street sweepers, and vacuum truck, etc.



## Utilizing detailed management and efficient, high-quality production systems

Location: 5206 Motokurihashi, Gokamachi, Sashima-gun, Ibaraki JAPAN  
 Facility Size: 150,556m<sup>2</sup> Floor Size: 52,311m<sup>2</sup>

As our leading plant specializing in construction cranes, the Ibaraki plant can produce various models through a streamlined layout. The layout achieves high productivity and has the flexibility to fit the various specifications of products.



Cutting-edge facilities and world-leading productivity

# GUNMA Plant

Main products: Hydraulic excavators, mini excavators, earth boring rigs, crawler carriers, forwarders, compact truck loaders, crawler cranes

## Our company's technology gathered on a vast site

Location: 823 Higashishinmachi, Ota-shi, Gunma JAPAN  
 Facility Size: 208,963.75m<sup>2</sup> Floor Size: 62,817.8m<sup>2</sup>  
 \*Excludes the Training Center

The Gunma plant not only produces **KATO** excavators but also has testing facilities for hydraulic excavators and crane vehicles. These testing facilities allow us to ensure the durability and reliability of our products.



Our third domestic plant to support our production

# BANDO Plant

Main products: Cargo handling machine parts, construction machine parts



State-of-the-art automated warehouse system and high-rise racks for efficiently organizing parts.

Location: 12 Midorinosato, Bando-shi, Ibaraki JAPAN  
 Facility Size: 66,000m<sup>2</sup> Floor Size: 13,900m<sup>2</sup>

This third domestic plant is built for future increases in production scales and smoother parts supply. Using cutting-edge technologies, this plant can swiftly meet the needs of the Ibaraki and Gunma plants and our valued customers.



Our training center for safety education and qualification acquisition for construction machinery

# GUNMA TRAINING CENTER



Specialized courses by our experienced staff and hands-on training sessions using our inhouse manufactured machinery.

Location: 823 Higashishinmachi, Ota-shi, Gunma JAPAN

The training center opened in October 2018 as a registered training institution of the Director of the Gunma Labor Bureau. As a comprehensive construction machinery manufacturer, we ensure that operators of construction machinery are trained by a team of expert instructors.

Courses:

1. License Course: Mobile Cranes, Cranes.
2. Skills Course : Small Mobile Cranes, Overhead Cranes, Construction Vehicle (EarthGrading and Disassembling), Slings, Forklifts, Crawler Carriers, AWP.
3. Special Course: Construction Vehicles, Full Harness Safety Belt, Arc Welding, Grinding Wheel, Dust.
4. Safety Course : For Mobile Cranes, Cranes, Forklifts, and Construction Vehicle Workers.



Hydraulic excavators plant wholly owned by **KATO WORKS CO., LTD.**

## **KATO WORKS (CHINA) LTD.**

Main products: Hydraulic excavators



Continuously engaging in improvement initiatives to produce high-quality products.

Location: No. 8 Huasheng South Road, Huayang Industrial Park, Zhoushi Town, Kunshan City, Jiangsu Province, CHINA  
Facility Size: 90,463m<sup>2</sup> Floor Size: 27,977m<sup>2</sup>

We conduct the manufacturing of hydraulic excavators in this factory. By incorporating the experience and expertise we have accumulated over time and thorough staff education, we are committed to producing high-quality products that rival those made in Japan.



Manufacture and supply small size machines to respond the needs of European market

## **KATO IMER S.p.A.**

Main products: Mini excavators, Skid-steer loaders, Mini dumpers, etc.



Location: Localita Cusona 53037, San Gimignano(SI), ITALY  
Facility Size: 36,500m<sup>2</sup> Floor Size: 7,670m<sup>2</sup>

Producing products that meet the needs of European customers, mainly compact models.

Utilizing Japanese technology to produce various models

## **KATO SCE (XIAMEN) CONSTRUCTION MACHINERY CO.,LTD.**

Main products: mini excavators, hydraulic excavators



Location: No. 39 Huanzhu Road, North Industrial Park, Jimei District, Xiamen City, Fujian Province, CHINA  
Facility Size: 28,700 m<sup>2</sup> Floor Size: 12,501 m<sup>2</sup>

We utilize Japanese technology and management systems to produce models that match the Chinese domestic market and global needs.

# Expanding the **KATO** brand to over 120 countries around the world

For over five decades and spanning over 120 countries worldwide, we have amassed a remarkable sales history, with tens of thousands of units sold. Guided by our unwavering commitment to "customer-first" principles, our global network of distributors collaborates tirelessly to advance the recognition of the **KATO** brand. Additionally, through initiatives like government development aid, including ODA, we play a pivotal role in supporting the growth of emerging nations. We are also dedicated to expanding our production facilities, having established our factories in China and Italy, enabling us to deliver products to our cherished customers swiftly.



## Company Profile

- ▶ **Company Name** **KATO WORKS CO., LTD.**
- ▶ **Founded** 1895
- ▶ **Established** 1935
- ▶ **Capital** JPY2,935,890,000
- ▶ **President and Representative Director** Kimiyasu Kato
- ▶ **Number of Employees** 1009 as of End MARCH, 2023
- ▶ **Summary of Business** Manufacture and sales of mobile cranes, construction and industrial equipment.
- ▶ **Major Products** Mobile Cranes: Rough terrain, all terrain, city range and truck cranes, Crawler cranes.

- Construction Equipment:** Hydraulic excavators, earth boring rigs and crawler carries.
- Industrial Equipment:** Powerful vacuum suction cleaners, vacuum suction high speed street sweepers and snow cleaners.

## ▶ Operation Locations

- Headquarters** 9-37, Higashi-ohi 1-chome, Shinagawa-ku, Tokyo 140-0011 JAPAN
- Telephone** +81 (0) 3 3458-1111
- Facsimile** +81 (0) 3 3458-1151
- Foreign Subsidiary Companies**
  - KATO WORKS (CHINA) LTD.**
  - KATO SCE (XIAMEN) CONSTRUCTION MACHINERY CO.,LTD.**
  - KATO EUROPE B.V.**
  - KATO IMER S.p.A.**
  - ICOMAC, INC.**